

The background of the slide is a dramatic image of a lightning bolt striking down from a dark, stormy sky. The lightning is bright white and jagged, contrasting sharply with the dark blue and black clouds. The bolt starts from the top right and strikes towards the bottom left.

Dos and Don'ts
Fabio Consani
Cloud Service Center

Coffee Lecture
26. October 2022

Fabio Consani

Head of ID-CCR - Portfoliomanagement

IT Shop

Software and licenses,
other IT services

IT Service Architecture

IT Dashboard

IT Lehlabor

IT Apprentices
Young'n'Rising

IT Service Catalogue

Service management
office

Dynamics CRM

Contract management,
Project portfolio

Cloud Service Center (CSC)

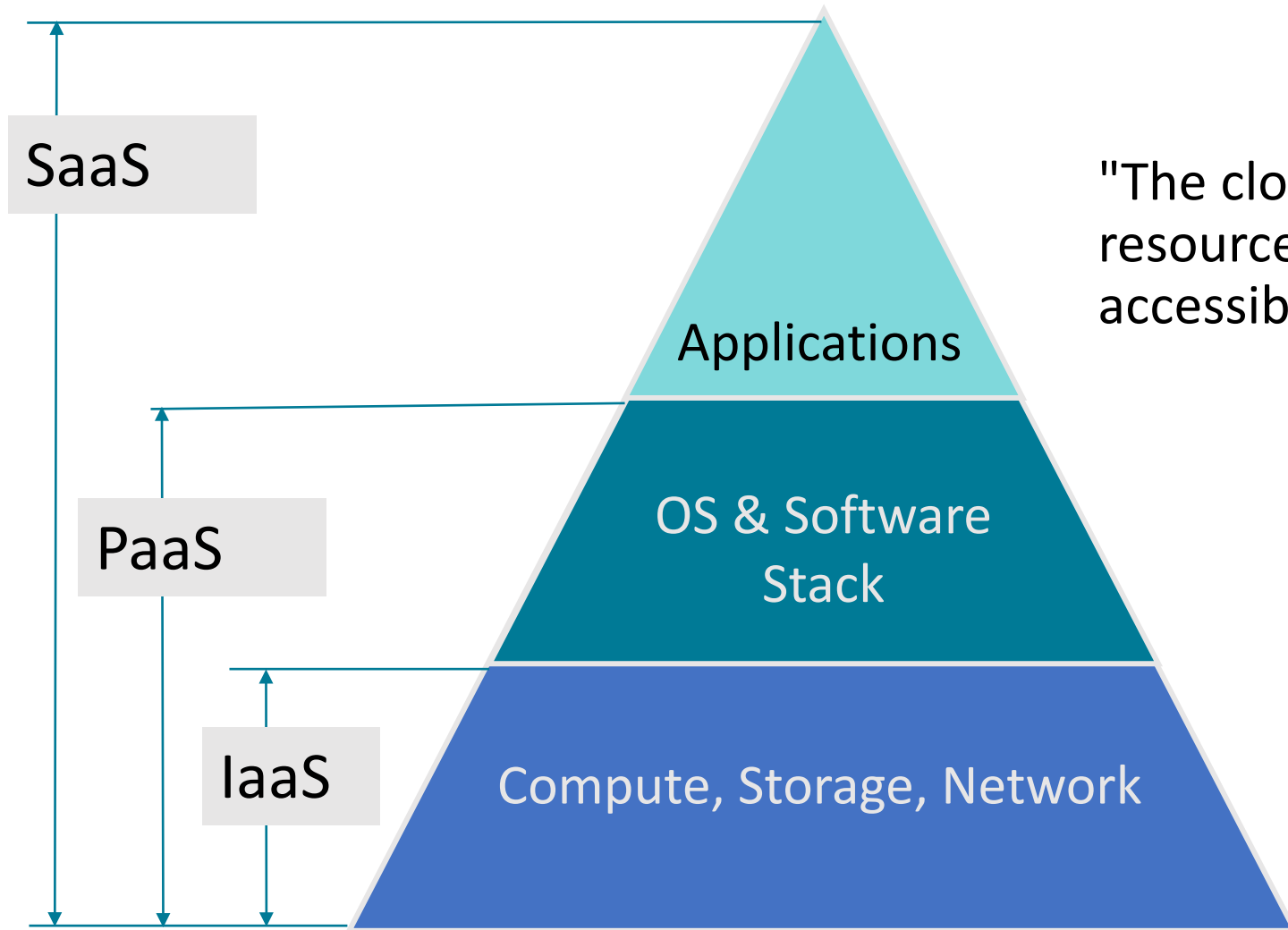
M365, Adobe, Zoom,
Google, Azure, etc.

Agenda

- Cloud – just another delivery model
- Impacts – different models – different risks
- SaaS – mind your identity and information
- PaaS – mind your data
- IaaS – control your budget
- How our Cloud Service Center (CSC) can help



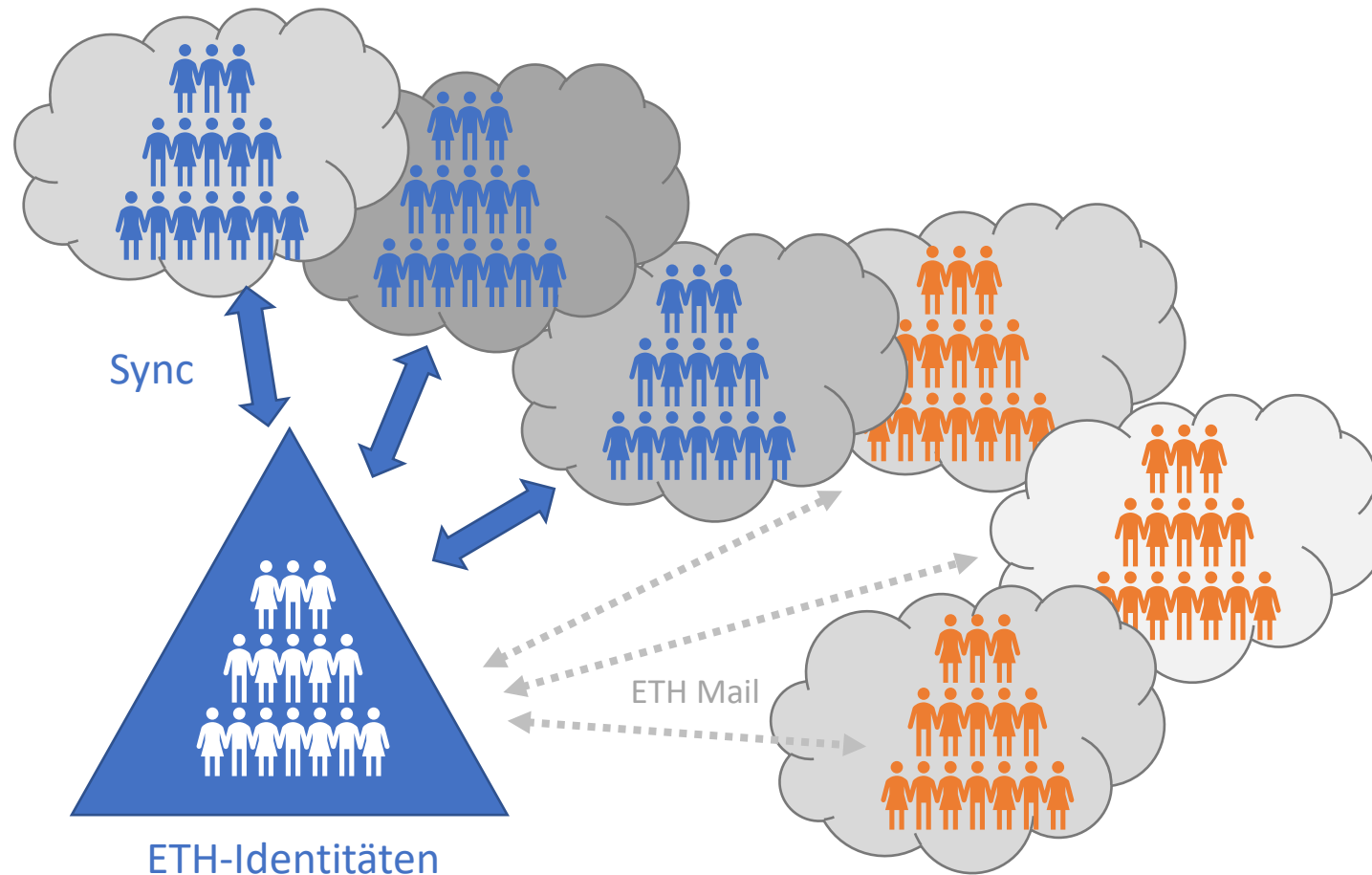
Cloud – just another delivery model...



"The cloud" refers to flexible on-demand IT resources and applications which are accessible over the internet.

...based
on data centers
not controlled by ETH!

Mind your Identity



Managed ETH Identities (IT Shop, IAM-Synchronization)

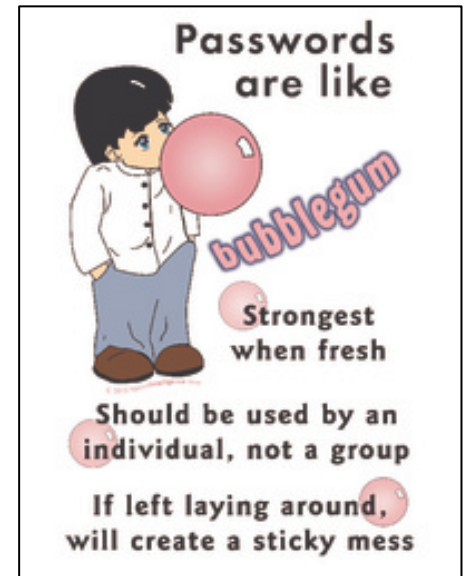
- Adobe
- Microsoft
- Google
- Zoom

Non-managed Identities (incl. Shadow IT)

- Dropbox, Slack, Amazon (AWS), Doodle, Apple,

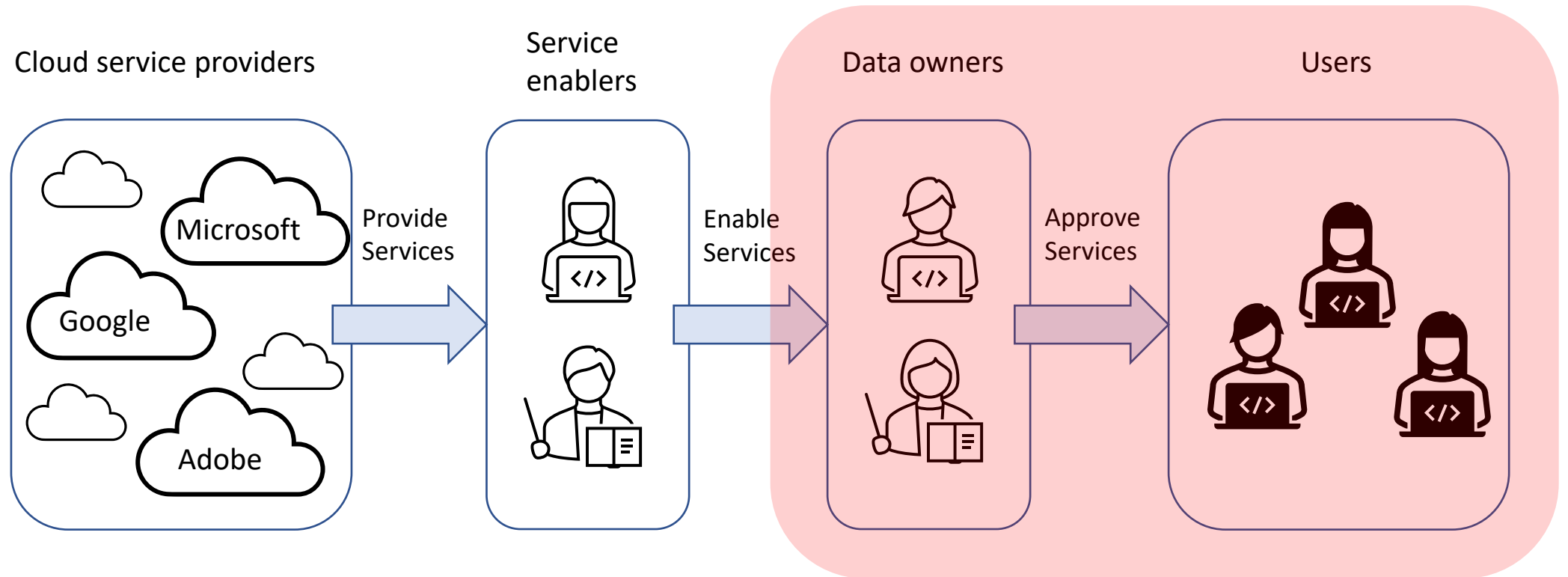
Mind your Identity and Information

- Use and manage MFA (Multi Factor Authenticaiton)
- Monitor usage of identity (somone else may use it)
 - Change passwords
 - Don't use shared accounts
- Use different passwords for different services (use password managers)
- Don't expose personal data ...
 - ... or inappropriate comments and opinions 😊
- In Clouds, everything is logged – and the Internet never forgets



nativeintelligence.com

Mind your data



Mind your data

- Keep a copy on-site whenever possible (no backups if offline)
 - Use Synchronization (Onedrive – but also Polybox)
 - Copy data to a device with backup
- Classify your data – no strictly confidential information! (Passwords)
- Assess the intended use for the intended cloud
- Use provided tools to secure your environment
- Mind the gaps (Addons, Extensions, Antivirus ...)
- In doubt – get help (CSC ;-))

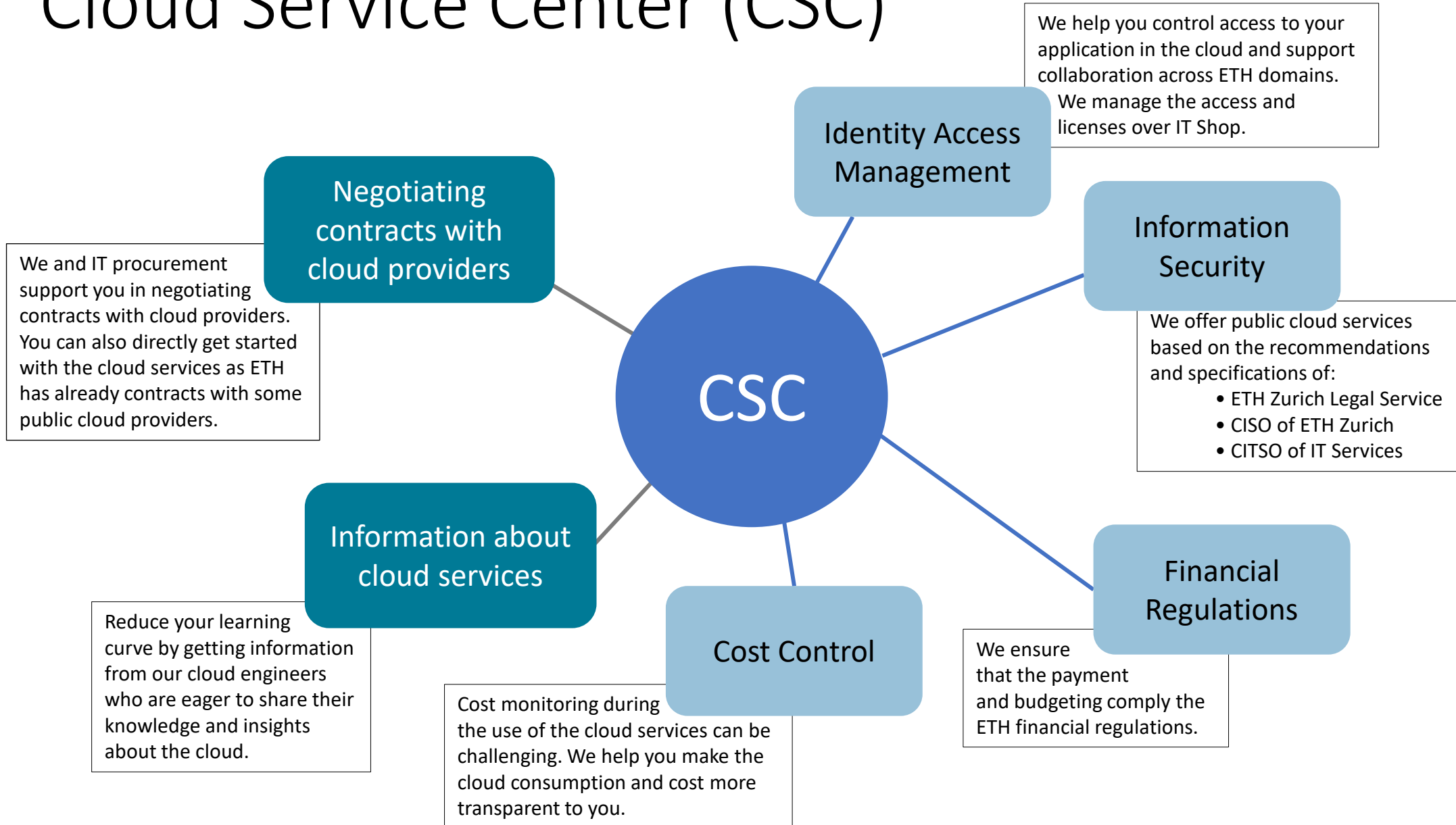
Infrastructure as a Service (Pay per use!)



Infrastructure as a Service (Pay per use!)

- Check the location of the used components (Data compliance)
- Control and manage access (Networking skills needed!)
- Unallocate unused and reduce underused resources (Cost)
- Plan with budget, implement control (Financial rules ETH)
- Automate build, automate deallocation, automate access
 - Use infrastructure as code (Terraform, ARM ...)
 - Think about CI/CD (Continuous Integration/Deployment)
- Enjoy your datacenter at a finger tip 😊

Cloud Service Center (CSC)



Documents

- Cloud Products @ central IT (ETH)
<https://unlimited.ethz.ch/display/itwdb/Cloud+Produkte>
- Assessments for the usage of external cloud services at ETH Zurich
<https://ethz.ch/staffnet/en/service/information-security/usage-external-cloud-services.html>
- List of released external cloud services
<https://ethz.ch/staffnet/en/service/information-security/usage-external-cloud-services/list-external-cloud.html>
- Legal
<https://rechtssammlung.sp.ethz.ch/Dokumente/203.23en.pdf>
<https://rechtssammlung.sp.ethz.ch/Dokumente/203.25en.pdf>

Fragen? (next coffee lecture 2.11. 2022)



Fabio Consani

Team lead



Roger Schlumpf

Software developer



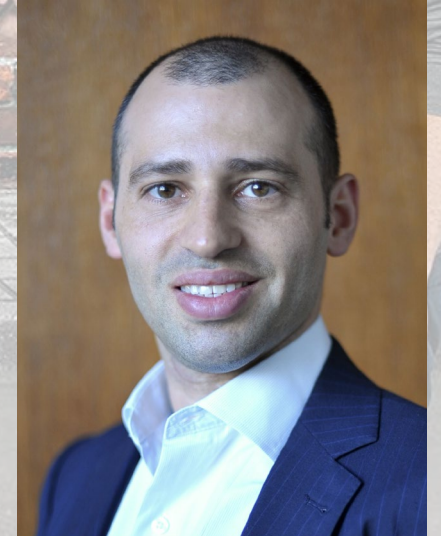
Apon Dunkl

Cloud engineer



**Jarunan
Panyasantisuk**

Scientific cloud specialist



**Aires
Carreira e Marques**

Cloud engineer