



Coffee Lectures

What do I have to consider when entering research data into the Research Collection

Andreas la Roi

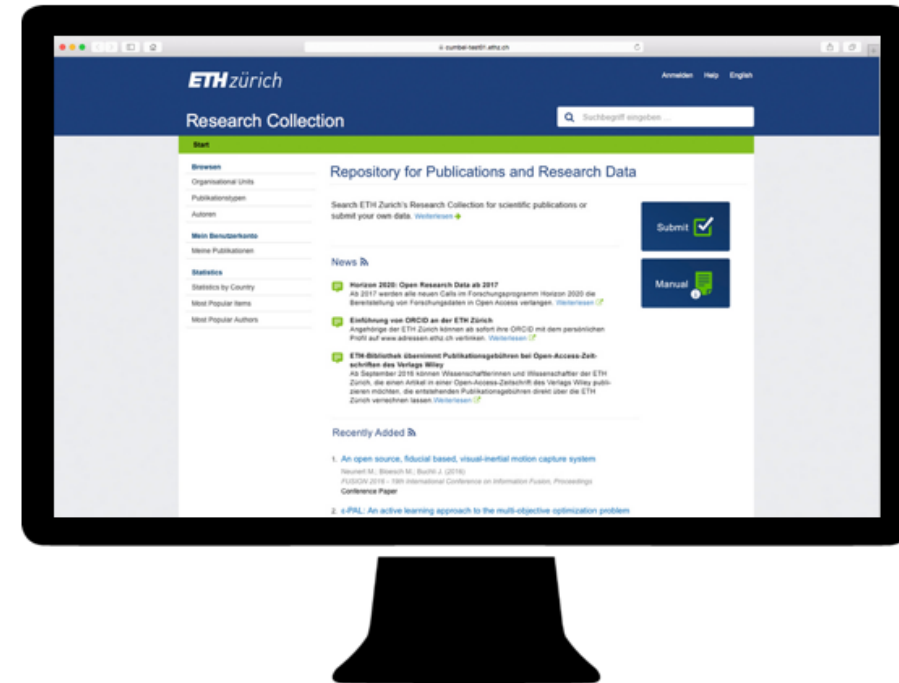
30 June 2021, Webinar on Zoom

Topics:

- How to prepare your files for the upload in the Research Collection
- How to choose file formats for publishing your research data

ETH Research Collection – www.research-collection.ethz.ch

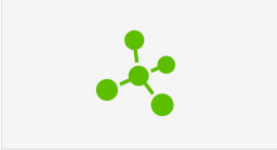
- One-stop-shop for depositing research output
 - Publications, research data
 - Web upload, DOI-reservation and registration, ORCID, export to OpenAire...
 - Long-term preservation in ETH Data Archive
- Aligned with FAIR principles according to SNSF guidelines




Research Collection for research data

- Publish, share or archive research data
- As supplementary material or stand-alone publication
- All file formats allowed, recommendations for suitable formats provided
- Max. file size: 10 GB (50GB per entry)
 - Contact us for larger datasets
- Free service for ETH members

LevelDynamics_Scilab/Xcos_v541_sources.7z



Open access 

Produzent(in)
Glattfelder, Adolf Hermann

Datum
2017-08-09

Typ
Model

Download
[LevelDynamics_ScilabXcos_v541_sources.7z \(Unknown, 25.32Mb\)](#) ↓

Rechte / Lizenz
[Creative Commons Attribution-ShareAlike 4.0 International](#) ↗

Abstract
Source files of models used in ' Free Surface Water Flow - Modeling, Simulation and Control ' developed in Scilab/Xcos v. 5.4.1

Persistenter Link
<https://doi.org/10.3929/ethz-b-000175543>

Beteiligte
Kontaktperson: Glattfelder, Adolf Hermann

Verlag
ETH Zurich

Software
Scilab/Xcos

Organisationseinheit
02650 - Institut für Automatik (IfA) / Automatic Control Laboratory (IfA)

Zugehörige Publikationen und Daten
Is supplement to: <https://doi.org/10.3929/ethz-b-000175527> ↗

Anmerkungen
7-zip 16.04 (64 bit) container with zero compression

Document your data

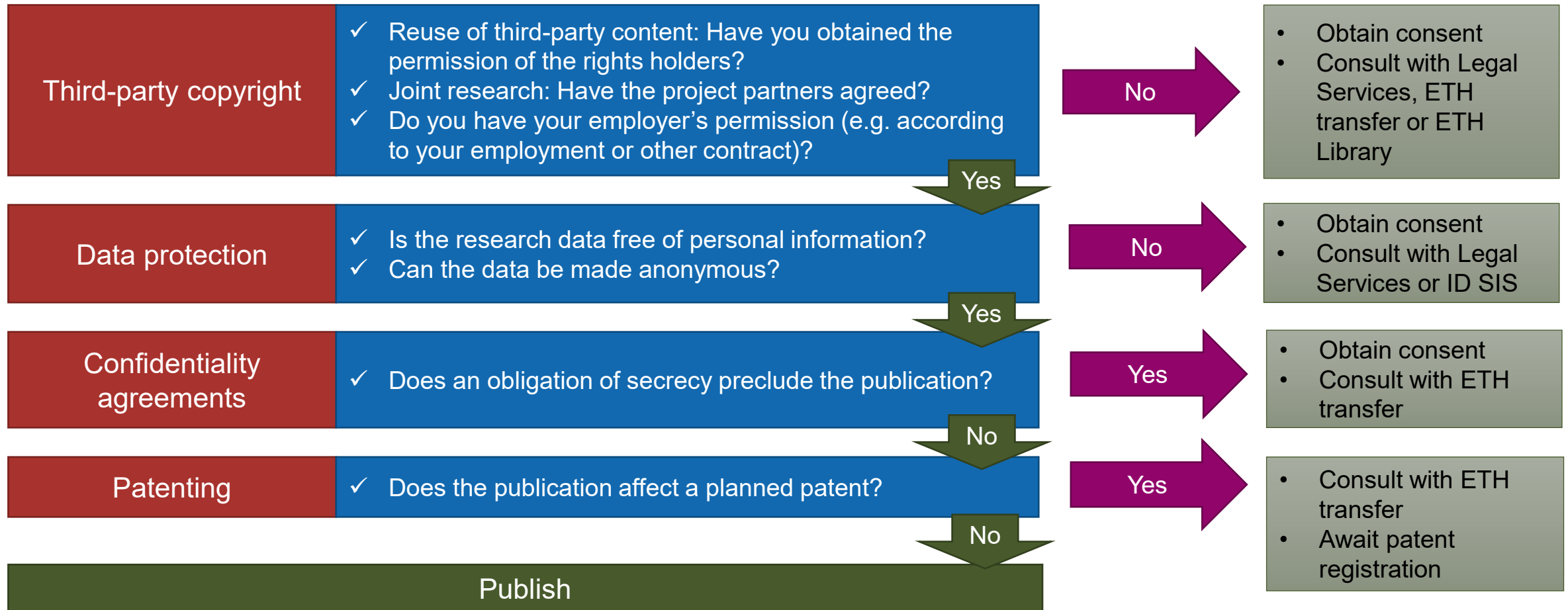
- Include a README
- Use informative file and folder names
- Include metadata

- Link it to an article or other publication

Related publications and datasets

Is supplement to: <http://hdl.handle.net/20.500.11850/379528> 

Legal aspects: what to clarify before publishing your data



Choose a licence

License Type: *

In Copyright - Non-Commercial Use Permitted

In Copyright - Non-Commercial Use Permitted

Licenses for Publications and Research Data

Creative Commons Attribution 4.0 International

Creative Commons Attribution-ShareAlike 4.0 International

Creative Commons Attribution-NonCommercial 4.0 International

Creative Commons Attribution-NoDerivatives 4.0 International

Creative Commons Attribution-NonCommercial-ShareAlike 4.0 International

Creative Commons Attribution-NonCommercial-NoDerivatives 4.0 International

Licenses for Software

Creative Commons Licences

What are Creative Commons Licences?

- CC licences allow authors / data producers to define **what types of reuse are permitted** for their works
- <https://creativecommons.org/>

Why should I apply a Creative Commons licence to my work?

- Because works published **without CC licence** can only be reused
 - with explicit **permission** from the copyright holder
 - or based on an **exemption defined in copyright law**, for example in Switzerland
 - for personal use
 - for text and data mining
 - for quotation in scientific works → c.f. [The right of quotation](#)
- Whereas works published **with CC licence** can be reused **as specified in the licence**

Edit your data for publication

- Remove temporary and backup files
- Removing duplicate files
- Rename files and folders where helpful
- Remove third party files and software for which you don't have permission
- Check for hardcoded file paths, symbolic links, references
- Don't include your manuscript
- Spell check your text files

- Good folder structure and regular cleanup should ideally already be part of the data management process

General recommendations for file formats

- Domain specific
- Open standards
- Avoid proprietary, undocumented filetypes

Formats for long term preservation

- Data in the Research Collection is deposited in the ETH Data Archive
- For long term preservation only recommended formats should be used
- Other formats should be converted into recommended formats
 - <https://documentation.library.ethz.ch/display/RC/File+formats+for+archiving>
- When non-recommended formats are used, long term readability cannot be guaranteed

Packaging your files for the upload

- Single files can be uploaded directly
- Larger collections in folder structures can be packaged in a container format
- Use standard containers
 - Zip or TAR-Files
 - Preferably uncompressed
 - No encryption/passwords

Take away: What to consider before and during the publication of your data

- Think about which data should be published
- Check for legal and ethical compliance
- Edit your data: Select well supported formats, remove unnecessary files
- Link the data to your publications and cite it's DOI



Thanks for your attention!

Next Coffee Lecture:

Coffee Lectures will be back on November 3,
2021! Wednesdays 3.15 p.m.

Watch: www.library.ethz.ch/coffee-lectures for program details!

Andreas la Roi
andreas.laroi@library.ethz.ch

ETH Zürich
HG H31.5
Rämistrasse 101
8092 Zürich

www.library.ethz.ch/coffee-lectures