



Coffee Lectures

How the RDM Guidelines at ETH support your daily work

Dr. Julian Dederke
21 February 2024, Webinar via Zoom

Learning Goals

- Get an overview of the Guidelines for Research Data Management at ETH Zurich.
- Learn how the RDM Guidelines facilitate structured RDM and endorse discipline-specific approaches.

FAIR Research Data Management at every step of the data lifecycle



The life cycle of research data

Rules and Regulations @ ETH Zurich

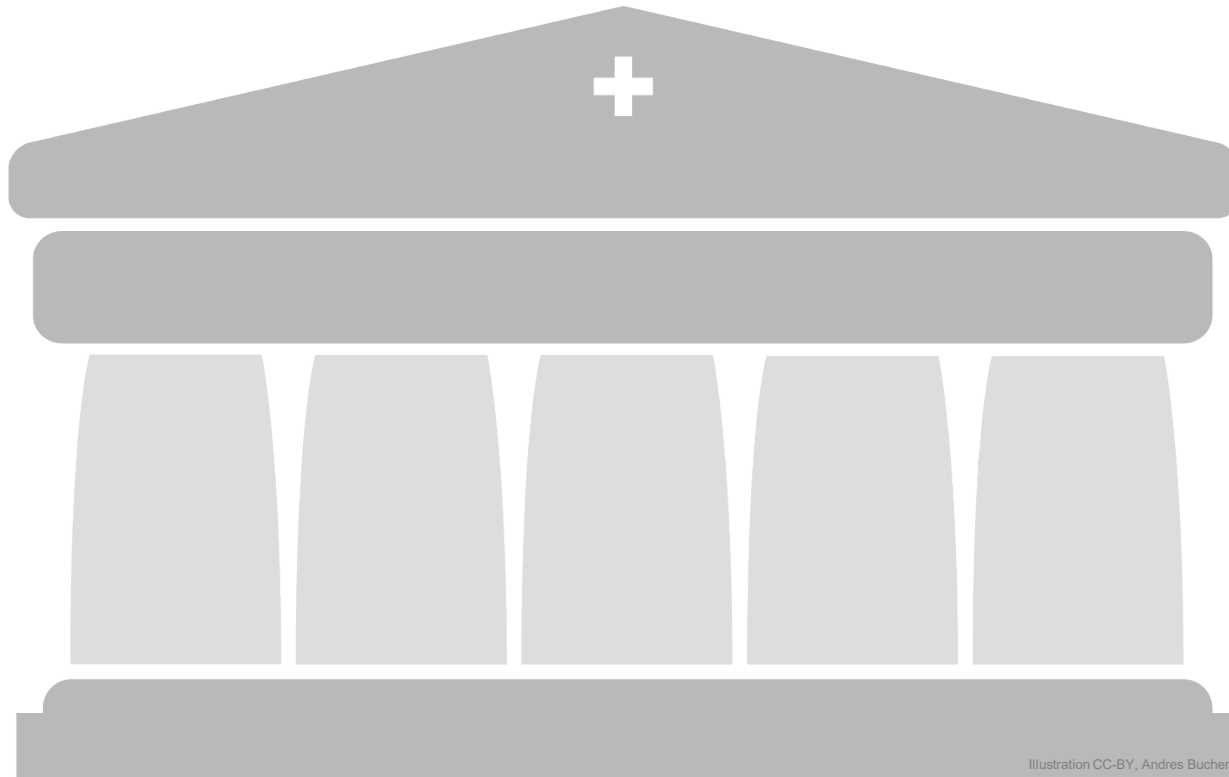


Illustration CC-BY, Andres Bucher

ETH Guidelines for Research Integrity

<https://rechtssammlung.sp.ethz.ch/Dokumente/414en.pdf>

ETH RDM Guidelines

<https://rechtssammlung.sp.ethz.ch/Dokumente/414.2en.pdf>

Since 2022

Other relevant guidelines:

Compliance Guide

Website (incl. link to compliance e-learning modules):

<https://ethz.ch/staffnet/en/finance-and-controlling/compliance.html>

ETH Open Access Policy

<https://rechtssammlung.sp.ethz.ch/Dokumente/134en.pdf>

ETH IT Legal Documents

<https://www.ethz.ch/services/en/it-services/documents.html>

Major RDM requirements at ETH Zurich



ETH Zurich researchers are expected to **include RDM in the planning of their activities**¹



A **DMP** is expected for every research project at ETH Zurich with clear temporal boundaries.¹



Research data **must be published in a FAIR repository**, generally at the time of publication of results.¹



All publications of research results **must contain a Data Availability Statement**.¹



Research data must be **retained generally for at least 10 years (minimum storage period)**¹



Project members **shall determine as early as possible how data is shared externally and how data may be used by persons leaving the project team**.² (legal department offers [templates](#))

¹Guidelines for Research Data Management at ETH Zurich (RDM Guidelines), 1 July 2022, <https://rechtssammlung.sp.ethz.ch/Dokumente/414.2en.pdf> (own emphasis in bold)

²ETH Zurich Guidelines on scientific integrity (Integrity Guidelines), 1 January 2022, <https://rechtssammlung.sp.ethz.ch/Dokumente/414en.pdf> (own emphasis in bold)

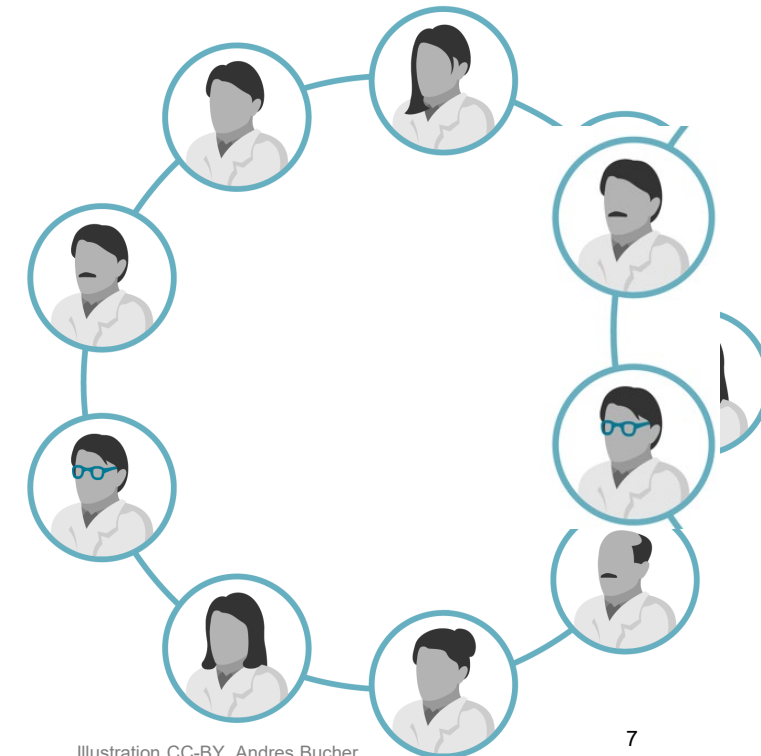
What can the RDM Guidelines do for you?

1. Knowing and applying the RDMGs enables us to approach the international **gold standard for research data (management): FAIR**
 - Planning of FAIR data management for [processing](#), [publication](#) and [preservation](#) phase of the data life cycle
 - Alignment with national and international funder requirements (e.g. [SNSF](#), [Horizon Europe](#))



2. RDMGs encourage us to **think RDM along the lines of scientific communities:**

- Use the latitude that the RDMGs provide with reference to “community standards” / [disciplinary standards](#)
- If there are no community standards in your research field yet (or you do not know about them), connect to fellow researchers at your institution to find out about them or to develop such standards together.



What can the RDM Guidelines do for you?

1. Knowing and applying the RDMGs enables us to approach the international **gold standard for research data (management): FAIR**
2. RDMGs encourage us to **think RDM along the lines of scientific communities**
3. RDMGs list service providers at ETH Zurich: ETH Library, Scientific IT Services, etc: **Reach out to get support and advice** -

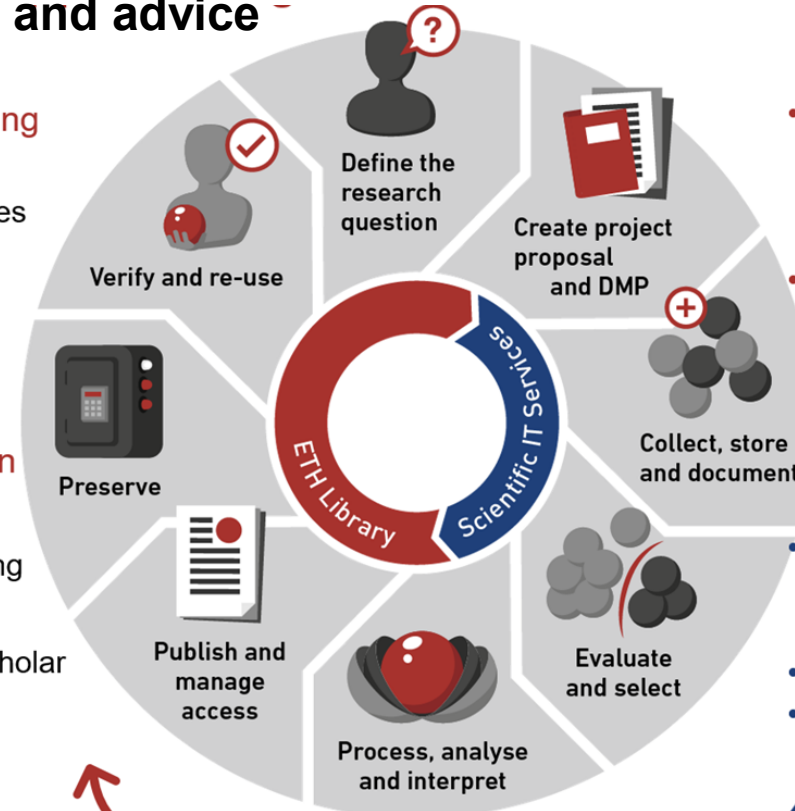
- **Preservation and Archiving Services**

- ETH University Archives
- ETH Web Archives
- Preservation planning
- Metadata preparation

- **ETH Research Collection**

- **Publication services**

- Open access publishing
- DOI registration
- Indexing in Google Scholar



- **Reference management software: licences and courses**

- **DMP guidance, templates, and review:**

- DMP Guidelines
- DMP Instructions

- **Active data management services (storage, wikis, openBIS etc.)**

- High-performance computing
- Research with strictly confidential data

<https://library.ethz.ch>

<https://sis.id.ethz.ch/>

What can the RDM Guidelines do for you?

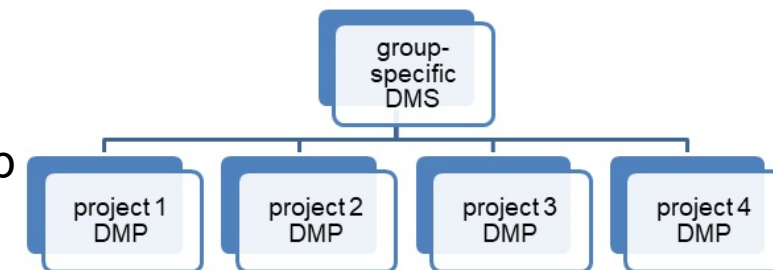
1. Knowing and applying the RDMGs enables us to approach the international **gold standard for research data (management): FAIR**
2. RDMGs encourage us to **think RDM along the lines of scientific communities**
3. RDMGs list service providers at ETH Zurich: ETH Library, Scientific IT Services, etc: **Reach out to get support and advice**
4. RDMGs enable us to put into practice **Open Science approaches**:
"as open as possible, as closed as necessary"
 - [Open Research Data: Position of the ETH Domain](#), [Swiss National Open Research Data Strategy](#)
 - valid reasons for not sharing research data and scientific code are acknowledged



Source: <https://unesdoc.unesco.org/ark:/48223/pf0000373209.locale=en>

What can the RDM Guidelines do for you?

1. Knowing and applying the RDMGs enables us to approach the international **gold standard for research data (management): FAIR**
2. RDMGs encourage us to **think RDM along the lines of scientific communities**
3. RDMGs list service providers at ETH Zurich: ETH Library, Scientific IT Services, etc: **Reach out to get support and advice**
4. RDMGs enable us to put into practice **Open Science approaches**:
"as open as possible, as closed as necessary"
 - Open Research Data: Position of the ETH Domain, Swiss National Open Research Data Strategy
 - valid reasons for not sharing research data and scientific code
5. RDMGs **invite** departments, institutes, labs, groups and non-departmental units **to establish RDM best practices**
 - guidance for a Data Management Strategy (DMS) on research group level or beyond: <https://unlimited.ethz.ch/x/dSiSCw>



What RDM helps you with...



Services and further training

Contact & Support

Dr. Julian Dederke
Research Data Management
Consultant

julian.dederke@library.ethz.ch

ETH Library
data-management@library.ethz.ch

Coffee Lectures
www.library.ethz.ch/coffee-lectures

GUIDES

FAQ

SUPPORT

What we offer:

- (customised) **trainings** on research data management
- **consultation** on data management planning, data publishing, data archiving (check www.library.ethz.ch)
- **support material:** https://unlimited.ethz.ch/x/_SeSCw



Thanks for your attention!

Next Coffee Lecture:

Research data during the peer review process:
Possibilities in the Research Collection

28 February 2024, Webinar via Zoom

www.library.ethz.ch/coffee-lectures