



innovative • entrepreneurial • global

www.utm.my

Philosophy

The divine law of Allah is the foundation for science and technology. Universiti Teknologi Malaysia strives with total and unified effort to develop excellence in science and technology for universal peace and prosperity, in accordance with His Will.

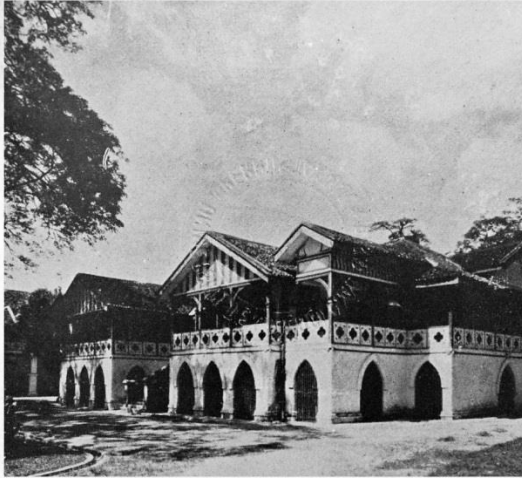
Vision

To be recognised as a world-class centre of academic and technological excellence.

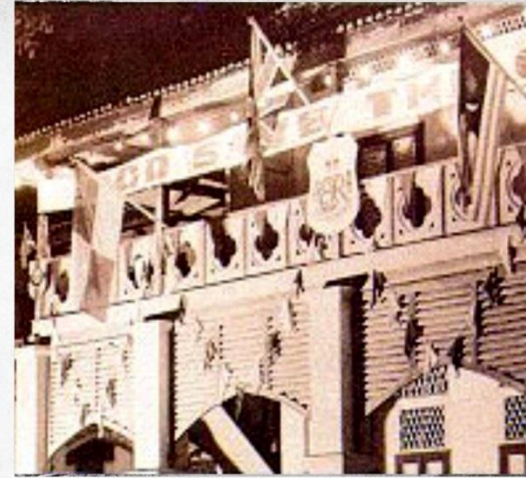
Mission

To be a leader in the development of human capital and innovative technologies that will contribute to the nation's wealth creation.

Tracing the Seeds of Growth



Treacher Technical School, KL (1904)



Technical College, KL (1946)



National Institute of Technology, KL (1972)



Universiti Teknologi Malaysia (1975)

UTM Campuses



UTM Johor Bahru Campus

(1,148 hectares)



UTM Kuala Lumpur Campus

(35 hectares)

Science & Technology

- ▶ Electrical Engineering
- ▶ Civil Engineering
- ▶ Chemical Engineering
- ▶ Mechanical Engineering
- ▶ Petroleum Engineering & Renewable Energy Engineering
- ▶ Bioscience & Medical Engineering
- ▶ Computing
- ▶ Science
- ▶ Geoinformation & Real Estate
- ▶ Advanced Informatics School
- ▶ Razak School of Engineering and Advanced Technology
- ▶ Malaysia Japan International Institute of Technology

UTM Faculties & Schools



Non Science & Technology

- ▶ Built Environment
- ▶ Management
- ▶ Education
- ▶ Islamic Civilization
- ▶ Language Academy
- ▶ International Business School
- ▶ Perdana School of Science, Technology & Innovation Policies

Five New Research Alliances

New Research Alliances

- 1** Frontier Materials
- 2** Health and Wellness
- 3** Smart Digital Community
- 4** Resource Sustainability
- 5** Innovative Engineering

Six New Institutes (Super CoE)

New Institutes (Super CoE)

1 Research Institute for Sustainable Environment (RISE)

2 Institute for Vehicle Systems and Engineering (IVeSE)

3 Ibnu Sina Institute for Scientific and Industrial Research (IBNU SINA ISIR)

4 Institute for Smart Infrastructures and Innovative Construction (ISIIC)

5 Institute of Human Centered Engineering (IHCE)

6 Institute of Future Energy (IFE)

Research & Innovation Streamlining

Niche Area Consolidation

10 Research Alliances (RA) merged to 5 RAs to represent 5 Niche Areas

Strengthening Research Ecosystem

Research Empowerment at Faculty level

CoE Streamlining

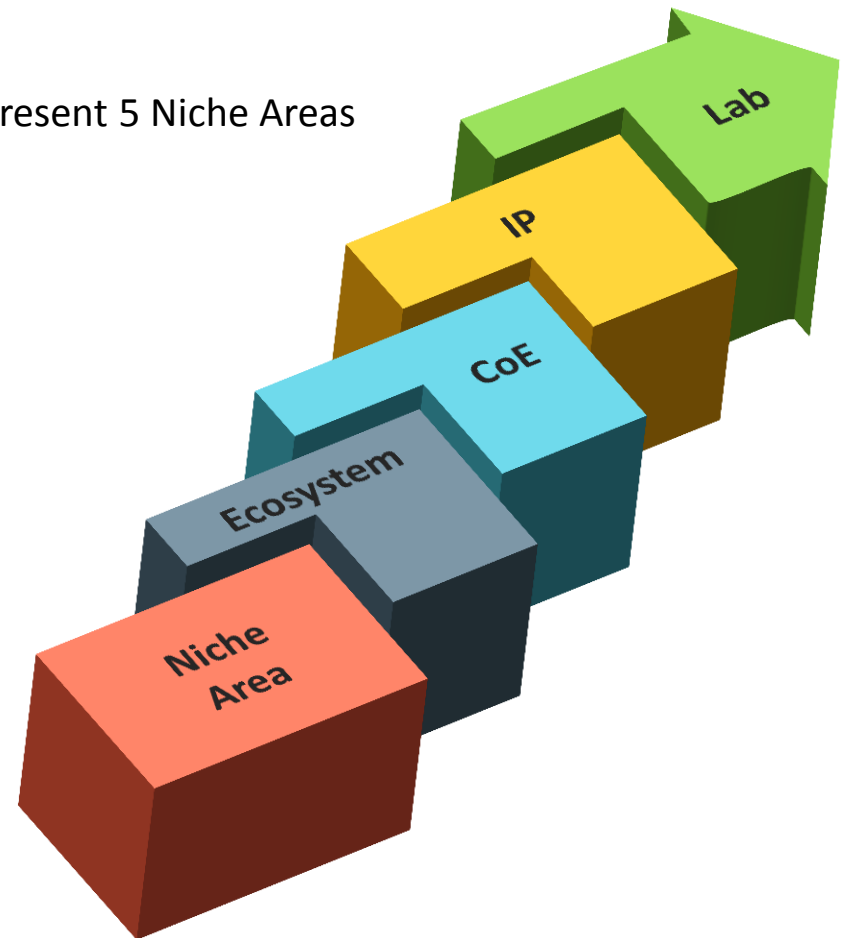
28 CoE consolidated to 6 Research Institutes

IP Office Rebranding

Rebranded ICC's Focus on IP and R&D Product Commercialization

Centralized Lab Management

Resource Sharing & Income Generation





1. National-wide research assessment for Malaysian Universities
2. Self-assessed every six months
3. Same Instrument is used for faculties' performance evaluation (every six months)
4. Faculties were ranked and the analysis is made aware (strength, weakness, strategic, etc.)
5. Part of faculty empowerment in R&I



Higher Education Centre of Excellence

1. National-wide research assessment for national level CoE
2. Same Instrument is used for CoE' performance evaluation (every six months)
3. CoE were ranked and the analysis is made aware (strength, weakness, strategic, etc.)
4. To drive the CoE towards more well-rounded R&I excellence

Academic Staff Performance

1. Academic staff R&I performance based on MyRA implemented in yearly performance evaluation
2. This new KPI enable academic staff contribution in non-conventional R&I activities to be counted (e.g.: policies, community projects)
3. Part of University databank for datasets not easily traceable (e.g.: non-index publications, reports)
4. Evaluation by superior based on research entity membership

Key

Performance

Indicator



MyRA[®]
MALAYSIA RESEARCH ASSESSMENT



Community Projects

1. Under the National Blue Ocean Strategy, Community Transformation Centre was established
2. UCTC (or known as CCIN in UTM) further enhanced academia-industry collaboration and bring research impact to community



NBOS
STRATEGI LAUTAN BIRU KEBANGSAAN



UCTC
PUSAT TRANSFORMASI KOMUNITI UNIVERSITI

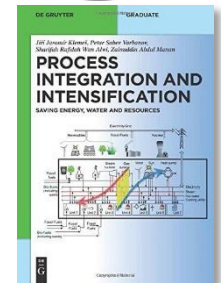
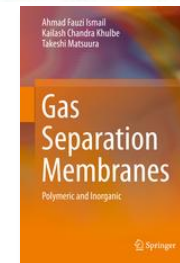
Policies/Initiatives



Harnessing and Inspiring Top Notch Scientist & Researchers



Johor Strategic Innovation Institute



Publication Policy/ Incentives



Branding initiatives (academic profiles, etc.)



UTM Global Plan (three phases)

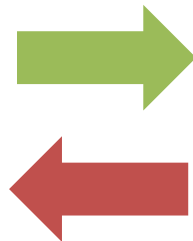
Policies/Initiatives (cont')

1. Research Entities Membership
2. Consultancy/Income Generation Policies
3. Publication Encouragement Scheme
4. International/Private Grant Champions
5. QRiM: towards standards & lean process flow
6. Intellectual property policy

Two Way Engagement



1. To ensure proper information channel/flow
2. To take note and take action on any issue
3. Moderator for bigger issue involving multiple units



inovatif • entrepreneurial • global

Research Capacities

