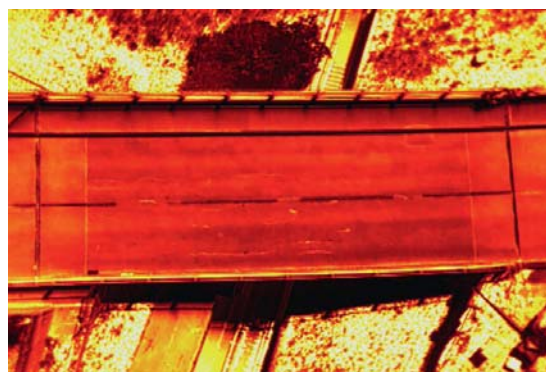


# GUEST LECTURE

Clemens Kielhauser

## Research perspective on Infrastructure Information Modeling



31.05.2017

10:30

Rechbauerstraße 12 HS VIII

BIM is becoming more and more the standard in the construction industry, but what about the **larger scale**, such as **urban infrastructure networks**?

This lecture will be about **how information is managed** on large scale infrastructure networks, and how this **information can be updated using new technologies**, such as UAVs

**ETH**

Eidgenössische Technische Hochschule Zürich  
Swiss Federal Institute of Technology Zurich