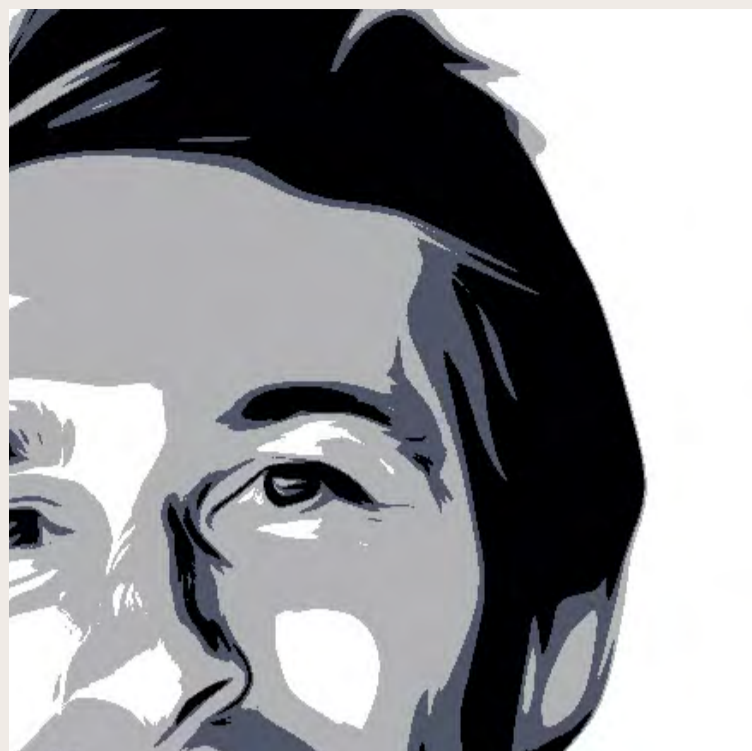


ARCHITECTURE OF RESOURCES: KNOW-HOW AND TERRITORY



**CHRISTOPHE
AUBERTIN
STUDIOLADA**

30.01.2024

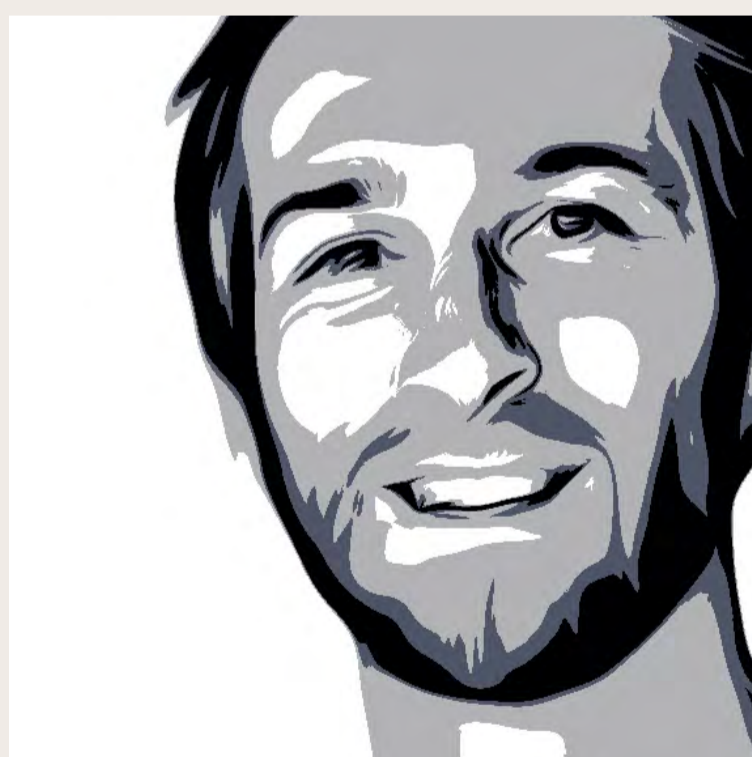
15h30-16h30 (UTC +1)

<https://ethz.zoom.us/j/69016476131>

**PUBLIC
LECTURE**

Christophe Aubertin is an Architect. He studied in ENSA Nancy, where he is teaching now. His architectural practice takes mainly part in the collective office Studiolorada, which he co-founded in 2009. He received many distinctions for his projects, each reaching new benchmarks for sustainability. As a matter of fact, he also studied in the School for timber technologies and industries ENSTIB in France, allowing him to design high quality timber structures with a rational use of resources. The collective process of his design is fascinating, and the projects are very much appreciated by the users. He will present some of his projects and explain how his practice is evolving to face our world in transition.

**C A S
E T H
R E -
G E N
M A T**



Prof. Dr. Guillaume Habert
Dr. Arnaud Evrard

ETH - Chair of Sustainable Construction

ETH zürich

DBAUG

Ricola Foundation