

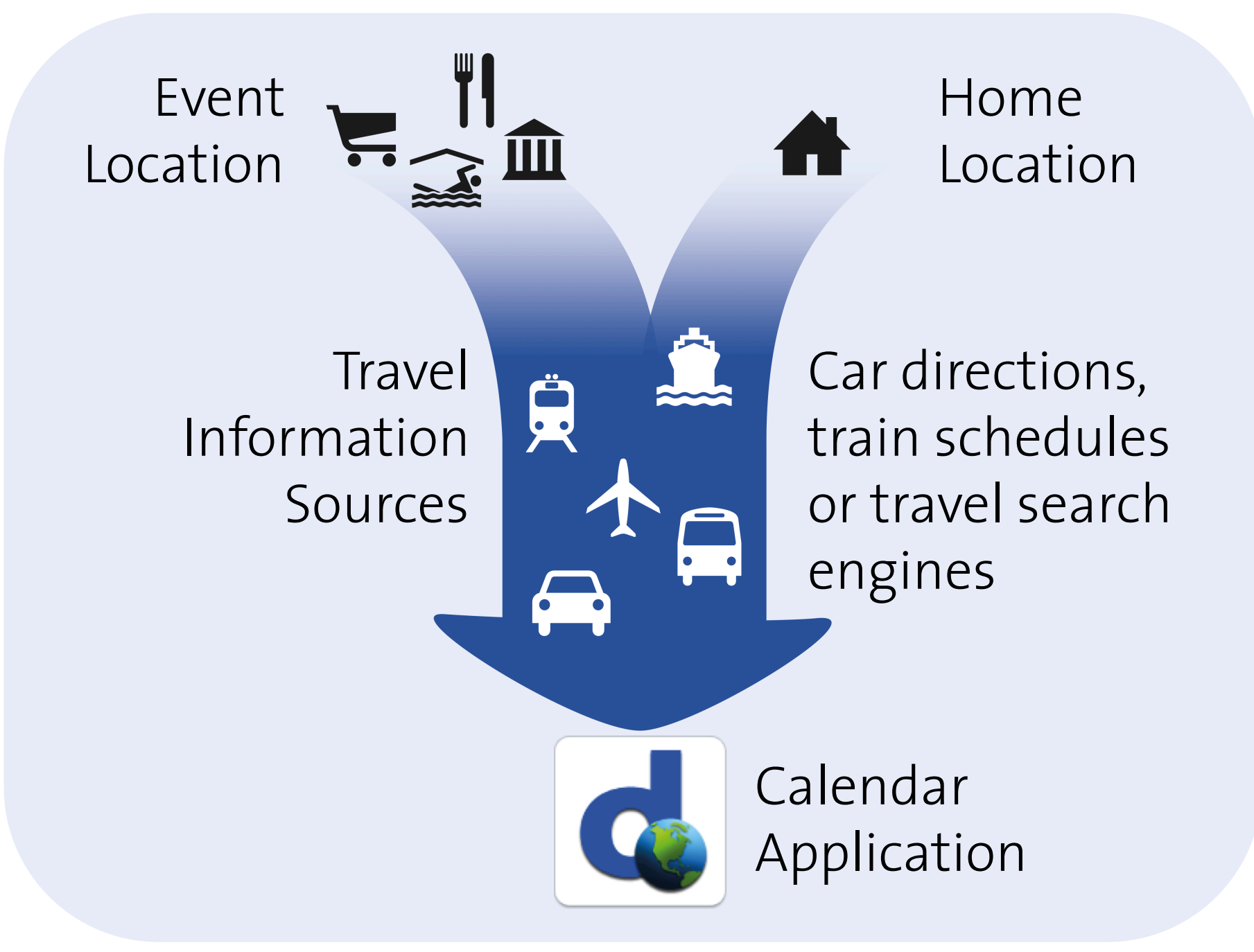
# Integration of Travel Time in a Calendar Application

Author: Elisabeth Leu

Master's Thesis, HS 2011

Supervisors: Prof. Dr. Martin Raubal (ETH Zürich) and Oliver Ganz (Doodle AG)

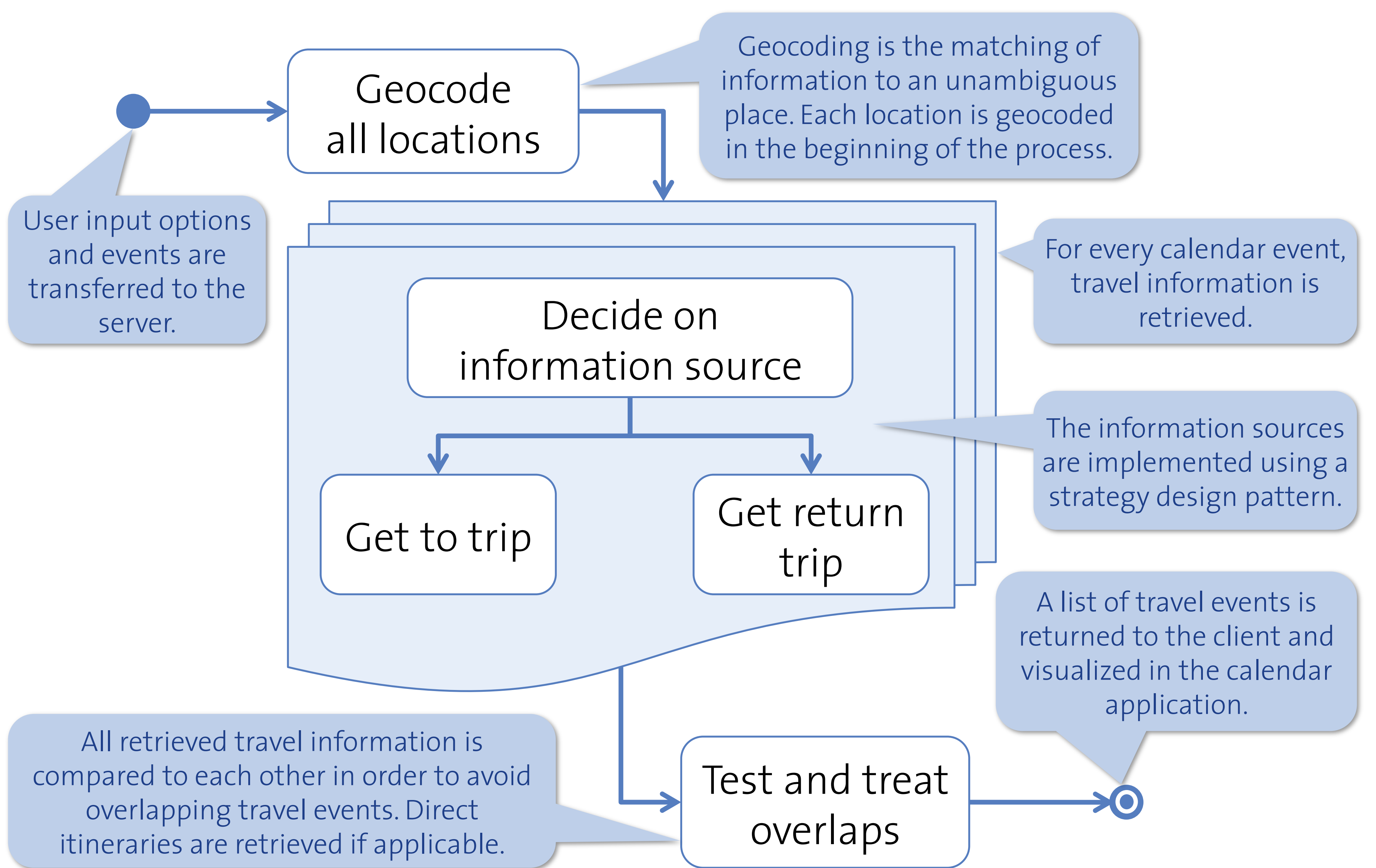
## Goal



Travel information to and from an event are derived from web services, such as public transportation schedules or car directions, and integrated in the web-based scheduling application of doodle.com.

## Implementation

The travel information retrieval in the calendar application follows the activity diagram shown hereafter.



## Travel Information Sources

Several existing information sources are evaluated according to:

- Means of transportation
- Level of detail
- Transportation system
- Geocoding abilities
- API availability

### Choice

A combination of Google Maps, routeRANK and Bing Maps is chosen for implementation.

## User Test

### Task

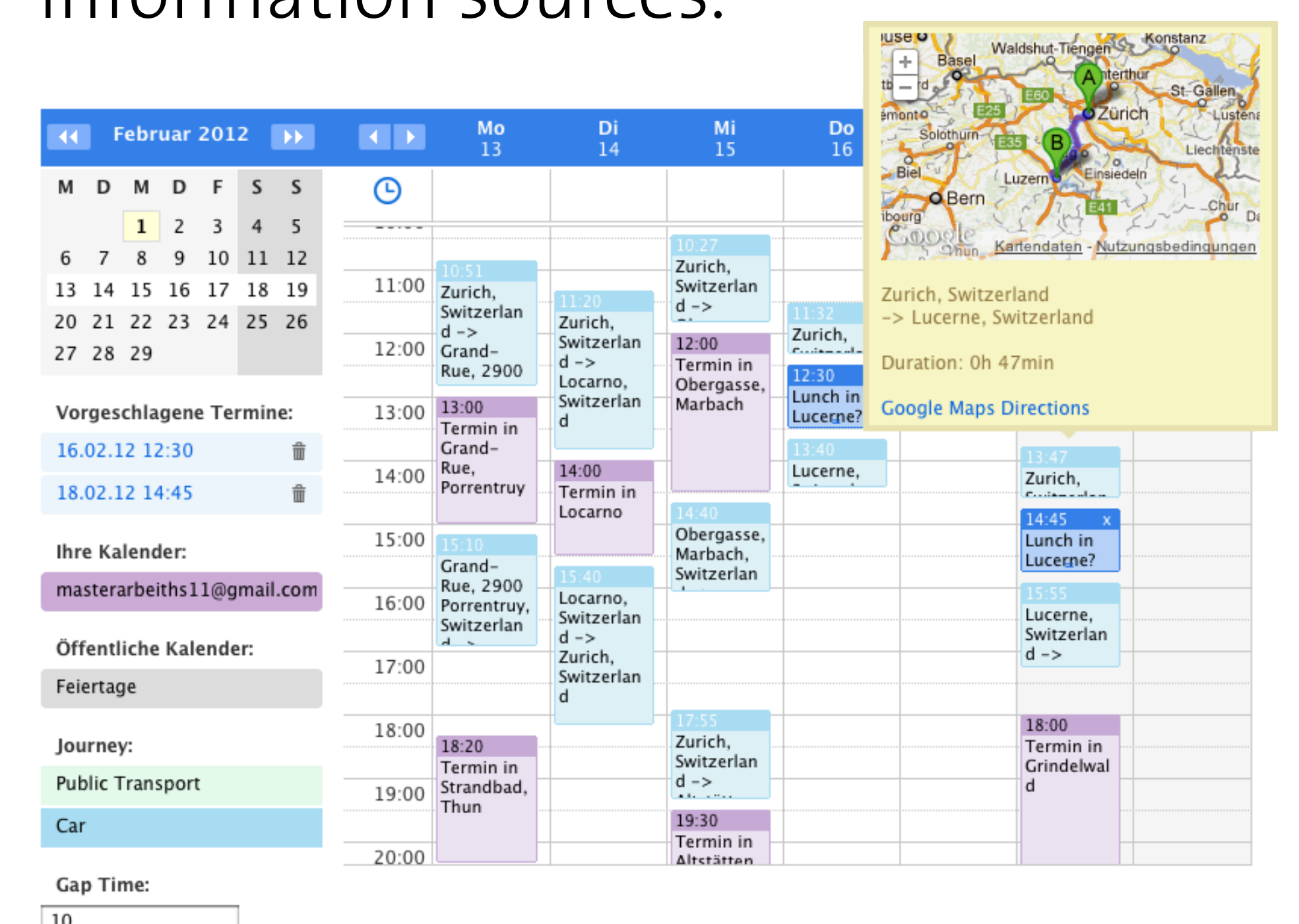
Six test users had to set up a Doodle poll and decide on their suggestions with the help of the travel information button, visualizing the travel times of car directions or public transportation schedules.

### Suggested Improvements

- Error communication to the user
- Further user options
- Additional functionalities (e.g. parking spot information)
- Layout representation

## Conclusion

Travel times have been integrated successfully into the calendar application. Information quality and the stability of the system highly depend on the travel information sources.



A screenshot of the travel information functionality