

From Wasteland to Oasis

Evidence of an Agricultural Development Program

Inga Nienkerke¹, Yogesh Sawant², Anthony Patt³
^{1,3}D-USYS, ETH Zurich; ²BAIF Development Research Foundation, India



With soil conservation, water resource development, fruit trees and intercropping, marginalized farmers turn their degraded lands into green assets and break out of a vicious cycle of resource degradation and chronic poverty.



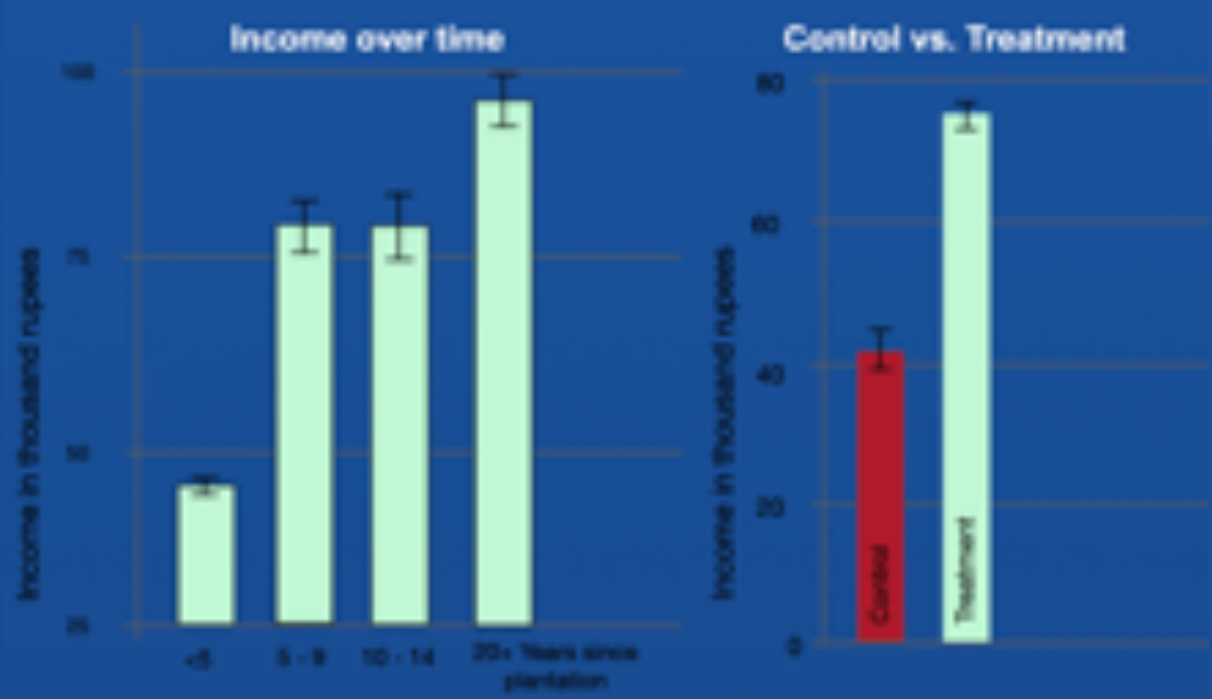
METHODS

- Survey of 2000 households randomly sampled from 200.000 participants
- Random geographic rollout of the program produced a natural experiment and gave rise to treatment and control groups



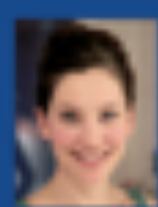
KEY-FINDINGS

- Higher incomes, positive life changes, ecological benefits
- Degraded farmland can be transformed into green assets if poverty alleviation and environmental degradation are tackled in a holistic approach
- This presents a role model for wider replication



Transformative effects of trees on farmland and livelihoods:

- Exploited seasonal migrants → agricultural entrepreneurs
- Degraded wastelands → enriched ecosystems
- Struggle for survival → stable life in dignity
- Impoverished villages → vibrant local economy



Inga M. Nienkerke
 Environmental Systems Science
 ETH Zürich
 inga.nienkerke@usys.ethz.ch

Nienkerke, I., Patt, A., (in press). From wasteland to oasis: Transformative effects of trees on farmland and livelihoods, *Land Degradation & Development*
 DOI: 10.1002/ldr.4422



Research areas