

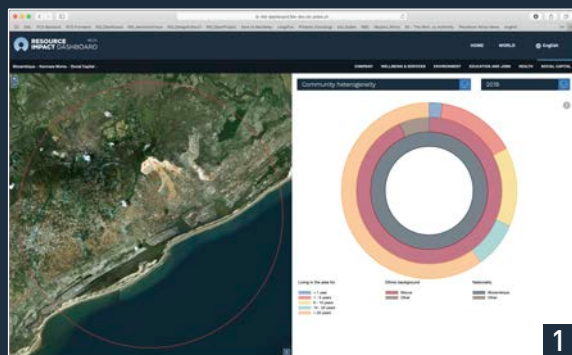


Mozambique, Batama, 2013 2018

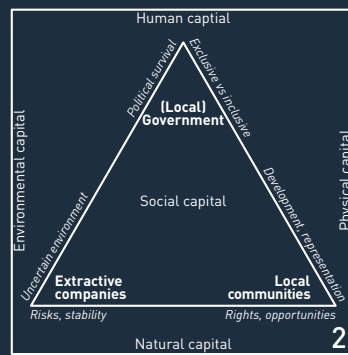


Graphite mine
A Li-Battery contains 40 times more graphite than lithium.

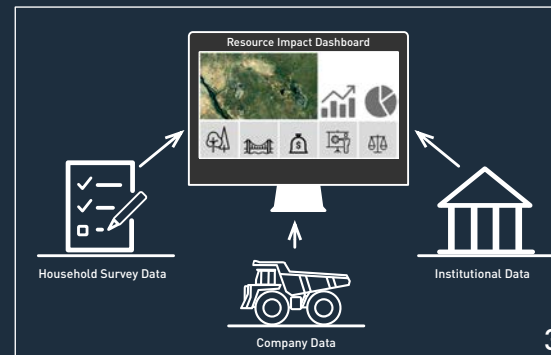
Monitoring development risks of the green economy agenda



1



2



3



4

The Resource Impact Dashboard (RID) is an online available tool to collect evidence on the local effects of resource extraction in order to inform policy deliberations (1). The RID methodology is based on a relational theory of

development (2), a data collection methodology based on triangulation (3), and extensive field testing and stakeholder involvement in four mining areas in Burkina Faso and Mozambique (4). Areas of monitoring include:

Community dynamics

- Asset-based wealth, access to services and educational achievements;
- Vulnerability and resilience proxies such as land security, financial distress, quality of education and health services;
- In-migration, community engagement, level of intra-community trust and conflict.

Government relations

- Interest in public affairs, knowledge of mining issues, information sources, trust in media;
- Participation in local politics, quality of relations with formal and traditional authorities;
- Perceived effectiveness in providing services, good use of mining revenues, impartiality in exercising authority.

Company relations

- Local procurement and employment compared with households benefitting from mine employment;
- Mining companies' efforts to engage with information, consultation, social investment, whether this reaches households and whether they trust such efforts;
- Communities' environmental perceptions compared to companies' environmental monitoring and rehabilitation efforts;
- General acceptance of mining, satisfaction of compensation arrangements, knowledge of grievance mechanisms and trust that the mine treats claims fairly.