



ETH Zurich Main Building

Registration

ETH Zurich, School for Continuing Education

HG E 18.1, Rämistr. 101, 8092 Zurich

phone +41 44 632 56 59

E-Mail: info@zfw.ethz.ch

www.sce.ethz.ch

Application period

Autumn Semester: 1 January - 30 April

Spring Semester: 1 July - 31 October

Later applications may be accepted upon request

Contact

ETH Zurich

Institute of Food, Nutrition and Health

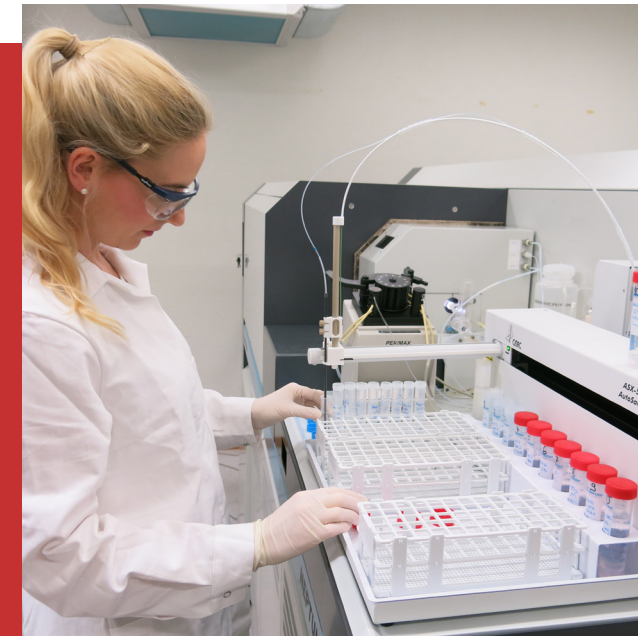
Human Nutrition Laboratory

Schmelzbergstrasse 7, LFV

8092 Zurich, Switzerland

www.humannutrition.ethz.ch

ETH zürich



MAS ETH NH

Master of Advanced Studies
ETH in Nutrition and Health

DHEST

Department of Health Sciences and Technology

MAS ETH NH

Master of Advanced Studies ETH in Nutrition and Health

Objectives

This course offers an advanced education that gives a broad overview on aspects of food and nutrition, their influence on health, and prevention of diseases. This also includes in-depth knowledge in physiology of eating, nutrition related toxicology, nutrigenomics as well as research methodologies related to nutrition.

MAS NH graduates are trained to identify and understand problems of nutrition and the interrelationship between diet and health. Emphasis is on the role of diet in the prevention of chronic disease in industrialized countries, and on preventing micronutrient and macronutrient malnutrition in the developing world.



Wheat based test meal for a zinc absorption study

Program

The program consists of 15 compulsory courses, 10 optional courses, 1 week of laboratory analysis and the Master Thesis.

Organization

The MAS NH is designed as two semester full-time study or can be extended to 3 or 4 semester as a part-time load. Teaching is concentrated on Wednesdays through Fridays. The general study language is English.

The title «Master of Advanced Studies ETH in Nutrition and Health» is awarded when 40 ECTS credits are achieved through lectures and 20 ECTS credits through the MAS Thesis. This corresponds to a total of 1800 study hours, including presence in classes, preparation and processing time, performance control and writing of thesis.

Professional perspectives

Depending on the field of expertise, jobs can be expected in nutrition research at university, nutrition teaching at different levels, nutrition journalism, governmental and non-governmental organizations, pharmacy and different sections of the food industry.



Fortification study in Beninese school children

Requirements

Master's degree in Natural Sciences, Medicine, Pharmacy or Movement Sciences acknowledged by ETH or equivalent qualification.

Program fee: CHF 19'500.-

Program start: Spring and Autumn Semester

Location: ETH Zurich Zentrum