

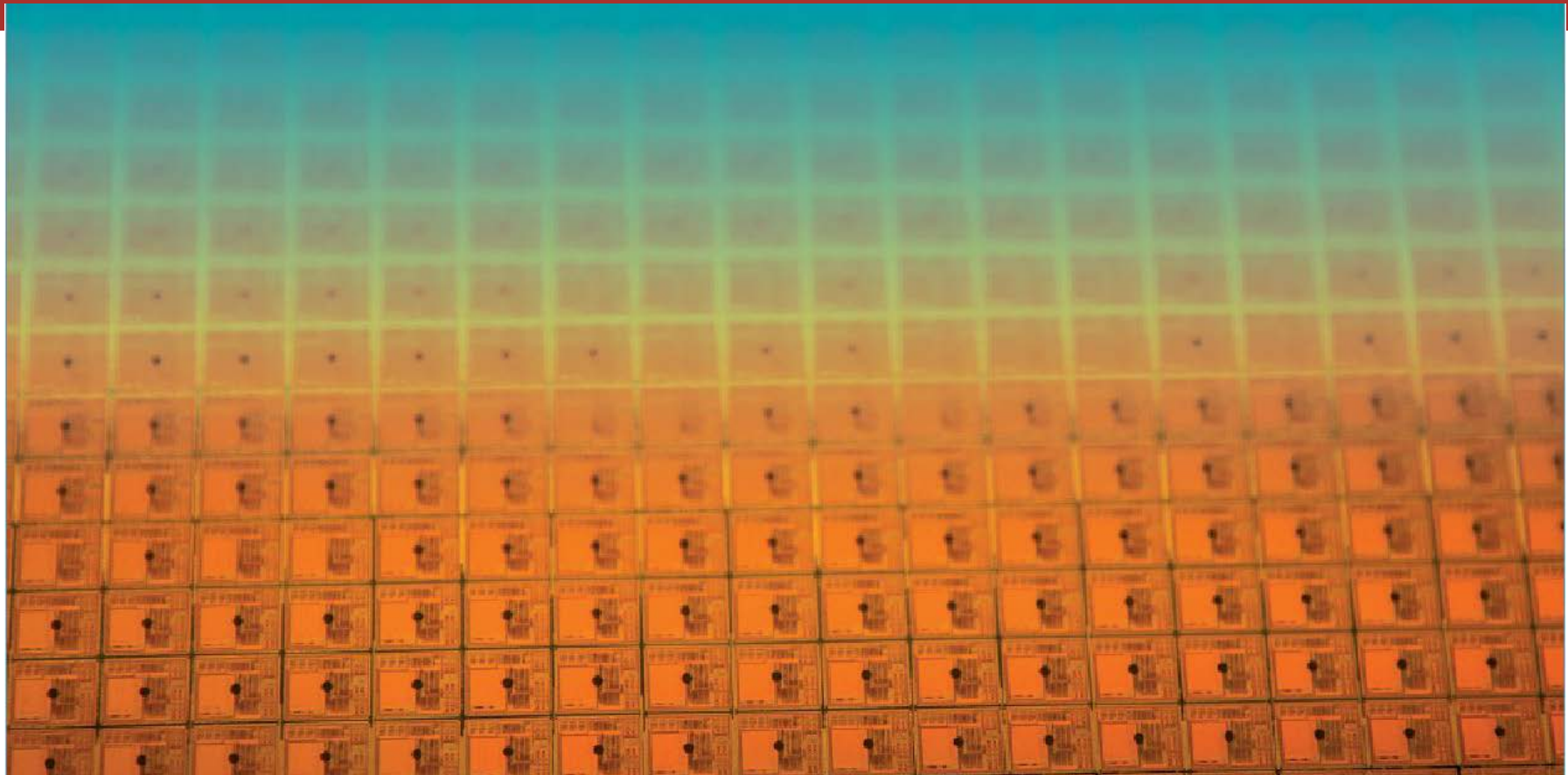


Welcome to ETH Zürich and D-ITET

Administrative notes

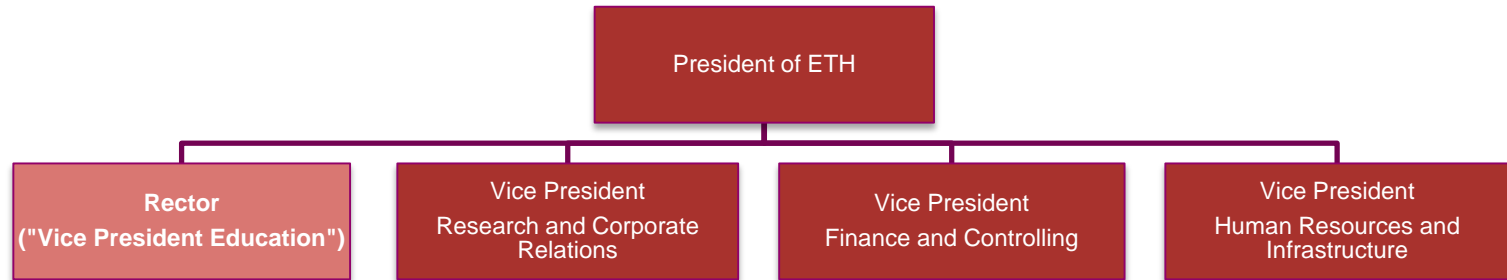
September 15, 2014

Reto Kreuzer, Student Exchange Advisor D-ITET



ETH and ITET: structure & key figures

ETH Zürich: Organization and structure



16 Departments for Education and Research

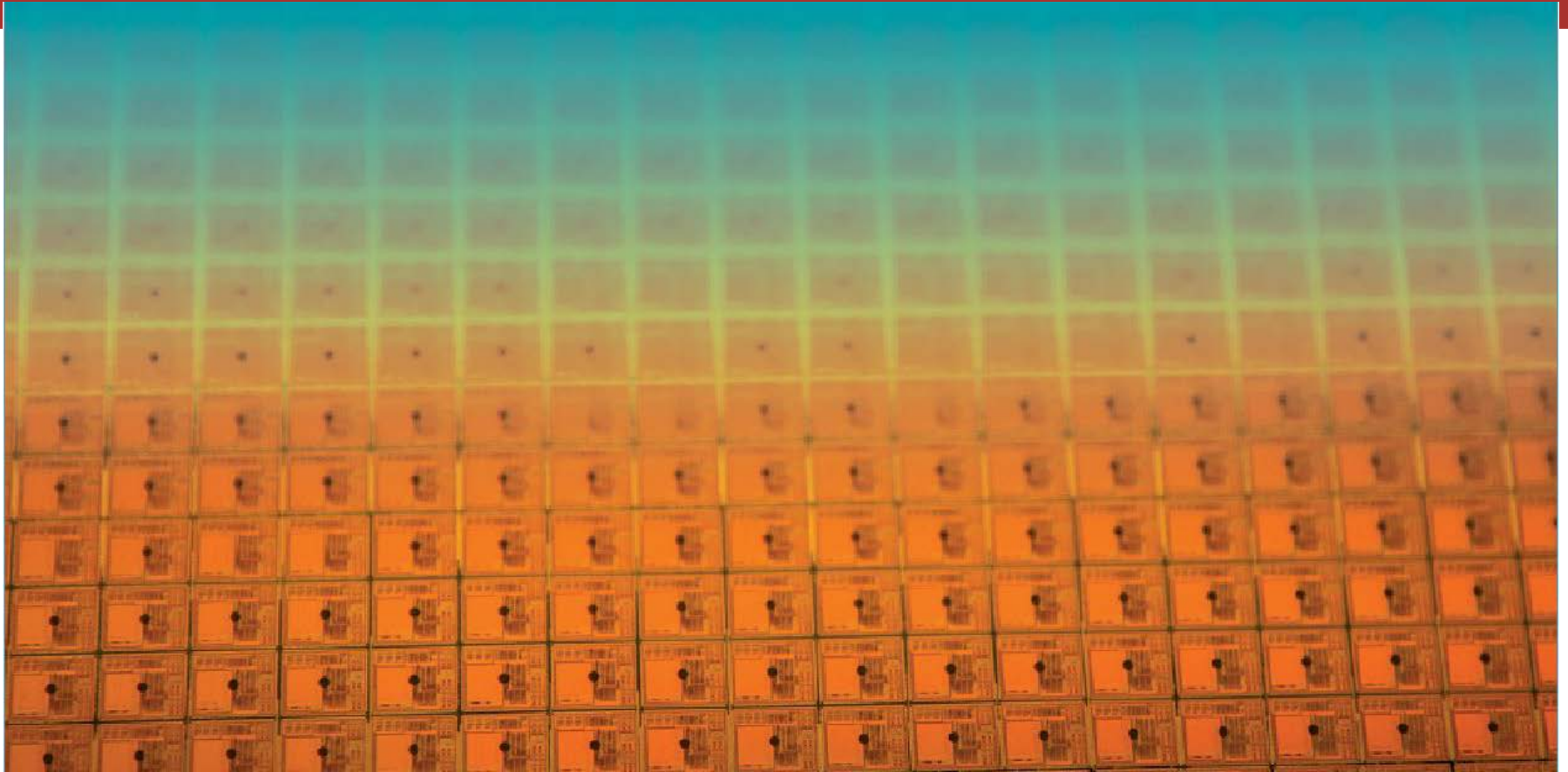
Architecture and Civil Engineering	Engineering Sciences	Natural Sciences and Mathematics	System-oriented Natural Sciences	Management and Social Sciences
Architecture	Mechanical and Process Engineering	Mathematics	Earth Sciences	Management, Technology and Economics
Civil, Environmental and Geomatic Engineering	Information Technology and Electrical Engineering	Physics	Environmental Systems Science	Humanities, Social and Political Sciences
	Computer Science	Chemistry and Applied Biosciences	Health Sciences and Technology	
	Materials Science	Biology		
	Biosystems Science and Engineering			

D-ITET: Size and members

- 11 laboratories (institutes) und 5 independent Professorships
- 34 professors (1 female)
- ca. 500 scientific and administrative employees
- ca. 390 PhD students
- ca. 1'100 undergraduate and master students

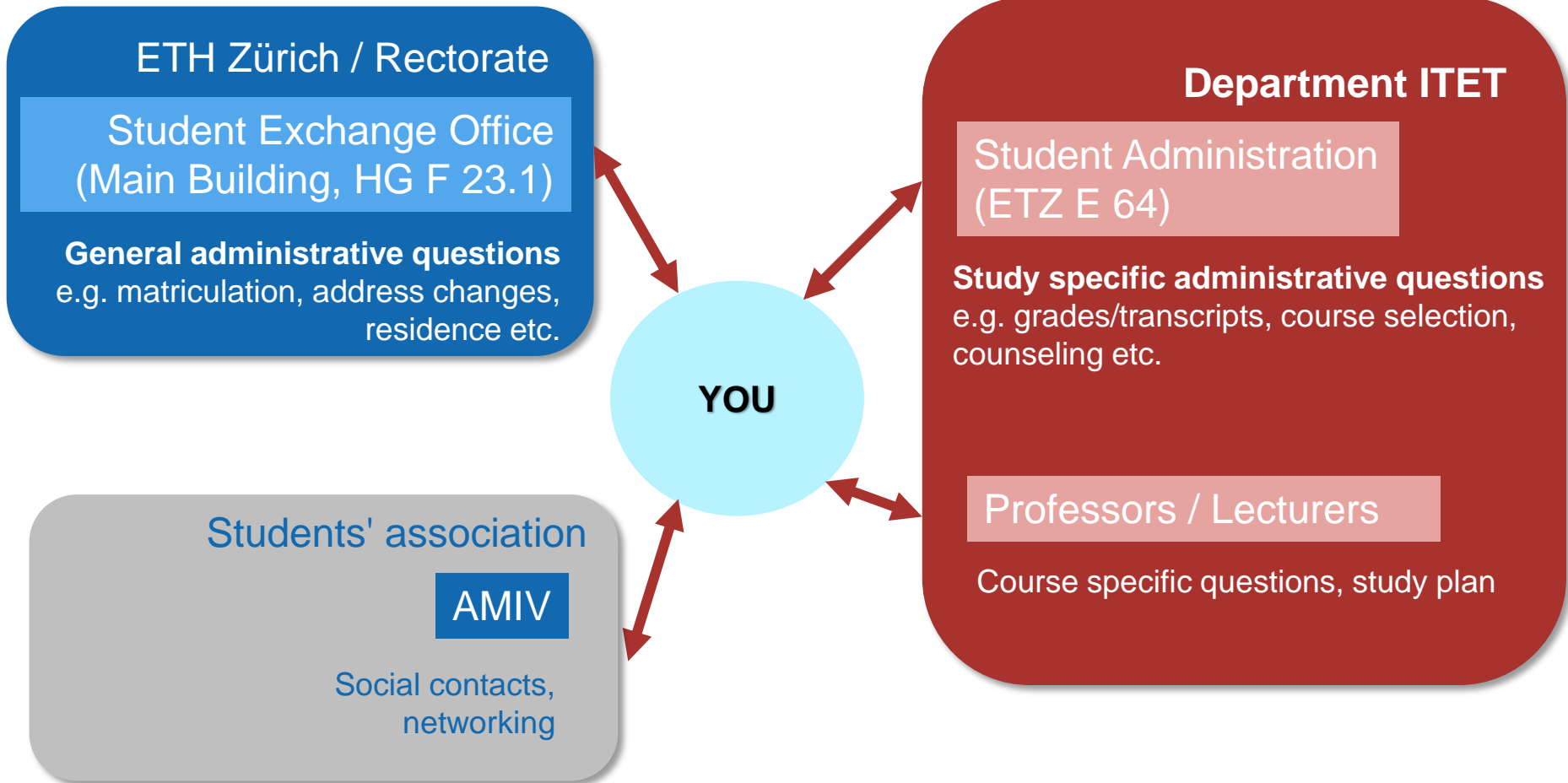
Students at ETH and D-ITET (2013 figures)

Students at ETH	18'743
Female Students	31 %
International Students	37 %
Students at D-ITET	1'470
Female Students	14 %
International Students	44 %
Students at bachelor level (year 1-3)	
ETH	8'862
D-ITET	578
Students at master level (year 4-5)	
ETH	4'778
D-ITET	457
Electrical Engineering MSc	281
Biomedical Engineering MSc	62
Energy Science & Technology MSc	90
Neural Systems and Computation MSc	24
Exchange students	
ETH	406
D-ITET	48
PhD students	
ETH	3'894
D-ITET	387



ETH and ITET: finding the right contact

Your most important contacts



Where to find Information

- General Information on studies at ETH
www.ethz.ch/students/ (requires login)
www.ethz.ch > Studies > Non-degree courses
- Information on the Department of Electrical Engineering
www.ee.ethz.ch > Studies > Student Exchange
- Course catalogue
www.vvz.ethz.ch
- Messages from ETH and the Department
Email on your ETH-Address (accountname@student.ethz.ch)
→ **check your mailbox regularly and read the messages carefully!**

Students online portal: www.mystudies.ethz.ch

Your administrative duties:

- **Enrollment to courses and exams**
 - Register for each semester until the end of the second week.
 - Register for **courses** (early in the semester; you need to be registered for a course to enroll for an exam)
 - Enroll for **exams** – please enroll during the **3rd and 4th week** of the semester (withdrawal possible until very late).

- **Notify us of your address changes**

- **Read your E-Mails**

Enrolling for courses – Reminder

- **All** courses you wish to **appear** on your transcript must be enrolled for (both the course and the exam). Courses without an ETH course number (xxx-xxxx-xx), e.g. certain language courses, will not appear on the transcript.
- If you are here for a **Semester Project** or the **Master Thesis** do not forget to enroll for them too.
- For those two, you will also need to submit a [registration form](#) at the students administration (ETZ E 64).

Computer infrastructure at ETH / D-ITET

- All ETH Computers (e.g. Main Building HG D 11, or ET-Building ETZ D 61.1) require your **n.ethz** password (same as used for myStudies).
- Only D-ITET students can access the computer infrastructure in the ET area, should you encounter a problem, contact the IT-Support group at D-ITET (ETL F 22): support@ee.ethz.ch.
- **Project Neptun:** During a short period (until September 29), laptops may be purchased through ETH (see www.projektneptun.ch).
- **IDES:** ETH also offers software at very low cost, some products even for free (see stud-ides.ethz.ch).

More details?

- **My Office**

Reto Kreuzer, Student Exchange Advisor D-ITET, ETZ E 62

Please send an E-mail to fix an appointment (reto.kreuzer@ee.ethz.ch).

- **This presentation will be published on our website**

www.ee.ethz.ch > News & Events

Enjoy your studies at D-ITET!

