

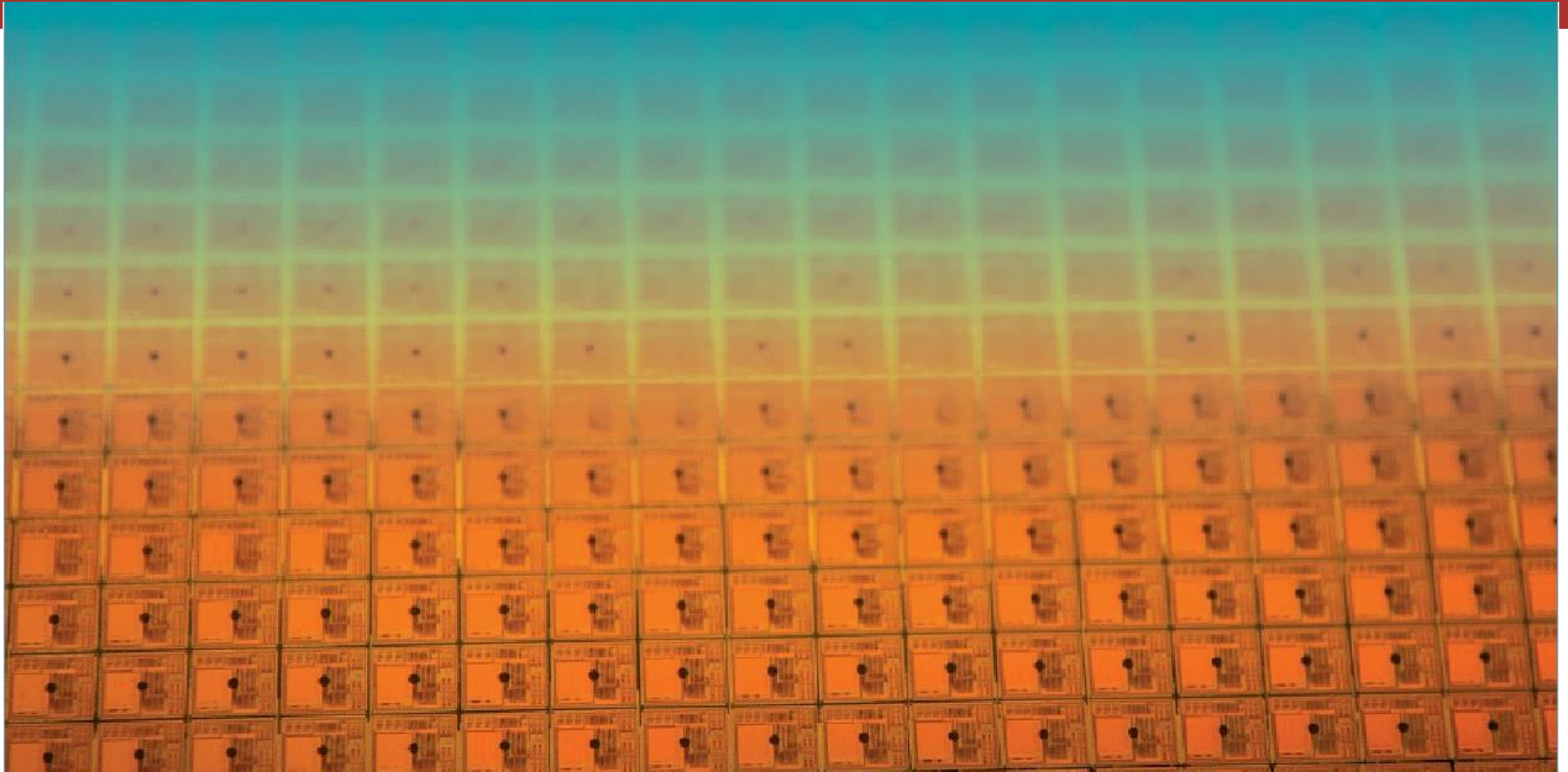


# Master Program in Biomedical Engineering

Administrative notes

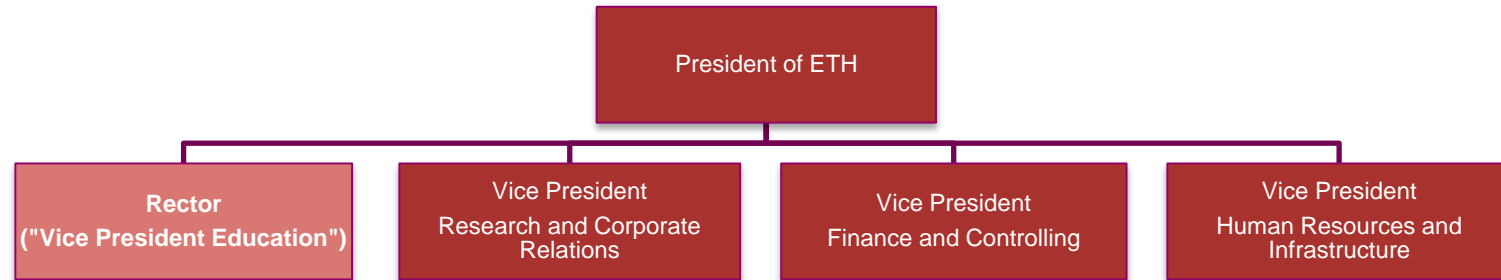
September 15, 2014

Reto Kreuzer, Coordinator of studies D-ITET



# ETH and ITET: structure & key figures

# ETH Zürich: Organization and structure



## 16 Departments for Education and Research

Architecture and Civil Engineering	Engineering Sciences	Natural Sciences and Mathematics	System-oriented Natural Sciences	Management and Social Sciences
Architecture	Mechanical and Process Engineering	Mathematics	Earth Sciences	Management, Technology and Economics
Civil, Environmental and Geomatic Engineering	Information Technology and Electrical Engineering	Physics	Environmental Systems Science	Humanities, Social and Political Sciences
	Computer Science	Chemistry and Applied Biosciences	Health Sciences and Technology	
	Materials Science	Biology		
	Biosystems Science and Engineering			

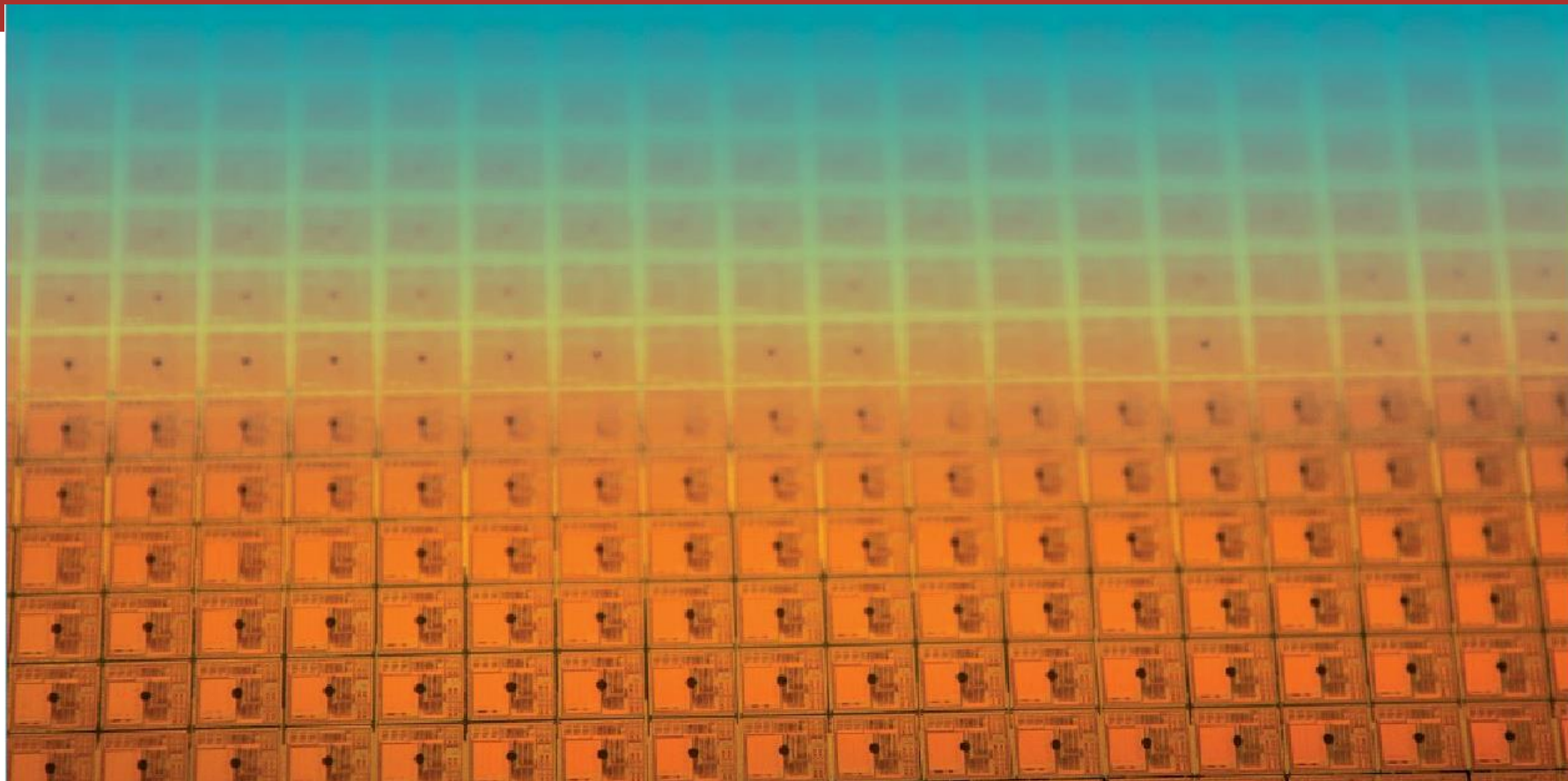
## D-ITET: Size and members

- 11 laboratories (institutes) und 5 independent Professorships  
2 laboratories in Biomedical Engineering and in Neuroscience
- 34 professors (1 female)  
9 professors in the field of Biomedical Engineering and Neuroscience
- ca. 500 scientific and administrative employees
- ca. 390 PhD students
- ca. 1'100 undergraduate and master students

# Students at ETH and D-ITET (2013 figures)

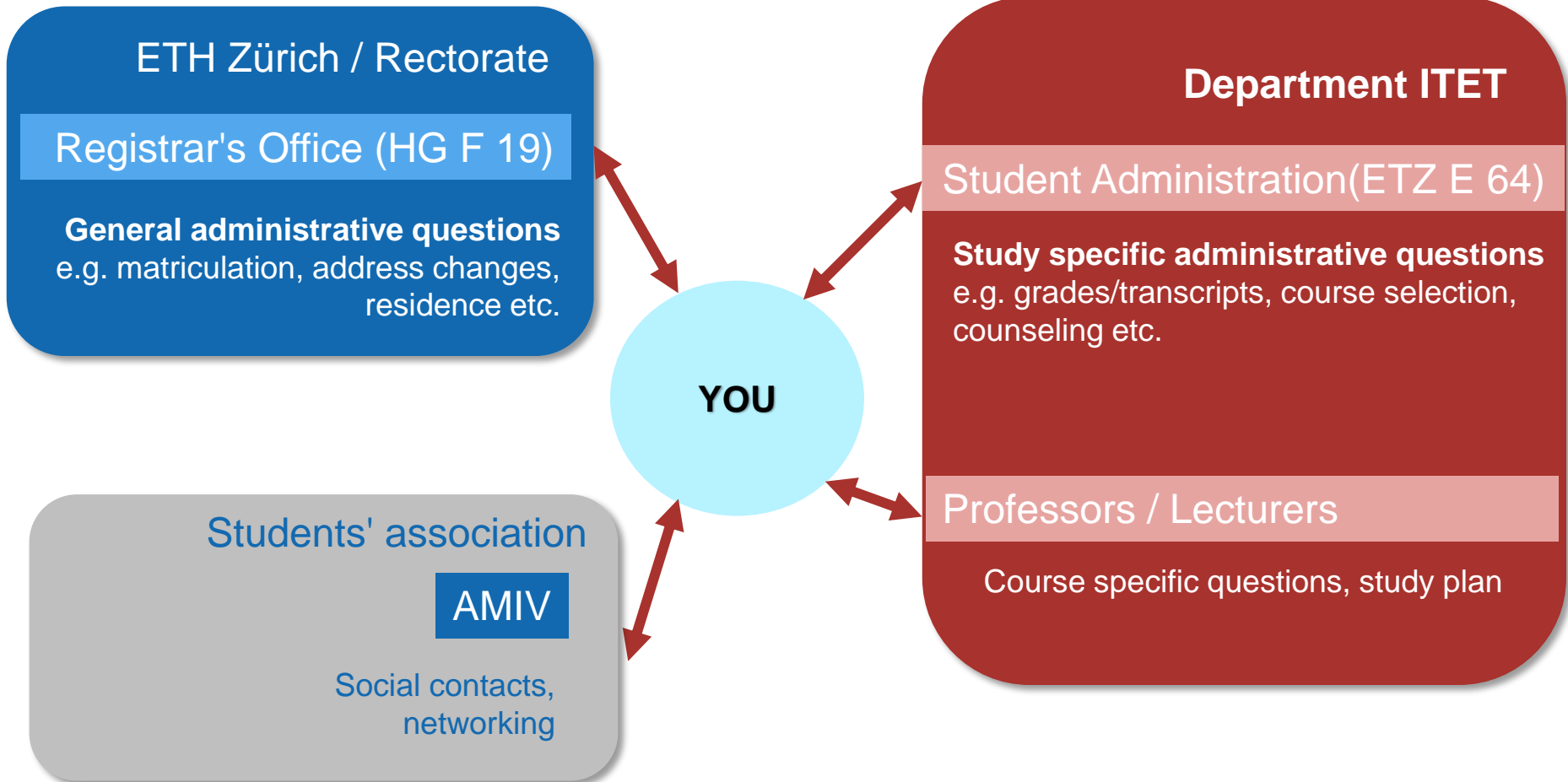
<b>Students at ETH</b>	<b>18'743</b>
Female Students	31 %
International Students	37 %
<b>Students at D-ITET</b>	<b>1'470</b>
Female Students	14 %
International Students	44 %
<b>Students at bachelor level (year 1-3)</b>	
ETH	8'862
D-ITET	<b>578</b>
<b>Students at master level (year 4-5)</b>	
ETH	4'778
<b>D-ITET</b>	<b>457</b>
Electrical Engineering MSc	281
<b>Biomedical Engineering MSc</b>	<b>62</b>
Energy Science & Technology MSc	90
Neural Systems and Computation MSc	24
<b>Exchange students</b>	
ETH	406
D-ITET	<b>48</b>
<b>PhD students</b>	
ETH	3'894
D-ITET	<b>387</b>





# ETH and ITET: finding the right contact

# Your most important contacts



# Where do I find information?

- General Information on studies at ETH  
ETH students' website: [www.ethz.ch/students](http://www.ethz.ch/students) (requires login)
- Information on the Master in Biomedical Engineering  
D-ITET website: [www.ee.ethz.ch](http://www.ee.ethz.ch) > Studies > Interdisciplinary Master (...)  
BME website: [www.master-biomed.ethz.ch](http://www.master-biomed.ethz.ch)
- Course catalogue  
Online: [www.vvz.ethz.ch](http://www.vvz.ethz.ch) > Programme > Biomedical Engineering Master
- Messages from ETH and the Department  
Email on your ETH-Address (username@student.ethz.ch)  
→ **check your mailbox regularly and read the messages carefully!**



# Your studies are subject to regulation

- **Study regulations** (available in German only)

[www.rechtssammlung.ethz.ch](http://www.rechtssammlung.ethz.ch)

[www.ee.ethz.ch](http://www.ee.ethz.ch) > Studies > Forms and Documents

- **Rector's Directives** (mostly in German)

[www.ethz.ch](http://www.ethz.ch) > Studies > Legal principles (...) > Legal basis > Directives Collection

International students, please contact Ms. Annina Wanner at the Rectorate (HG F 22.3) or the Department Secretariat (ETZ E 64).

# Students online portal: [www.mystudies.ethz.ch](http://www.mystudies.ethz.ch)

## Your administrative duties:

- **Enrollment to courses and exams**
  - Register for each semester until the end of the second week.
  - Register for **courses** (early in the semester; you need to be registered for a course to enroll for an exam)
  - Submit a [study plan](#) (until the **end of the 4<sup>th</sup> week**).
  - Enroll for **exams** – please enroll during the **3<sup>rd</sup> and 4<sup>th</sup> week** of the semester (withdrawal possible until very late).
  
- **Notify us of your address changes**
  
- **Read your E-Mails**

# How to choose / enroll for your lectures

- **Consult your track advisor!**
- **Overview of lectures to choose from:**  
<http://www.master-biomed.ethz.ch/education/focus>
- **Course catalogue:**  
[www.vvz.ethz.ch](http://www.vvz.ethz.ch) > Programme > Biomedical Engineering Master
- **Enrollment through the online-portal:**  
[www.mystudies.ethz.ch](http://www.mystudies.ethz.ch)

# Enrolling for courses – Reminder

- **All** courses you wish to **count** towards your Master Diploma must be enrolled for (both the course and the exam).
- In particular, do not forget to enroll for the **Semester Project** and the **Master Thesis**.
- For those two, you will also need to submit a [registration form](#) at the students administration (ETZ E 64).

# Computer infrastructure at ETH / D-ITET

- All ETH Computers (e.g. Main Building HG D 11, or ET-Building ETZ D 61.1) require your **n.ethz** password (same as used for myStudies).
- Only D-ITET students can access the computer infrastructure in the ET area, should you encounter a problem, contact the IT-Support group at D-ITET (ETL F 22): [support@ee.ethz.ch](mailto:support@ee.ethz.ch).
- **Project Neptun:** During a short period (until September 29), laptops may be purchased through ETH (see [www.projektneptun.ch](http://www.projektneptun.ch)).
- **IDES:** ETH also offers software at very low cost, some products even for free (see [stud-ides.ethz.ch](http://stud-ides.ethz.ch)).

## More details?

- **My Office**

Reto Kreuzer, Study Coordinator D-ITET, ETZ E 62

Please send an E-mail to fix an appointment ([reto.kreuzer@ee.ethz.ch](mailto:reto.kreuzer@ee.ethz.ch)).

- **This presentation will be published on our website**

[www.ee.ethz.ch](http://www.ee.ethz.ch) > News & Events



**Enjoy your studies at D-ITET!**

