



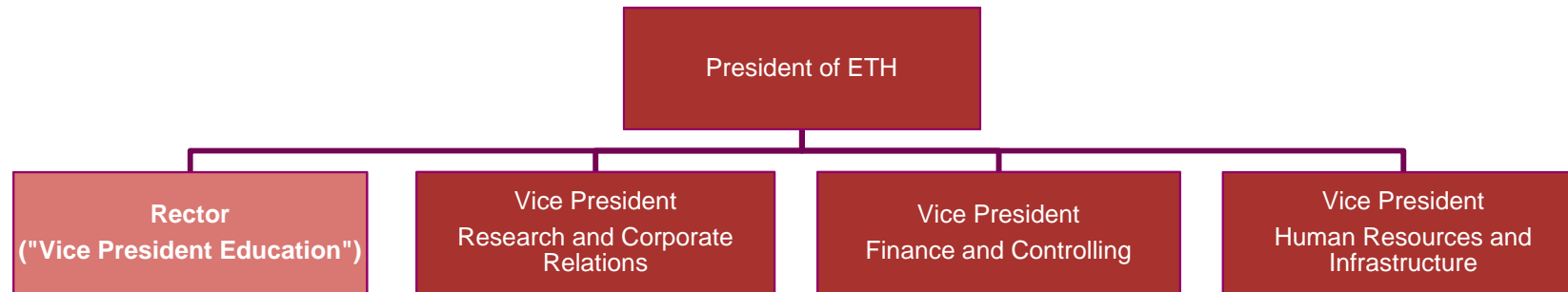
Welcome to Department of Information Technology and Electrical Engineering (D-ITET)

Introduction for exchange students

Reto Kreuzer, Student Exchange Advisor D-ITET

September 14, 2015

ETH Zürich: Organization and structure



16 Departments for Education and Research

Architecture and Civil Engineering	Engineering Sciences	Natural Sciences and Mathematics	System-oriented Natural Sciences	Management and Social Sciences
Architecture	Mechanical and Process Engineering	Mathematics	Earth Sciences	Management, Technology and Economics
Civil, Environmental and Geomatic Engineering	Information Technology and Electrical Engineering	Physics	Environmental Systems Science	Humanities, Social and Political Sciences
	Computer Science	Chemistry and Applied Biosciences	Health Sciences and Technology	
	Materials Science	Biology		
	Biosystems Science and Engineering			

D-ITET: Size and members

- 11 laboratories (institutes) und 5 independent professorships
- 37 professors (3 women), one fourth in the energy field
- ca. 500 scientific and administrative employees
- ca. 400 PhD students
- ca. 1'200 undergraduate and master students

Students at ETHZ and D-ITET (2014 figures)

Students at ETH	19'175
Female Students	31 %
International Students	37 %
Students at D-ITET	1'547
Female Students	15 %
International Students	44 %
Students at bachelor level (year 1-3)	
ETH	8'938 (*30%)
D-ITET	635 (*10%)
Students at master level (year 4-5)	
ETH	5'159 (*31%)
D-ITET	474 (*20%)
Electrical Engineering MSc	294 (*12%)
Biomedical Engineering MSc	67 (*48%)
Energy Science & Technology MSc	89 (*24%)
Neural Systems and Computation MSc	24 (*33%)
Exchange students	
ETH	346 (*33%)
D-ITET	37 (*22%)
PhD students	
ETH	3'975 (*31%)
D-ITET	401 (*17%)

Your most important contacts: who?

ETH / Rectorate

**Student Exchange Office
(HG F 23.1)**

General administrative questions
e.g. matriculation, address changes,
residence etc.

D-ITET / central services

Student Admin (ETZ H 85)

Study specific admin. questions
e.g. grades/transcripts, course selection,
counselling



Students

Students' association

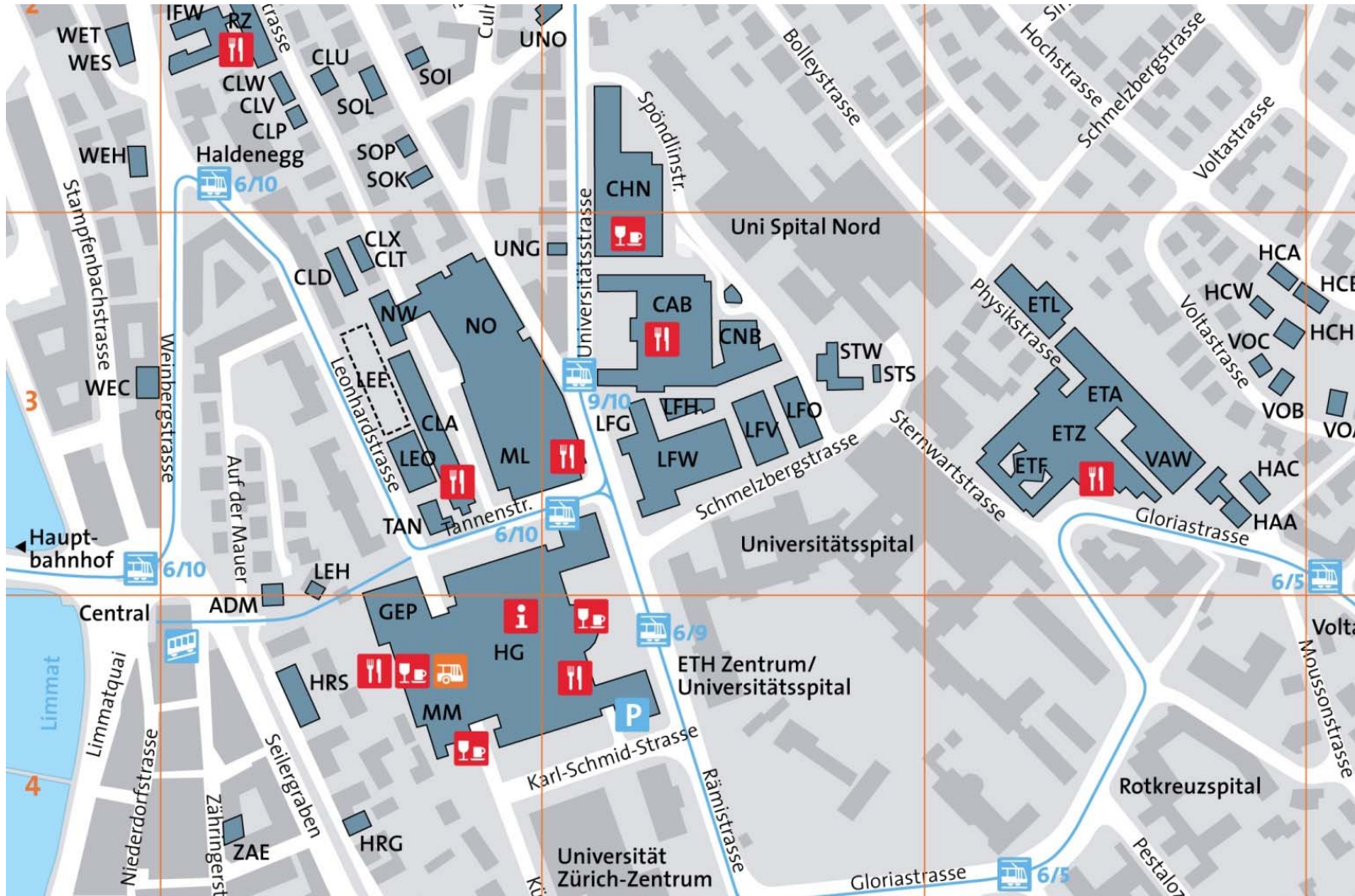
AMIV (CAB E 37)

Social contacts,
networking

Tutors / Lecturers / TA

Course specific questions, study plan

Your most important contacts: where?



Information on the web

- **General Information on studies at ETH**

www.ethz.ch/students

www.ethz.ch > Studies > Non-degree courses

- **Information on the Department of Electrical Engineering**

www.ee.ethz.ch > Studies > Student Exchange

- **Course catalogue**

www.vvz.ethz.ch

- **Messages from ETH and the Department**

Email on your ETH-Address (accountname@student.ethz.ch)

→ **check your mailbox regularly and read the messages carefully!**

Students online portal - Reminder

Your administrative duties (on www.mystudies.ethz.ch):

- **Enrollment to courses and exams**
 - Register for each semester until the end of the second week.
 - Register for **courses** (early in the semester; you need to be registered for a course to enroll for an exam)
 - Enroll for **exams** – please enroll during the **3rd and 4th week** of the semester (withdrawal possible until very late).

- **Notify us of your address changes**

- **Read your E-Mails**

Enrolling for courses – Reminder

- **All** courses you wish to **appear** on your transcript must be enrolled for (both the course and the exam). Courses without an ETH course number (xxx-xxxx-xx), e.g. certain language courses, will not appear on the transcript.
- If you are here for a **Semester Project** or the **Master Thesis** do not forget to enroll for them too.
- For semester projects, you will also need to submit a [registration form](#) at the students administration (ETZ H 85).

Changing the learning agreement

- If your initial course selection has to be changed for any reason (overlapping courses, change of interest, limited number of available spaces) you must **change the learning agreement** not only in myStudies but in [Mobility Online](#) too.
- An **invitation** to do so (if needed) will be sent by the student exchange office in the second week of the semester.
- **Verify** your new course selection with me, **before** submitting to Mobility Online.

Computer infrastructure at ETH / D-ITET

- All ETH Computers (e.g. Main Building HG D 11, or ET-Building ETZ D 61.1) require your **n.ethz** password (same as used for myStudies).
- Only D-ITET students can access the computer infrastructure in the ET area, should you encounter a problem, contact the IT-Support group at D-ITET (ETF D 106): support@ee.ethz.ch.
- **Project Neptun:** During a short period (until September 24), laptops may be purchased through ETH (see www.projektneptun.ch).
- **IDES:** ETH also offers software at very low cost, some products even for free (see stud-ides.ethz.ch).

More details?

- **My Office**
Reto Kreuzer, Student Exchange Advisor D-ITET, ETZ H 83
Please send an E-mail to fix an appointment (reto.kreuzer@ee.ethz.ch).
- **This presentation will be published on our website**
www.ee.ethz.ch > News & Events

Enjoy your studies at D-ITET!

