



# Welcome to Department of Information Technology and Electrical Engineering (D-ITET)

## Introduction for exchange students

Reto Kreuzer, Student Exchange Advisor D-ITET

September 17, 2018

# Welcome to the Department of Electrical Engineering and Information Technology!



# Exchange studies at D-ITET

## A very international programme:

Australia, Austria, Belgium, Canada, China, Denmark, France, Germany, Hong Kong, Italy, Japan, Netherlands, Norway, Russia, Spain, Sweden, Switzerland, United Kingdom

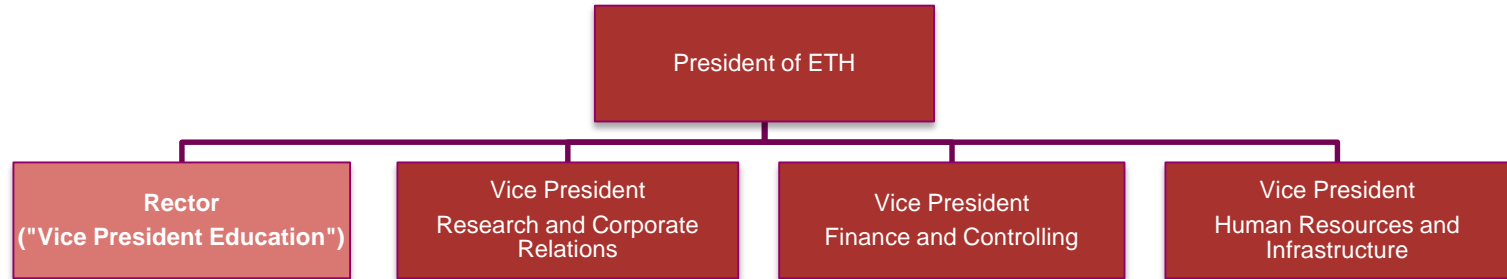
## Great variety of schools:

Australian National University (ANU), Canberra, Danmarks Tekniske Universitet (DTU), Lyngby, Ecole polytechnique fédérale de Lausanne (EPFL), Imperial College London, Institut national des Sciences appliquées de Lyon (INSA), Katholieke Universiteit Leuven, Kungliga Tekniska högskolan (KTH), Stockholm, Norges teknisk-naturvitenskaplige universitet (NTNU), Trondheim, Peking University (PKU) - Beijing, Politecnico di Milano, Rheinisch-Westfälische Technische Hochschule Aachen (RWTH), Skolkovo Institute of Science and Technology, Technische Universität Carolo-Wilhelmina zu Braunschweig, Technische Universität München (TUM), Technische Universität Wien, Technische Universiteit Delft (TU Delft), Télécom ParisTech, Paris, The Hong Kong University of Science and Technology (HKUST), The University of British Columbia (UBC), Vancouver, The University of Edinburgh, The University of Tokyo, Università degli studi di Parma, Universitat Politècnica de Catalunya (UPC), Barcelona, University College London (UCL)



# ETH and ITET: structure & key figures

# ETH Zürich: Organization and structure



## 16 Departments for Education and Research

Architecture and Civil Engineering	Engineering Sciences	Natural Sciences and Mathematics	System-oriented Natural Sciences	Management and Social Sciences
Architecture	Mechanical and Process Engineering	Mathematics	Earth Sciences	Management, Technology and Economics
Civil, Environmental and Geomatic Engineering	<b>Information Technology and Electrical Engineering</b>	Physics	Environmental Systems Science	Humanities, Social and Political Sciences
	Computer Science	Chemistry and Applied Biosciences	Health Sciences and Technology	
	Materials Science	Biology		
	Biosystems Science and Engineering			

# D-ITET: Size and members

- 11 laboratories (institutes) und 5 independent professorships
- 35 professors (4 women)
- 100 lecturers in total
- ca. 500 scientific and administrative employees
- ca. 400 PhD students
- ca. 1'300 undergraduate, master and exchange students

# 35 Professors of D-ITET



Prof. Luca Benini



Prof. Jürgen Biela



Prof. Helmut Bölcskel



Prof. Colombo Bolognesi



Prof. Gian-Luca Bona



Prof. Florian Dörfler



Prof. Christian M. Franck



Prof. Orçun Göksel



Prof. Benjamin Grewe



Prof. Ulrike Grossner



Prof. Richard Hahnloser



Prof. Qiuting Huang



Prof. Gabriela Hug



Prof. Maryam Kamgarpour



Prof. Johann W. Kolar



Prof. Ender Konukoglu



Prof. Sebastian Kozerke



Prof. Amos Lapidath



Prof. Jürg Leuthold



Prof. Hans-Andrea Loeliger



Prof. Mathieu Luisier



Prof. John Lygeros



Prof. Lukas Novotny



Prof. Klaas P. Prüssmann



Prof. Markus Rudin



Prof. Marco Stampanoni



Prof. Klaas Enno Stephan



Prof. Lothar Thiele



Prof. Luc Van Gool



Prof. Laurent Vanbever



Prof. János Vörös



Prof. Roger P. Wattenhofer



Prof. Armin Wittneben



Prof. Vanessa C. Wood



Prof. Mehmet Fatih Yanik

# Students at ETHZ and D-ITET (2017 figures)

<b>Students at ETH</b>	<b>20'607</b>	
Female Students *	32 %	
International Students **	34 %	
<b>Students at D-ITET</b>	<b>1'769</b>	
Female Students *	18 %	
International Students **	45 %	
<b>Students at bachelor level (years 1 to 3)</b>		
ETH	9'262	* 31% / ** 13%
D-ITET	<b>700</b>	* 14% / ** 18%
<b>Students at master level (years 4 to 5)</b>		
ETH	6'158	* 32% / ** 38%
D-ITET	<b>624</b>	* 22% / ** 53%
Electrical Engineering MSc	377	* 13% / ** 43%
Biomedical Engineering MSc (with D-HEST, D-MAVT and D-PHYS)	93	* 43% / ** 57%
Energy Science & Technology MSc (with D-MAVT and D-MTEC)	101	* 23% / ** 71%
Neural Systems and Computation MSc (with University Zurich)	53	* 45% / ** 85%
<b>Exchange students</b>		
ETH	449	* 36% / ** 94%
<b>D-ITET</b>	<b>45</b>	* 22% / ** 100%
<b>PhD students</b>		
ETH	4'902	* 26% / ** 59%
D-ITET	<b>400</b>	* 18% / ** 71%



# Your most important contacts: who?

ETH / Rectorate

**Student Exchange Office  
(HG F 23.1)**

**General administrative questions**  
e.g. matriculation, address changes,  
residence etc.

Students' association

**AMIV (CAB E 37)**

Social contacts,  
networking



Students

D-ITET / central services

**Student Admin (ETZ H 85)**

**Study specific admin. questions**  
e.g. grades/transcripts, course selection,  
counselling

**Tutors / Lecturers / TA**

Course specific questions, study plan



# Information on the web

- **General Information on studies at ETH**

[www.ethz.ch/students](http://www.ethz.ch/students)

[www.ethz.ch](http://www.ethz.ch) > Studies > Non-degree courses

- **Information on the Department of Electrical Engineering**

[www.ee.ethz.ch](http://www.ee.ethz.ch) > Studies > Student Exchange

- **Course catalogue**

[www.vvz.ethz.ch](http://www.vvz.ethz.ch)

- **Messages from ETH and the Department**

Email on your ETH-Address (accountname@student.ethz.ch)

→ **check your mailbox regularly and read the messages carefully!**

# Students online portal - Reminder

Your administrative duties (on [www.mystudies.ethz.ch](http://www.mystudies.ethz.ch)):

- **Enrollment to courses and exams**
  - Register for each semester until the end of the second week.
  - Register for **courses** (early in the semester; you need to be registered for a course to enroll for an exam)
  - Enroll for **exams** – please enroll during the **3<sup>rd</sup> and 4<sup>th</sup> week** of the semester (withdrawal possible until very late).
  
- **Notify us of your address changes**
  
- **Read your E-Mails**

# Enrolling for courses – Reminder

- **All** courses you wish to **appear** on your transcript must be enrolled for (both the course and the exam).
- Courses without an ETH course number (xxx-xxxx-xx), e.g. certain language courses, will not appear on the transcript.
- If you are here for a **Semester Project** or a **Master Thesis** you might want to enroll for them too.  
However, an official transcript can only be issued for projects respecting the ETH rules for projects/theses (e.g. 6 months, full-time for a 30 cp master thesis).

# Changing the learning agreement

- If your initial course selection has to be changed for any reason (overlapping courses, change of interest, limited number of available spaces) you must not only change enrolments in myStudies but **change the learning agreement** in [Mobility Online](#) too.
- An **invitation** to do so (if needed) will be sent by the student exchange office in the second week of the semester.
- **Verify** your new course selection with me, **before** submitting to Mobility Online.

# Computer infrastructure at ETHZ / D-ITET

- All ETH Computers (e.g. Main Building HG D 11, or ET-Building ETZ D 61.1) require your **n.ethz** password (same as used for myStudies).
- Only ITET students can access the computer infrastructure in the ET-building area, should you encounter a problem, contact [support@ee.ethz.ch](mailto:support@ee.ethz.ch) (IT support office ETF D 106).
- **Project Neptun:** During a short period (until October 1), laptops may be purchased through ETH (see [www.projektneptun.ch](http://www.projektneptun.ch)).
- **IDES:** ETH also offers software at very low cost, some products even for free (see <http://idesnx.ethz.ch>). Remember: the use of non-licensed software is forbidden and subject to criminal prosecution!

# Code of conduct

« At D-ITET, we maintain an inclusive, open and friendly environment, where our students, employees and faculty can thrive and achieve their highest potential, based on mutual respect. To preserve this cordial environment, we do not tolerate misbehavior of any kind, including threats, violence, bullying, sexual harassment, discrimination, or dishonesty in study and in research. »

Prof. Vanessa Wood, Head of Department



# Further information on the Web

- Our principles
- What is “inappropriate behaviour”?
- How to react?
- Contacts / support

The screenshot shows the ETH Zurich D-ITET website. The header includes the ETH Zurich logo and navigation links for Student portal, Alumni association, and D-ITET Intranet. The main navigation bar lists 'The Department' as the active section, with sub-links for News & Events, Research, Studies, Doctoral Studies, Continuing Education, and Explore D-ITET. A sidebar on the left contains a menu with categories like Management and Coordination, Faculty, and Code of Conduct. The main content area features the 'Code of ConducT' section, which states that ETH Zurich and the Department aim for the highest quality in teaching and research with a positive and open atmosphere. It includes a photo of Prof. Vanessa Wood, Head of Department, and a 'Support' section with a 'List of contacts' link.

The screenshot shows a document titled 'Code of Conduct at D-ITET'. The document is from ETH Zurich and the Department of Information Technology and Electrical Engineering. It defines 'INAPPROPRIATE BEHAVIOUR IN STUDY AND RESEARCH' and lists several examples: irregular or excessively incorrect behaviour in study or in research; irregularities in examinations; not giving proper credit to others' ideas; disproportionately less contribution to group projects; inaccurate statements about one's own work or the work of third parties; manipulation of data and results; and dishonesty in IT licenses. It also provides instructions on 'How to react to inappropriate behaviour', including reporting incidents to the person harassing you, documenting the situation, and reporting to the person in charge. The document is signed by the D-ITET department.

# More details?

- **My Office**

Reto Kreuzer, Student Exchange Advisor D-ITET, ETZ H 83

Please send an E-mail to fix an appointment ([reto.kreuzer@ee.ethz.ch](mailto:reto.kreuzer@ee.ethz.ch)).

- **This presentation**

[www.ee.ethz.ch](http://www.ee.ethz.ch) > Studies > Forms and Documents > CurPublished on our website, tomorrow morning: rent Documents

**Enjoy your studies at D-ITET!**

