

Contacts / Information for Students of the MSc Biomedical Engineering

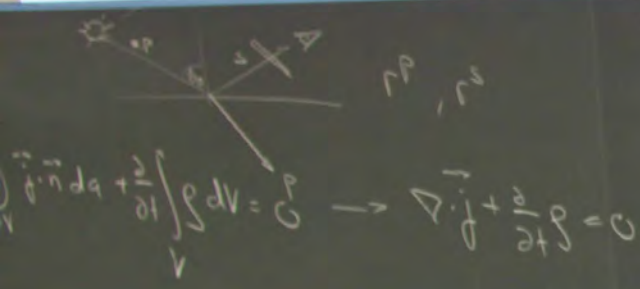
September 20, 2021

Reto Kreuzer, Coordinator of Studies / Student Advisor, D-ITET

Agenda

1. The D-ITET: Your new host department
2. Finding the right contact
3. Courses, exams and credits
4. Useful information

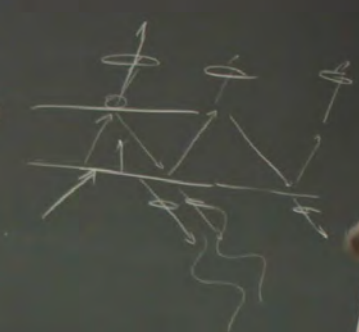
$$\int_{\partial V} (\mathbf{E} \times \mathbf{H}) \cdot \mathbf{n} \, da + \frac{\partial}{\partial t} \int_V \mathbf{E} \cdot \mathbf{D} \, dV = \int_V \mathbf{j} \cdot \mathbf{E} \, dV - \frac{1}{2} \int_V \left[\mathbf{E} \cdot \frac{\partial \mathbf{P}}{\partial t} - \mathbf{P} \cdot \frac{\partial \mathbf{E}}{\partial t} \right] dV - \frac{\mu_0}{2} \int_V \left[\mathbf{H} \cdot \frac{\partial \mathbf{M}}{\partial t} - \mathbf{M} \cdot \frac{\partial \mathbf{H}}{\partial t} \right] dV$$



$$\mathbf{E} \cdot \frac{\partial \mathbf{D}}{\partial t} = \frac{1}{2} \frac{\partial}{\partial t} [\mathbf{D} \cdot \mathbf{E}] + \frac{1}{2} \left[\mathbf{E} \cdot \frac{\partial \mathbf{D}}{\partial t} - \mathbf{D} \cdot \frac{\partial \mathbf{E}}{\partial t} \right]$$

$$\mathbf{D} = \epsilon_0 \mathbf{E} + \mathbf{P}$$

$$= \frac{1}{2} \frac{\partial}{\partial t} [\mathbf{D} \cdot \mathbf{E}] + \frac{1}{2} \left[\mathbf{E} \cdot \frac{\partial \mathbf{P}}{\partial t} - \mathbf{P} \cdot \frac{\partial \mathbf{E}}{\partial t} \right]$$



The D-ITET: Optimal support for over 2000 students

Numbers

BSc	ETH D-ITET	10'355 834	<ul style="list-style-type: none"> • 2'000 students • 40 professors • 50 other lecturers • 450 PhD students • Study administration • AMIV • IT support
MSc	ETH D-ITET Electrical Engineering MSc Biomedical Engineering MSc Energy Science & Technology MSc Quantum Engineering MSc <i>Neural Systems & Comp. MSc (UZH)</i>	7'790 815 457 132 105 61 60	
Exchange	ETH D-ITET	317 38	

Professors: one fourth in the biomedical field



Prof. Luca Benini



Prof. Jürgen Biela



Prof. Helmut Bölcskei



Prof. Colombo Bolognesi



Prof. Florian Dörfler



Prof. Christian M. Franck



Prof. Benjamin Grewe



Prof. Ulrike Grossner



Prof. Richard Hahnloser



Prof. Giuting Huang



Prof. Gabriela Hug



Prof. Giacomo Indiveri



Prof. Taekwang Jang



Prof. Johann W. Kolar



Prof. Ender Konukoglu



Prof. Sebastian Kozerke



Prof. Amos Lapidoth



Prof. Jürg Leuthold



Prof. Hans-Andrea Loeliger



Prof. Mathieu Luisier



Prof. John Lygeros



Prof. Onur Mutul



Prof. Lukas Novotny



Prof. Klaas P. Prüssmann



Prof. Daniel Razansky



Prof. Kaveh Razavi



Prof. Metin Sitti



Prof. Marco Stampanoni



Prof. Klaas Enno Stephan



Prof. Christoph Studer



Prof. Lothar Thiele



Prof. Luc Van Gool



Prof. Laurent Vanbever



Prof. János Vörös



Prof. Roger P. Wattenhofer



Prof. Armin Wittneben



Prof. Vanessa C. Wood



Prof. Mehmet Fatih Yanik



Prof. Maksym Yarema



Prof. Fisher Yu



↑
ETA-Scherrer-
Hörsaal F 5
Hörsäle
E 8 / E 9
Sitzungsraum
E 81

→
Hörsäle
E 6 / E 7
Haupttreppe /
Lifte

←
ETF-Gebäude
Hörsäle
C 1 / E 1

Finding your contacts

Where do I find information on the web?

- **General Information on studies at ETH**

ETH students' website: www.ethz.ch/students

- **Information on the Master in Biomedical Engineering**

D-ITET website: www.master-biomed.ethz.ch

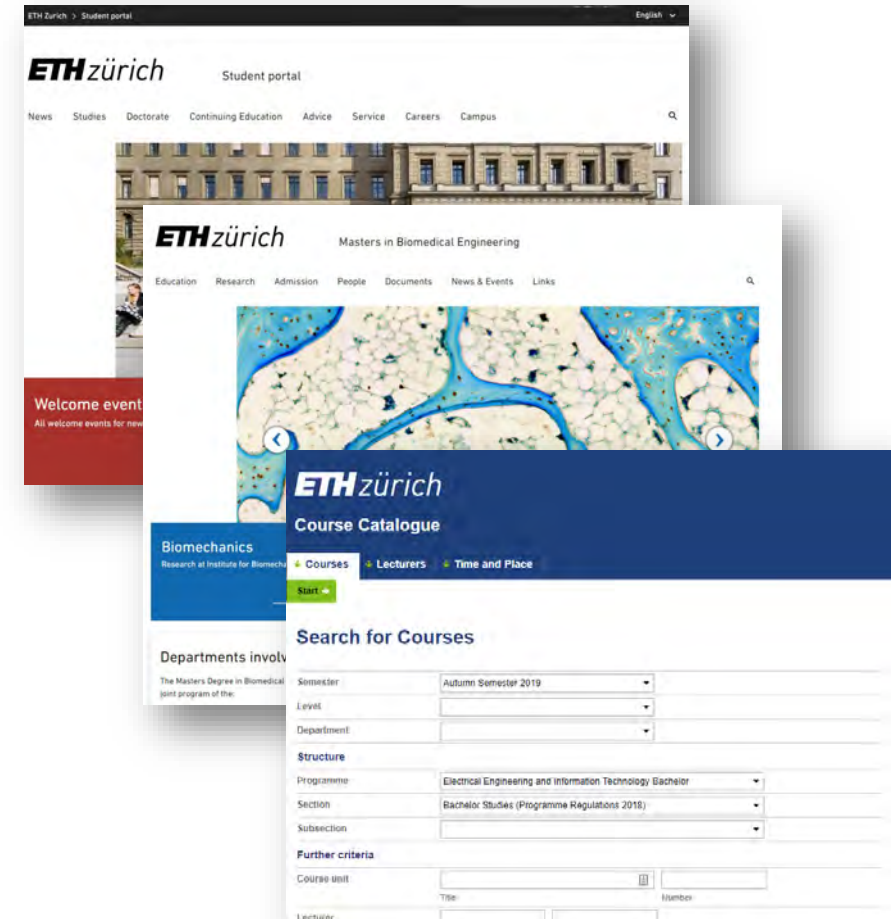
- **Course catalogue**

Online: www.vvz.ethz.ch > Programme > Electrical Engineering (...) Master

- **Messages from ETH and the Department**

Email on your ETH-Address (username@student.ethz.ch)

→ **check your mailbox regularly and read the messages carefully!**



Your most important contacts at ETH and the D-ITET

ETH / Rectorate

Registrar's Office (HG F 19)

General administrative questions
e.g. matriculation, address changes,
residence etc.

Students' association

AMIV (CAB E 37)

Social contacts,
networking

D-ITET / central services

Student Admin (ETZ H 85)

Study specific admin. questions
e.g. grades/transcripts, waivers, counselling

Tutors / Lecturers / TA

Course specific questions, study plan



Your contacts at the D-ITET



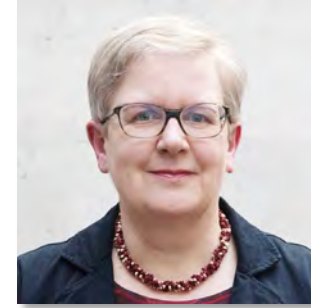
Prof. Sebastian Kozerke
Director of studies

ETZ F 94
+41 44 632 53 25
kozerke@biomed.ee.ethz.ch



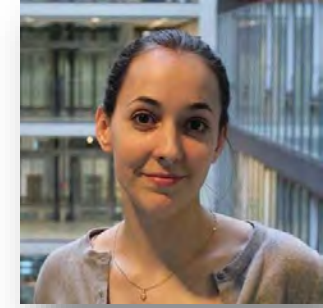
Reto Kreuzer
Head of Student Administration /
Student advisor

ETZ H 83
+41 44 632 08 15
info@ee.ethz.ch



Doris Döbeli
Student Administration

ETZ H 85
+41 44 632 50 03
info@ee.ethz.ch



Audrey Djouadi
Student exchange advisor

ETZ H 87
+41 44 632 89 57
info@ee.ethz.ch



Administrative matters

myStudies? Do not forget to...

- **Enroll for semesters, courses and exams**
 - Register for each semester until the end of the second week.
 - Register for **courses** (early in the semester; you need to be registered for a course to enroll for an exam)
 - Submit the **learning agreement** (until the **end of the 4th week**).
 - Enroll for **exams** – please enroll during the **3rd and 4th week** of the semester (withdrawal possible until very late).
- **Notify us of your address changes**
- **Read your E-Mails**

Enrolling for courses


- All courses you wish to **count** towards your Master **Diploma** must be **enrolled** for (both the course and the exam);
- Only **courses agreed upon** by your **track advisor** will count for the degree, other courses go on a separate sheet, attached to the final transcript.
- In particular, do not forget to enroll for the **Semester Projects** and the **Master Thesis** (special section in myStudies "Projects/Papers/Theses).

Performance Assessments

- Three types of performance assessments:
 - **Session examination** (Winter session: January/February – Summer session: August), **Attention to registration/deregistration deadlines**
 - **End-of-semester examination (2 weeks before end of lectures until 2 weeks after end of lectures)**, **Attention to registration/deregistration deadlines**
 - Graded/ungraded **semester performance** (e.g. semester project or internship in industry (performance during semester), **Attention minimum/maximum allowed time/deadlines**
- Passed exams **cannot be re-taken**, failed exams can be re-taken once!
- Special rules may apply regarding **allowed (written) aids**:
 - Course catalogue > see "Performance assessment"
 - Personal exam schedule in myStudies (for session examinations)
 - Lecturer/examiner

Your studies are subject to regulation

- **Study regulations** (mostly available in German only)
www.rechtssammlung.ethz.ch (complete collection, German)
www.ee.ethz.ch > Studies > Forms and Documents (MSc EEIT regulations in English)
- **Rector's Directives** (some available in German only)
www.ethz.ch/students > Studies > Legal basis > Directives Collection
- **Questions?**
International students, please contact Ms Annina Wanner at the Rectorate (HG F 22.3) or D-ITET's Study Administration (ETZ H 85) for help on regulations.



Information

Useful information

Counselling at ETH and the D-ITET

- **Course selection:** your track advisor
- **Studies at D-ITET** (deadlines, failures at examinations etc.): the coordinator of studies
- **General questions regarding your arrival at ETH:** the [international student support](#)
- **Time management / motivation:** ETH [student coaching](#)
- **Difficult phases / personal problems:** the [psychological counselling service](#) (free of charge and confidential)

Computer infrastructure at ETHZ / D-ITET

- All ETH Computers (e.g. Main Building HG D 11, or ET-Building ETZ D 61.1) require your **n.ethz** password (same as used for myStudies).
- Only ITET students can access the computer infrastructure in the ET-building area, should you encounter a problem, contact support@ee.ethz.ch (IT support office ETF D 106).
- **Project Neptun:** During a short period (until October 4), laptops may be purchased through ETH (see www.projektneptun.ch).
- **IDES:** ETH also offers software at very low cost, some products even for free (see <http://idesnx.ethz.ch>). Remember: the use of non-licensed software is forbidden and subject to criminal prosecution!

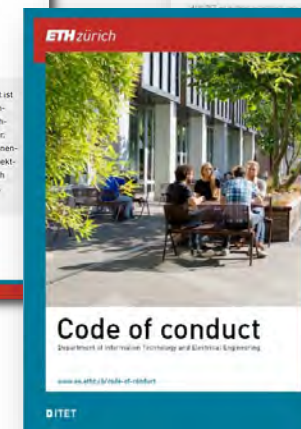
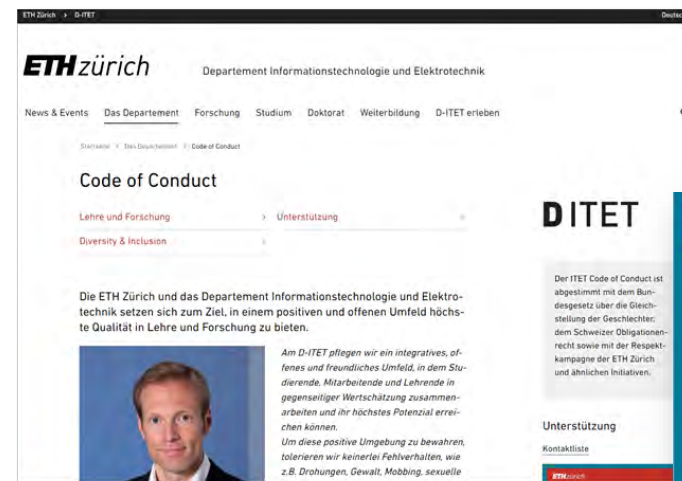
Code of conduct

« At D-ITET, we maintain an inclusive, open and friendly environment, where our students, employees and faculty can thrive and achieve their highest potential, based on mutual respect. To preserve this cordial environment, we do not tolerate misbehavior of any kind, including threats, violence, bullying, sexual harassment, discrimination, or dishonesty in study and in research. »

Prof. Klaas Enno Stephan, Head of Department

Further information on the Web:

- Our principles
- What is “inappropriate behavior”?
- How to react?
- Contacts / support



Reminders

- Make sure that you always have your vaccination or test **certificate** and a personal identification document (e.g., student card) on you.
- **Scout for good spots** on the campus for WiFi and seating: some courses may be online, followed by presence-based teaching immediately after.
- **Follow instructions** of lecturers, especially re. certificates, keeping distances, and masks.

More details?

- **My Office**

Reto Kreuzer, Study Coordinator D-ITET, ETZ H 83

Please send an E-mail to fix an appointment (reto.kreuzer@ee.ethz.ch)

- **This presentation**

Available tomorrow morning on www.ee.ethz.ch > Studies > Forms and Documents

Enjoy your studies at ETH!

