

# Contacts / Information for Exchange Students at the Department of Information Technology and Electrical Engineering (D-ITET)

September 18, 2023

Audrey Djouadi / Reto Kreuzer

Exchange Student Advisors, D-ITET

# Exchange Studies at D-ITET

## A very international programme

Argentina, Australia, Belgium, Bosnia und Herzegovina, Canada, China, France, Germany, Greece, India, Ireland, Italy, Japan, Netherlands, Norway, Singapore, South Korea, Spain, Sweden, Switzerland, Thailand, United Kingdom, United States

## Great variety of schools

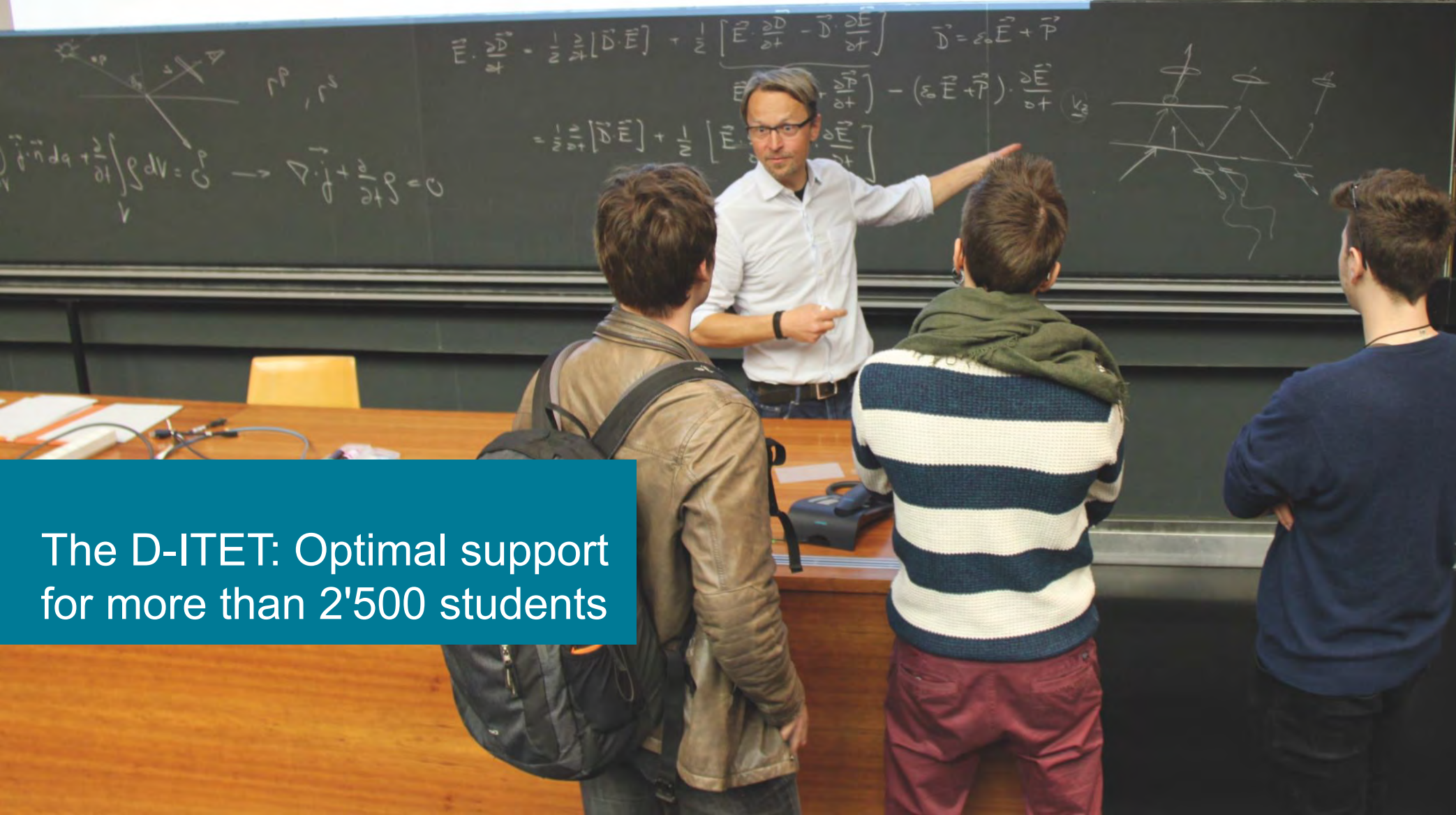
Danmarks Tekniske Universitet - Lyngby, Imperial College London, Indian Institute of Technology Bombay, Katholieke Universiteit Leuven, Kungliga Tekniska högskolan, Massachusetts Institute of Technology, National University of Singapore, Norges teknisk-naturvitenskaplige universitet, Politecnico di Milano, Rheinisch-Westfälische Technische Hochschule Aachen, Seoul National University, Technische Universität Wien, Technische Universiteit Delft, Télécom Paris - Institut Polytechnique de Paris, Università degli studi di Padova, Universitat Politècnica de Catalunya, Universitat Politècnica de València, University of British Columbia, Trinity College, University of London, University of Melbourne, University of Sydney, University of Tokyo

# Agenda

1. The D-ITET: Your host department
2. Finding the right contact
3. Administrative matters
4. Useful information
5. Questions?

$$\int_{\partial V} (\mathbf{E} \times \mathbf{H}) \cdot \mathbf{n} \, d\mathbf{a} + \frac{\partial}{\partial t} \int_V 2[\dots]$$

$$-\int_V \mathbf{j} \cdot \mathbf{E} \, dV - \frac{1}{2} \int_V \left[ \mathbf{E} \cdot \frac{\partial \mathbf{P}}{\partial t} - \mathbf{P} \cdot \frac{\partial \mathbf{E}}{\partial t} \right] dV - \frac{\mu_0}{2} \int_V \left[ \mathbf{H} \cdot \frac{\partial \mathbf{M}}{\partial t} - \mathbf{M} \cdot \frac{\partial \mathbf{H}}{\partial t} \right] dV$$



The D-ITET: Optimal support  
for more than 2'500 students



# Professors



Prof. Luca Benini



Prof. Jürgen Biela



Prof. Helmut Bölcskei



Prof. Colombo Bolognesi



Prof. Florian Dörfler



Prof. Christian M. Franck



Prof. Benjamin Grewe



Prof. Ulrike Grossner



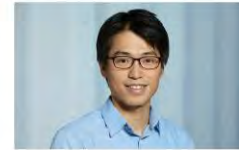
Prof. Richard Hahnloser



Prof. Gabriela Hug



Prof. Giacomo Indiveri



Prof. Taekwang Jang



Prof. Lana Josipovic



Prof. Johann W. Kolar



Prof. Ender Konukoglu



Prof. Sebastian Kozerke



Prof. Amos Lapidot



Prof. Jürg Leuthold



Prof. Hans-Andrea Loeliger



Prof. Mathieu Luisier



Prof. John Lygeros



Prof. Valerio Mante



Prof. Onur Mutlu



Prof. Lukas Novotny



Prof. Mickaël Perrin



Prof. Klaas P. Prüssmann



Prof. Daniel Razansky



Prof. Kaveh Razavi



Prof. Metin Sitti



Prof. Marco Stamparoni



Prof. Klaas Enno Stephan



Prof. Christoph Studer



Prof. Luc Van Gool



Prof. Laurent Vanbever



Prof. János Vörös



Prof. Hua Wang



Prof. Roger P. Wattenhofer



Prof. Vanessa C. Wood



Prof. Mehmet Fatih Yanik



Prof. Maksym Yarema



Prof. Fisher Yu

# Numbers

<b>BSc</b>	ETH D-ITET	10'665 786	<ul style="list-style-type: none"> <li>• 41 professors</li> <li>• 50+ other lecturers</li> <li>• 2500 students</li> <li>• 500 PhD students</li> <li>• Study administration</li> <li>• AMIV (incl. LIMES)</li> <li>• IT support</li> </ul>
<b>MSc</b>	ETH D-ITET Electrical Engineering MSc Biomedical Engineering MSc Energy Science & Technology MSc Quantum Engineering MSc <i>Neural Systems &amp; Comp. MSc (UZH)</i>	8'737 1'031 565 194 105 115 52	
<b>Exchange</b>	ETH D-ITET	386 49	



# Finding your contacts

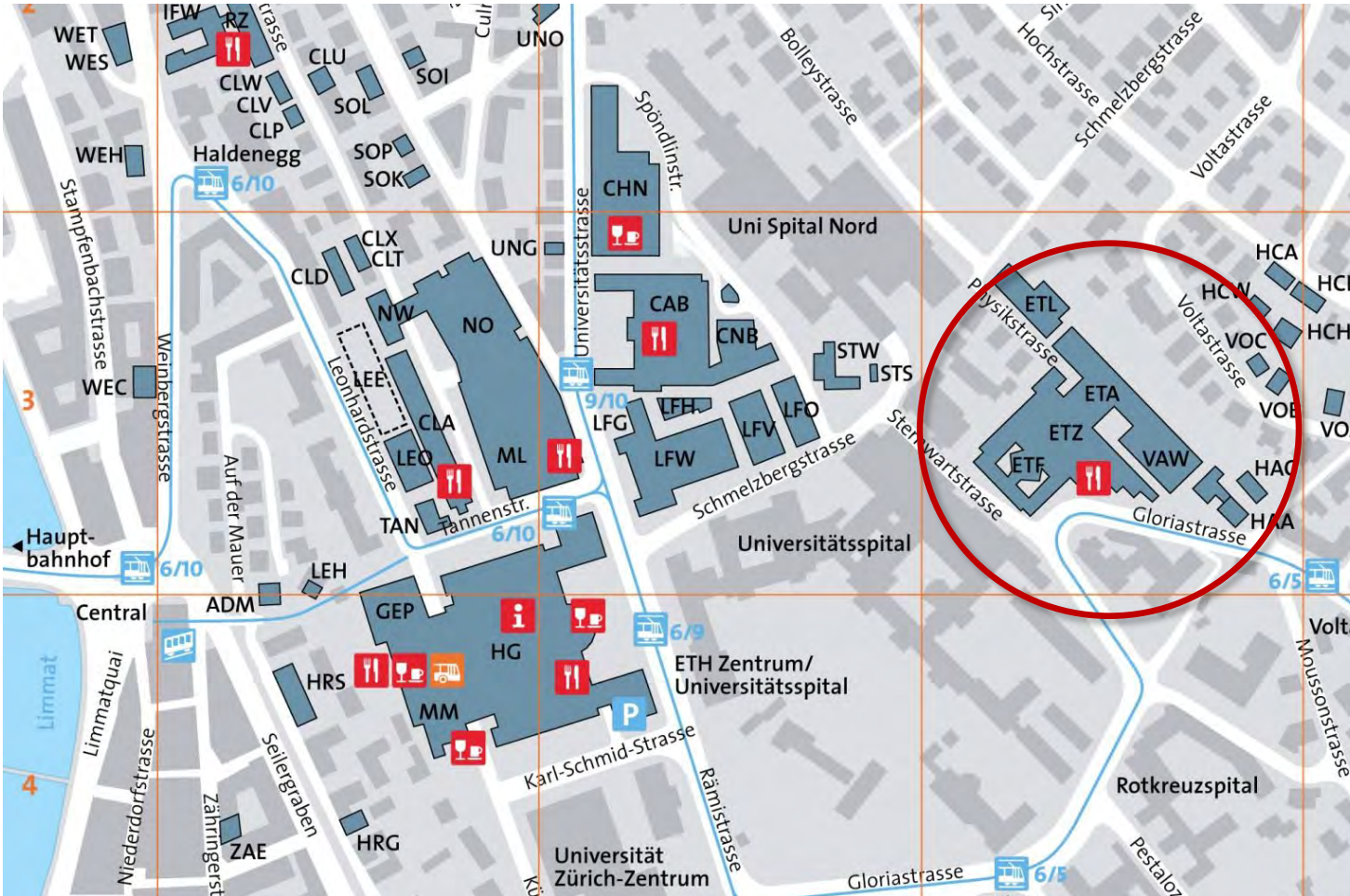
↑  
ETA-Scherrer-  
Hörsaal F 5  
Hörsäle  
E 8 / E 9  
Sitzungsraum  
E 81

→  
Hörsäle  
E 6 / E 7  
Haupttreppe /  
Lifte

←  
ETF-Gebäude  
Hörsäle  
C 1 / E 1



# Map of ETH and D-ITET



<https://ethz.ch/staffnet/en/service/rooms-and-buildings/building-orientation.html>



# Where do I find information on the web?

- **General Information on studies at ETH**

ETH students' website: [www.ethz.ch/students](http://www.ethz.ch/students)

- **Information on D-ITET**

[D-ITET website](#): Studies > Student Exchange > Studying at D-ITET

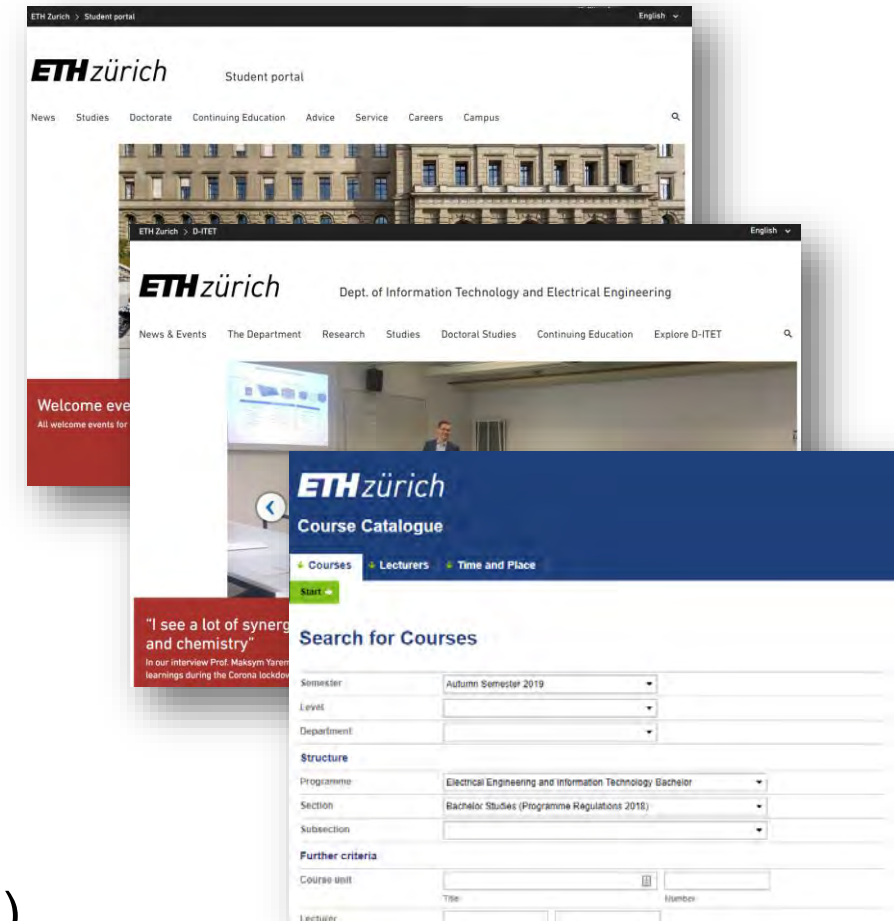
- **Course catalogue**

Online: [www.vvz.ethz.ch](http://www.vvz.ethz.ch)

- **Messages from ETH and the Department**

Email on your ETH-Address ([username@student.ethz.ch](mailto:username@student.ethz.ch))

→ **check your mailbox regularly and read the messages carefully!**



# Your most important contacts at ETH and the D-ITET

## ETH / Rectorate

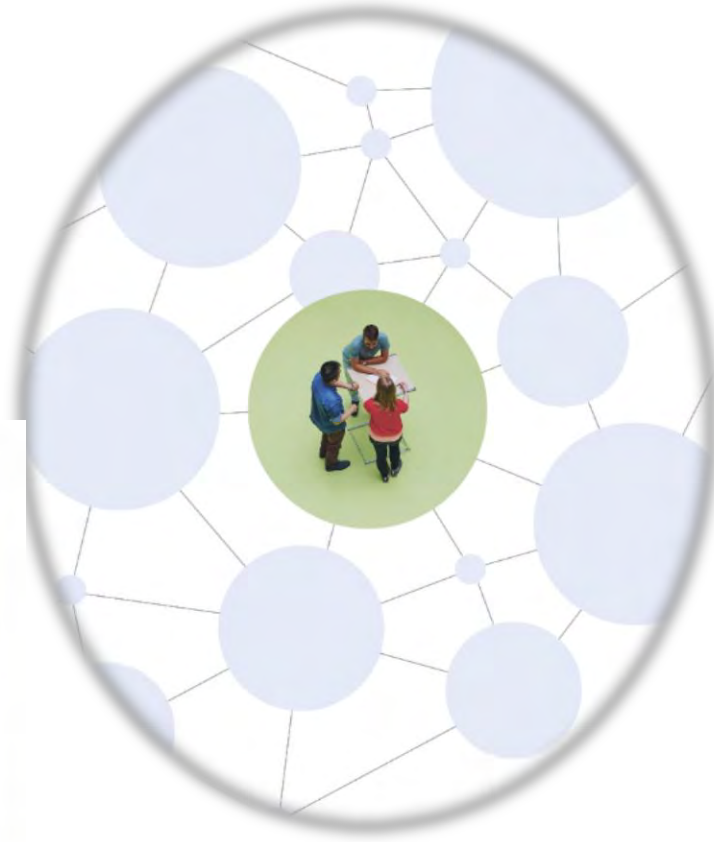
Student exchange office  
(HG F 23.1)

e.g. matriculation, address changes,  
residence etc.

## Students' association

AMIV (CAB E 37)

Social contacts,  
networking



## D-ITET / central services

Student Admin (ETZ H 85)

Study specific admin. questions  
e.g. grades/transcripts, waivers, counselling

## Tutors / Lecturers / TA

Course specific questions, study plan

# Your contacts at the D-ITET



Andrea Salow / Tali Scheiner

Student Administration

ETZ H 85

+41 44 632 50 03

[info@ee.ethz.ch](mailto:info@ee.ethz.ch)



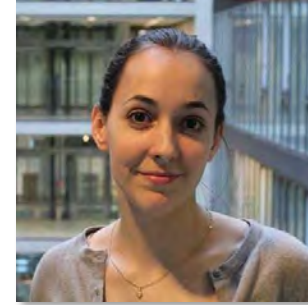
Reto Kreuzer

Head of Student Administration /  
Student exchange advisor

ETZ H 83

+41 44 632 08 15

[info@ee.ethz.ch](mailto:info@ee.ethz.ch)



Audrey Djouadi

Course scheduling /  
Student exchange advisor

ETZ H 87

+41 44 632 89 57

[info@ee.ethz.ch](mailto:info@ee.ethz.ch)





## Administrative matters

# Enrolling for courses – Reminder

- **You have to be enrolled for all** courses you wish to **appear** on your **transcript** (both the course and the exam).
- Courses without an ETH course number (xxx-xxxx-xx), e.g., certain language courses, might not appear on the transcript.
- If you are here for a **project** or a **master thesis** you might want to enroll for those too. A variety of projects, starting at 5 credits are available (900-xxxx-xx).

# The rule of 2/3

- **What is the Rule of 2/3?**

Students need to take 2/3 of their courses from the department they have been admitted to.

- **Which courses can I take?**

For students of the D-ITET these are courses starting with "227-", some exceptions are being made for students coming from interdisciplinary programs – e.g., Biomedical Engineering.

- **Why does this rule exist?**

Each department has its own quota for admissions, we cannot permit for circumvention of this distribution by allowing study plans that are mainly based on other departments course offers!




# Changing the study plan

- If your initial course selection has to be changed for any reason (overlapping courses, change of interest, limited number of available spaces) you must not only change enrolments in myStudies but **change the study plan** in [Mobility Online](#) too.
- An **invitation** to do so (if needed) will be sent by the student exchange office in the second week of the semester.
- **Verify** your new course selection with us, **before** submitting it to Mobility Online.

# Performance Assessments

Watch the Video on "Exams at ETH: Types, Registration & Deadlines" published under [www.ethz.ch/how-to-eth](http://www.ethz.ch/how-to-eth)

- There are 3 types of performance assessments
  - **Session examination** – Winter session: January/February – Summer session: August, **Attention to registration/deregistration deadlines**
  - **End-of-semester examination** – 2 weeks before end of lectures until 2 weeks after end of lectures, **Attention to registration/deregistration deadlines**
  - Graded/ungraded **semester performance** – e.g., semester project or internship in industry, courses with performance assessment during semester, **Attention min./max. allowed time/deadlines**
- Passed exams **cannot be re-taken**, you can **re-sit a failed exam once**
- **Special rules may apply** regarding allowed (written) aids see the course catalogue – under *Performance assessment* –, look at your **personal exam schedule** in myStudies for session exams, and make sure to ask your lecturer/examiner



*Information*

Useful information



# Counselling at ETH and the D-ITET

- Course selection ? → Email to [exchange@ee.ethz.ch](mailto:exchange@ee.ethz.ch)
- General questions regarding your arrival at ETH ? → Contact [student exchange office](#)
- Time management / motivation ? → ETH [student coaching](#)
- Difficult phases / personal problems ? → [psychological counselling service](#) (free of charge and confidential)

# Computer infrastructure at ETHZ / D-ITET

- All public ETH-computers, e.g., Main Building HG D 11, or ET-Building ETZ D 61.1, require your **n.ethz** password, same as used for myStudies
- Only ITET students can access the computer infrastructure in the ET-building area, should you encounter a problem, contact [support@ee.ethz.ch](mailto:support@ee.ethz.ch), IT support office ETF D 106
- [Project Neptune](#) – during a short period (until October 3), laptops and tablet computers may be purchased through ETH at interesting prices
- [IDES](#) – ETH also offers software at very low cost, some products even for free.  
Remember: the use of non-licensed software is forbidden and subject to prosecution!

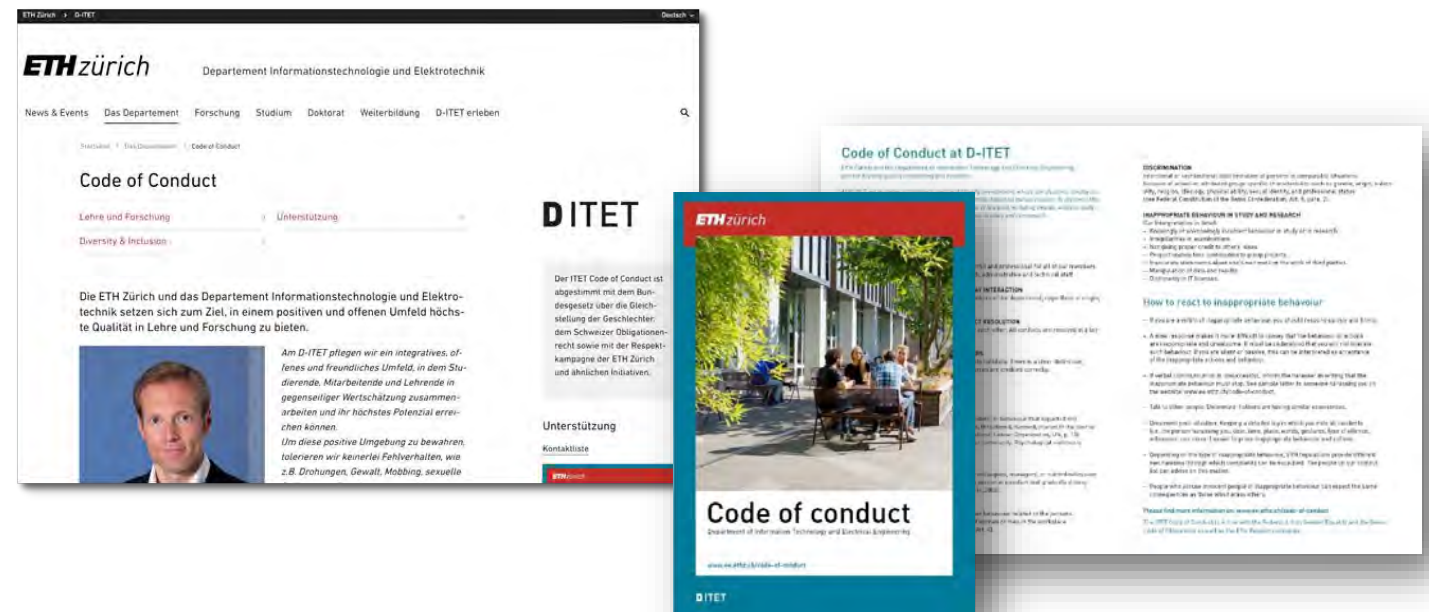
# Code of conduct

« At D-ITET, we maintain an inclusive, open and friendly environment, where our students, employees and faculty can thrive and achieve their highest potential, based on mutual respect. To preserve this cordial environment, we do not tolerate misbehavior of any kind, including threats, violence, bullying, sexual harassment, discrimination, or dishonesty in study and in research. »

Prof. Juerg Leuthold, Head of Department

## Further information on the Web:

- Our principles
- What is “inappropriate behavior”?
- How to react?
- Contacts / support





# More details?

- **Our Offices**

Reto Kreuzer (ETZ H 83) or Audrey Djouadi (ETZ H 87)

Please send an E-mail to fix an appointment ([exchange@ee.ethz.ch](mailto:exchange@ee.ethz.ch))

- **This presentation**

Available tomorrow morning on [www.ee.ethz.ch](http://www.ee.ethz.ch) > Studies > Forms and Documents

# Enjoy your studies at ETH!





Zürich, September 18<sup>th</sup> 2023

amiv

Welcome Day







High School Politics



Events

**What we do**



Study Documents





High School Politics

# Representation of students' interests

Questions or complaints to  
[info@amiv.ethz.ch](mailto:info@amiv.ethz.ch)



# Offers and Activities

- Theater
- Poker- / Jass tournament
- Sushi-Night
- Graduationparty
- Skiweekend
- Lasertag
- Beachvolleyball tournament

## Events







Quick Filter



Select department and semester

RESET

Department



Semester



D-ITET	1	2	3	4	5+
D-MAVT	1	2	3	4	5+
other	1	2	3	4	5+

Study Documents

[amiv.ethz.ch](https://amiv.ethz.ch)

More than 1000 summaries,  
old exams, etc.

Oral exams

Written recollections of  
oral exams

extremely useful when  
preparing for an exam

Oral exams?

Find protocols on  
the amiv website!

Submit one yourself  
and get a cash reward.  
More information on  
[amiv.ethz.ch](https://amiv.ethz.ch)



 **amiv**  **vsoeth**

Fachverein  
Verband der  
Studierenden  
an der ETH



# Lounge



- Coffee machine
- Beer vending machine
- Table football
- Billiard table
- Mate tea machine

- Couches
- TV with game console
- microwaves



# AMIV committees



Bastli

LIMES

WOMEN\* IN ELECTRICAL  
AND MECHANICAL ENGINEERING  
AT ETH ZURICH

plitz

die Fachzeitschrift des amiv an der  
ETH



eeStec

ELECTRICAL ENGINEERING STUDENTS'  
EUROPEAN ASSOCIATION

# AMIV Kontakt.23:

## The Job Fair for Engineers!

**CLA & LEE Buildings**  
**10. & 11.10.2023, 11:00–17:00**



57 companies  
2 days  
Free CV-checks  
Free photo shoots  
Presentations &  
Workshops





# AMIV Kontakt.23:

**Presentations and Workshops  
with free Apéros!**

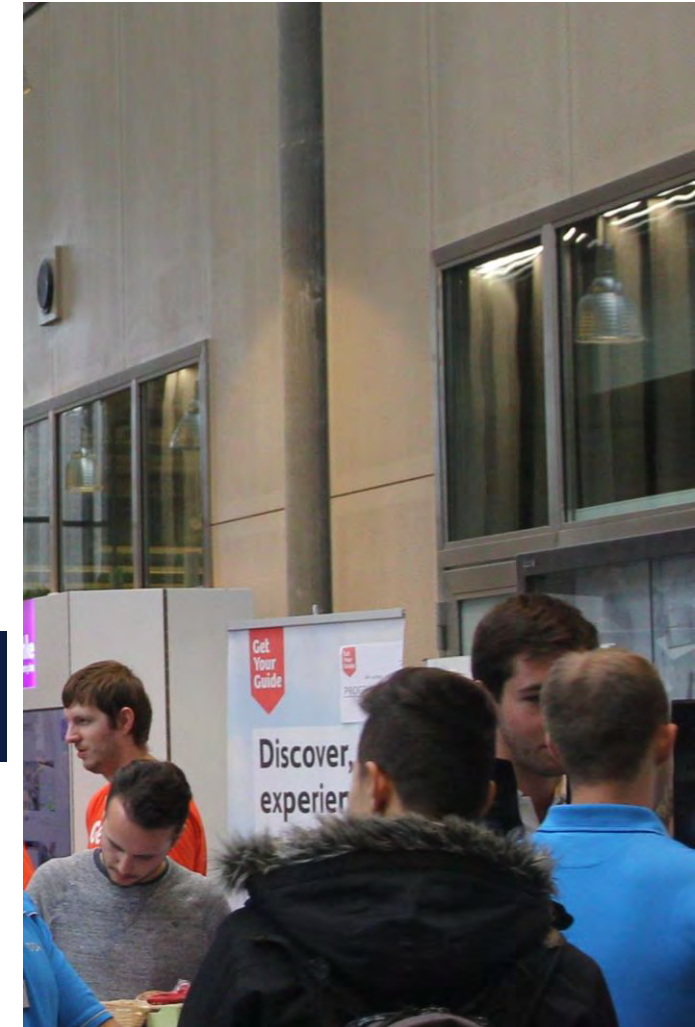
**Lateral entry into Software Engineering**

**Tuesday, 27.09.2023, 18:15, HG E 5**

**Career Misconceptions**

**Thursday, 04.10.2023, 17:15, HG E 5**

**Register on [amiv.ethz.ch/events](https://amiv.ethz.ch/events)**





# Join?

**veth**  
member

Teams

Board member

## Voluntary contributions for the Autumn Semester 2019

Note: If membership is selected, the personal and address data required for member administration and other club activities will be forwarded to the respective club.

	Yes	No
<a href="#">Solidarity fund</a> for foreign students (CHF 5.-)	<input checked="" type="radio"/>	<input type="radio"/>
<a href="#">SOSETH</a> membership (CHF 5.-)	<input checked="" type="radio"/>	<input type="radio"/>
<a href="#">VSETH</a> membership (CHF 10.-; for doctoral students CHF 35.-)	<input checked="" type="radio"/>	<input type="radio"/>
		<input type="button" value="Save"/>

- 1 **Ersti-Apéro**  
Today from 1 pm  
CAB building
- 2 **Ersti-Rallye**  
Wednesday, Sep 20
- 3 **Masterweekend**  
Sign-up today 6pm  
Sep 29 – Oct 1



**More information on [amiv.ethz.ch](https://amiv.ethz.ch)**

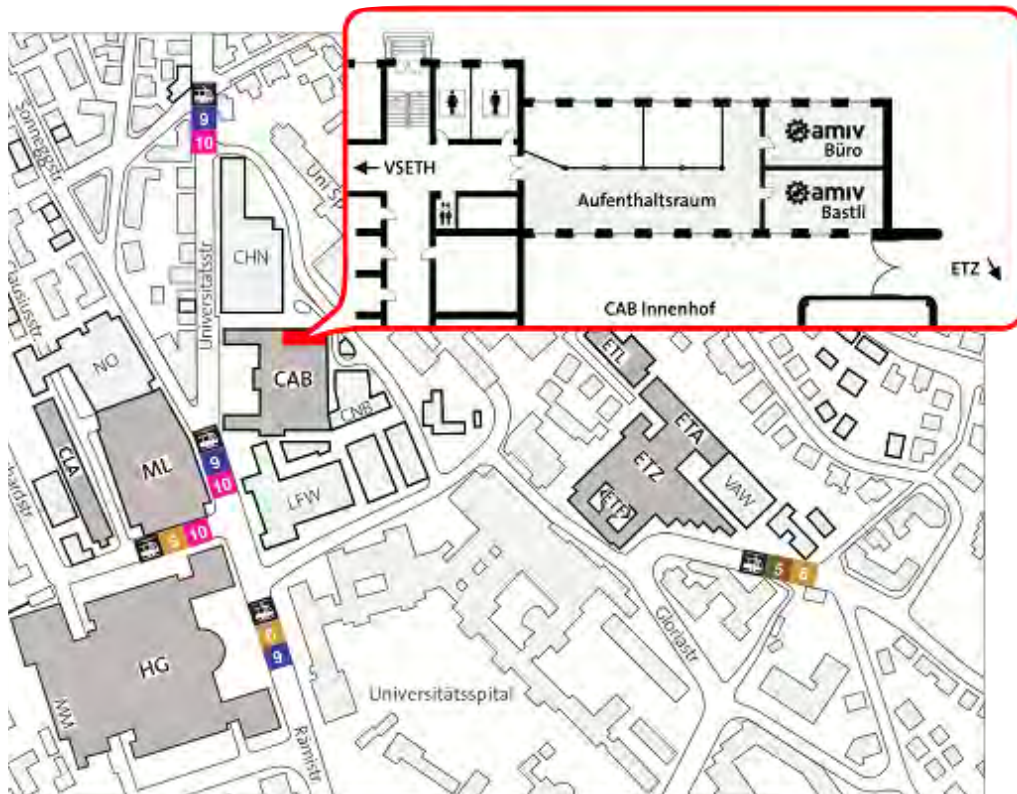


# Questions?





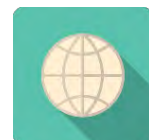
**AMIV and der ETH**  
**CAB E37**  
**Universitätstrasse 6**  
**8092 Zürich**



@amiv\_eth



facebook.com/AMIV.ETHZ



www.amiv.ch



info@amiv.ethz.ch

**vsoeth**

Welcome Day 2023





# LINES

WOMEN\* IN ELECTRICAL AND MECHANICAL  
ENGINEERING AT ETH ZURICH



# About us

LIMES is the women\* student committee of AMIV, the association for students studying Information Technology and Electrical Engineering (D-ITET) and Mechanical and Process Engineering (D-MAVT).

\*Our use of the term "women" includes all individuals who identify as women, non-binary, inter- and transgender and face gender-based discrimination.





# Our mission

## Insight

We equip our members with invaluable industry insights prior to their completion of studies.

## Network

We connect women\* engineering students, fostering a strong support network that goes beyond their academic pursuits.



## Inspire

We seek to inspire high school students to pursue technical career paths.



# What we do



Events



Projects



Meetings



# Events

- Women\*'s Evening
- LIMES Talk
- Regulars' table (Stammtisch)
- Summer Cocktail Night
- LIMES Cup - A Soccer Tournament
- Excursions
- Workshops
- Hackathons
- Team Events
- Schülerinnen\*tag
- .. & many more!







# Upcoming Events 2023

**20.09.** Ersti-Rallye LIMES Booth  
For all new joiners

**28.09.** Welcome Aperitif  
Grab your free welcome drink!

**30.09.** Workshop w/ ABB @WeTechTogether  
Join our workshop at the WeTechTogether Conference in Technopark Zurich

**04.10.** Mentee-Mentor Dinner D-ITET  
Spaghetti Dinner for D-ITET exclusive!

**TBA** LIMES goes Google  
Let's visit the Google office together!

**26.10.** Workshop w/ FemmelInvest  
Invest in yourself. In your financial education. In your future.

**24.11.** Schülerinnen\*tag  
Inspire the next generation!

**30.11.** Sensor-Challenge w/ Sensirion  
Compete against other students at the sensor challenge!

**TBA** Dinner Event w/ Belimo & ETH Juniors  
Evening with keynotes, talent acquisition scouts, drinks and dinner

# Projects



In total, 23 dispensers which dispense free tampons and pads are installed in women's and gender-neutral toilets on ETH campus.

The aim of the project is help normalize and eliminate the stigma surrounding the subject of menstruation.



# Meetings

Meetings are held bi-weekly during the semester on ETH campus.

You can simply come to one of our meetings and learn more about what we do  
- no strings attached!

The meeting schedule can be found on our website and social media.  
Snacks are provided.





# Become a member

Becoming a LIMES member is easy! If you are interested in joining our organization, write us or simply attend our next meeting to learn more. 😊

# Stay updated



<https://limes.ethz.ch>



@limes.eth



company/limes-eth



# Any questions?

Send an email to:  
[limes@amiv.ethz.ch](mailto:limes@amiv.ethz.ch)

