



Welcome

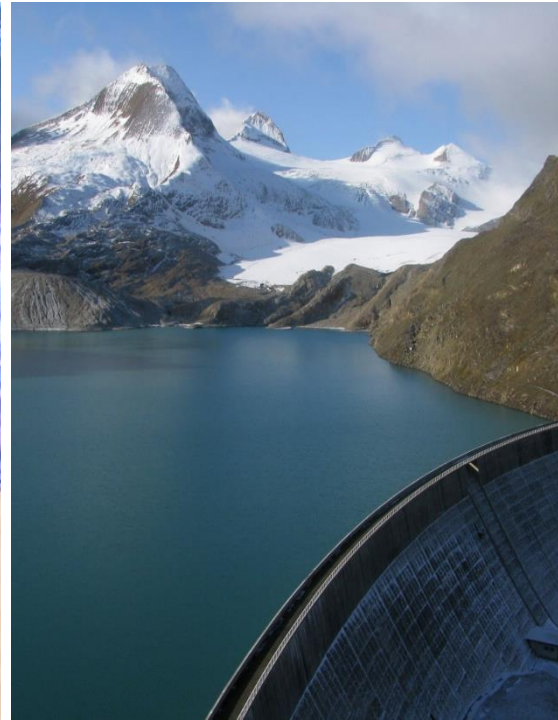
Professor Detlef Günther
Vice President for Research
6 May 2022, Zürich



ETH Zürich's main focus areas in teaching and research



Data Science & Cyber-Physical Systems



Energy, Climate & Resources










Health Sciences & Medicine

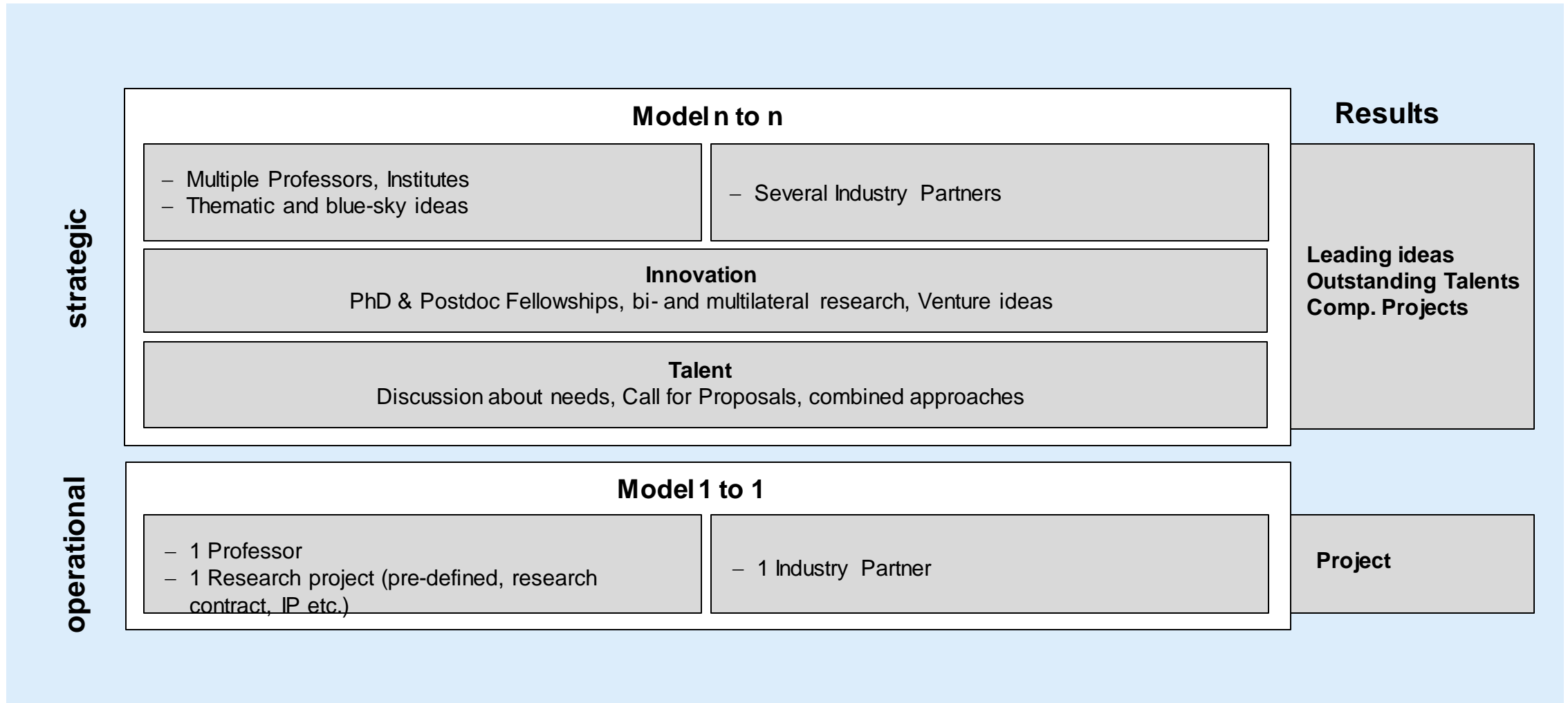


Manufacturing Technology

Partnerships for research and innovation

Integrative Risk Management	Mobility	Sustainable Construction
		
Media Technology	Electrical Energy	Manufacturing & Materials
		
World Food Systems	Information Security	Health, Reha
		
Talents & Pioneers		Robotics, Design++
		

Industry Partnership Models



ETH Mobility Initiative from 2018 until today

- 2018: ETH Zürich and SBB launch the Mobility Initiative at WEF in Davos with Federal Councillor Doris Leuthard; launch of Future Mobility research program with 1st Call for proposals
 - 2019: Siemens Mobility and a private donor join; 2nd Call for proposals
 - 2020: Amag joins; 3rd Call for proposals
 - 2021: 4th Call for proposals
 - 2022: 5th Call for proposals (open until 13 June)
-
- 18 projects funded so far, most of them still ongoing; see overview at the poster exhibition
 - Current donations of 18 Mio. CHF over 10 years from Mobility Initiative partners, to be matched with equivalent funds from ETH Zürich

MAS | CAS ETH in Future Transport Systems

- Continuing education program developed within the framework of the Swiss Competence Center for Energy Research in Mobility (www.sccer-mobility.ch)
- It imparts knowledge and skills to develop marketable products and services that promote sustainable and resource-efficient future mobility
- Master of Advanced Studies (MAS) consists of three interdisciplinary Certificates of Advanced Studies (CAS):
 - System Aspects
 - Technology Potentials
 - New Business Models

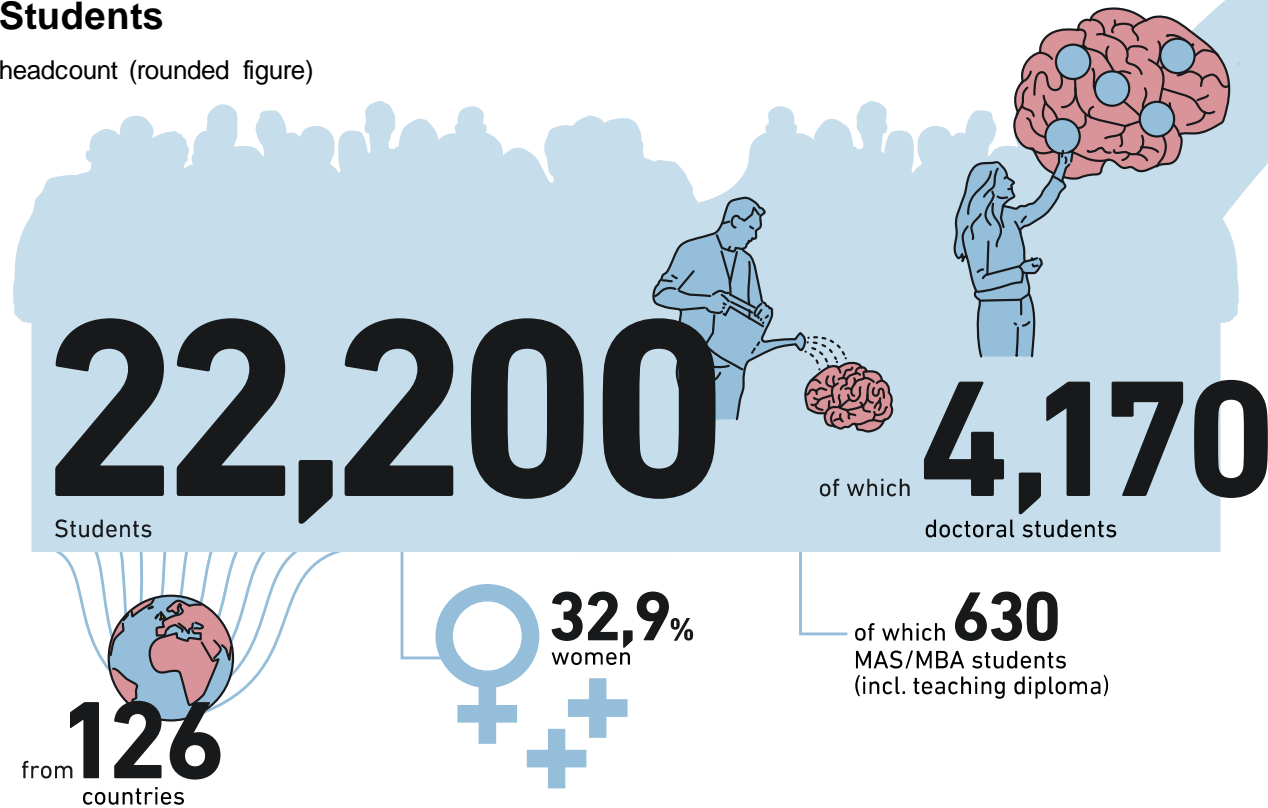


Additional slides

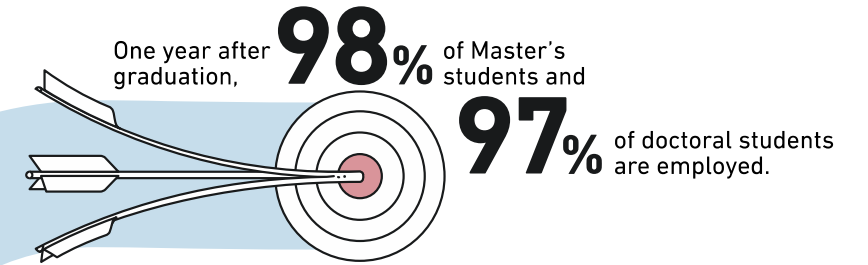
ETH Zurich in figures

Students

headcount (rounded figure)

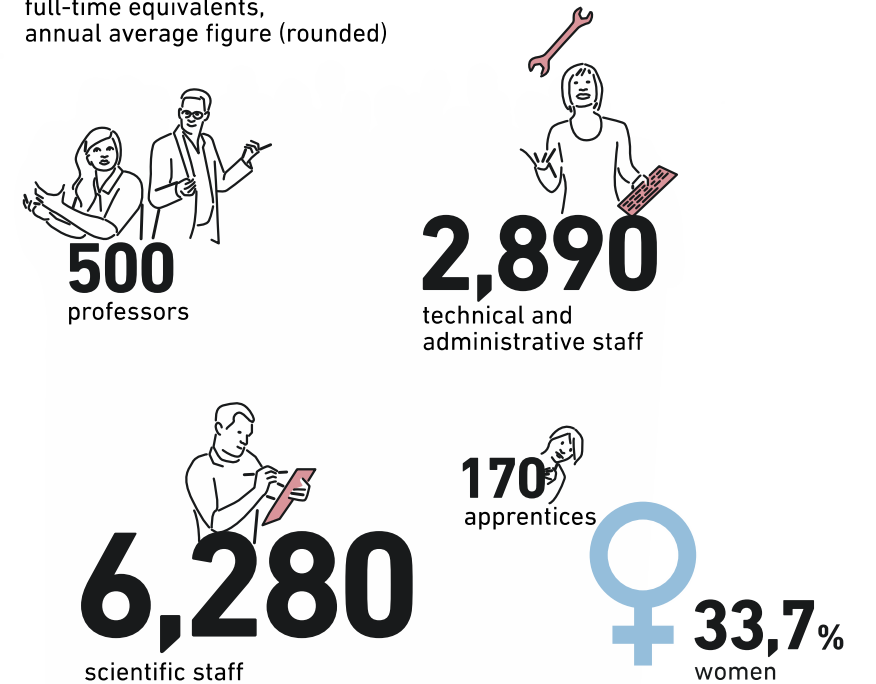


8 QS-Ranking
13 THE-Ranking
19 ARWU-Ranking



Staff headcount

full-time equivalents, annual average figure (rounded)



Successful knowledge transfer



600+ Research collaborations per year

100+ Patent applications per year

30+ Spin-offs per year

70+ Strategic industry partners

40+ Licensing agreements per year



- ETH Zürich can and should substantially contribute to further shaping the future mobility system
- The new Center at ETH Zürich aims at addressing critical challenges to achieving a sustainable Mobility from an interdisciplinary perspective
- CSFM hosts and expands the ETH Mobility Initiative