

ARGOS

Mechatronic Mouse Enclosures for Machine Vision Based Welfare Monitoring



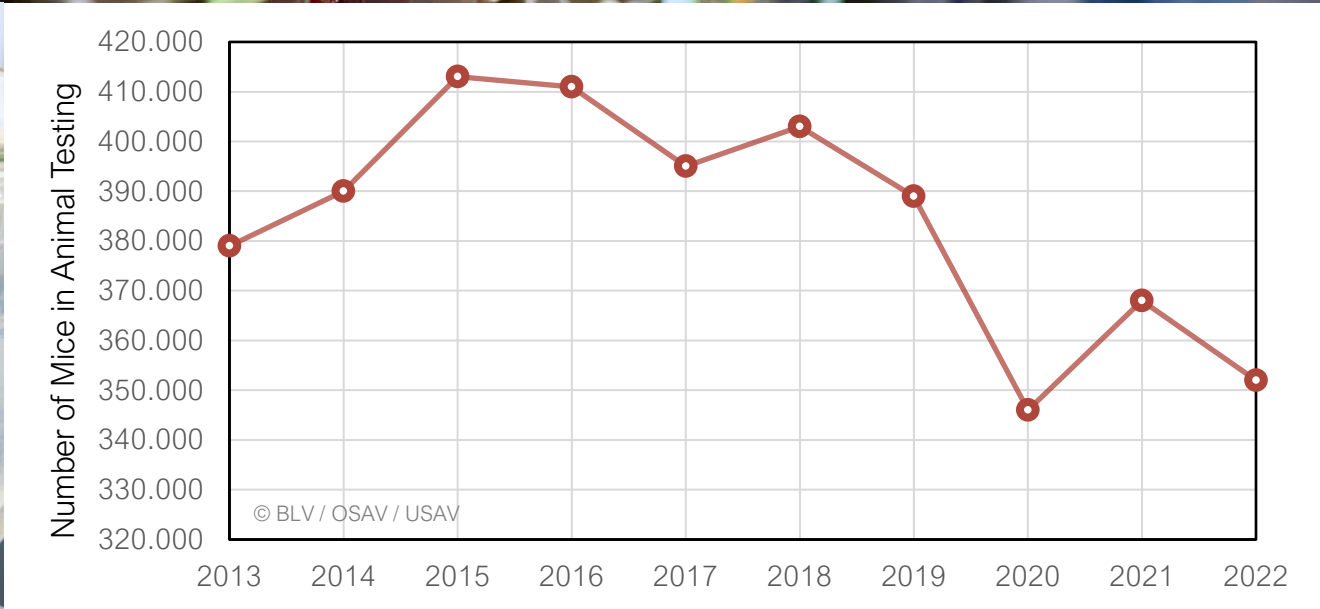
Scopio from Noun Project



NFP 79 « Advancing 3R »



Versuchstiere, © ETH Zürich / Alessandro Della Bella



A Complex Mechatronic Design Task

3R Hub @ETH

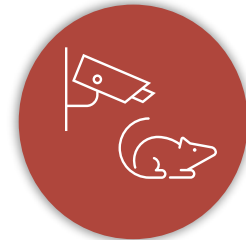
⊗ Replace

↙ Reduce

🔍 Refine

How can we **improve the welfare** of animals during testing and **maximize the information gained** from each animal?

Re-design home enclosure and storage system and provide real-time monitoring

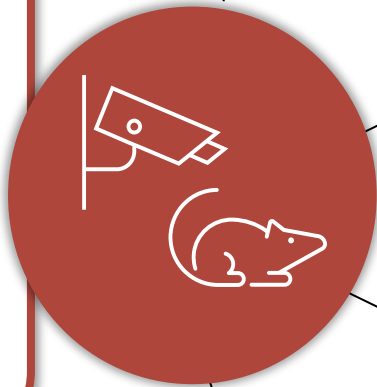


- One rack system for all enclosures
- Highly space restricted environment
- Real-time monitoring of, e.g. activity, posture, face and body temperature

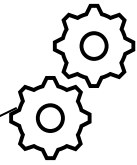


Multidisciplinary Supervision Team

Re-design home enclosure and storage system and provide real-time monitoring



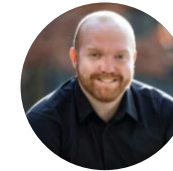
Vice President of Research
3R Hub
Animal Welfare Officers



Engineering Design
and Computing Lab



Molecular and
Behavioral
Neuroscience Lab



ETH AI Center



Potential
impact on ...

...scientific
research at
ETH

... scientific
research in
Switzerland

...industry

Detailed Information Event

Time

- May 30th at 16:15

Place

- CLA E4

Contents

- Presentation by the supervising team (25 min)
- Time for questions and discussion (35 min)
- Apéro (open end)

Register Here!

