

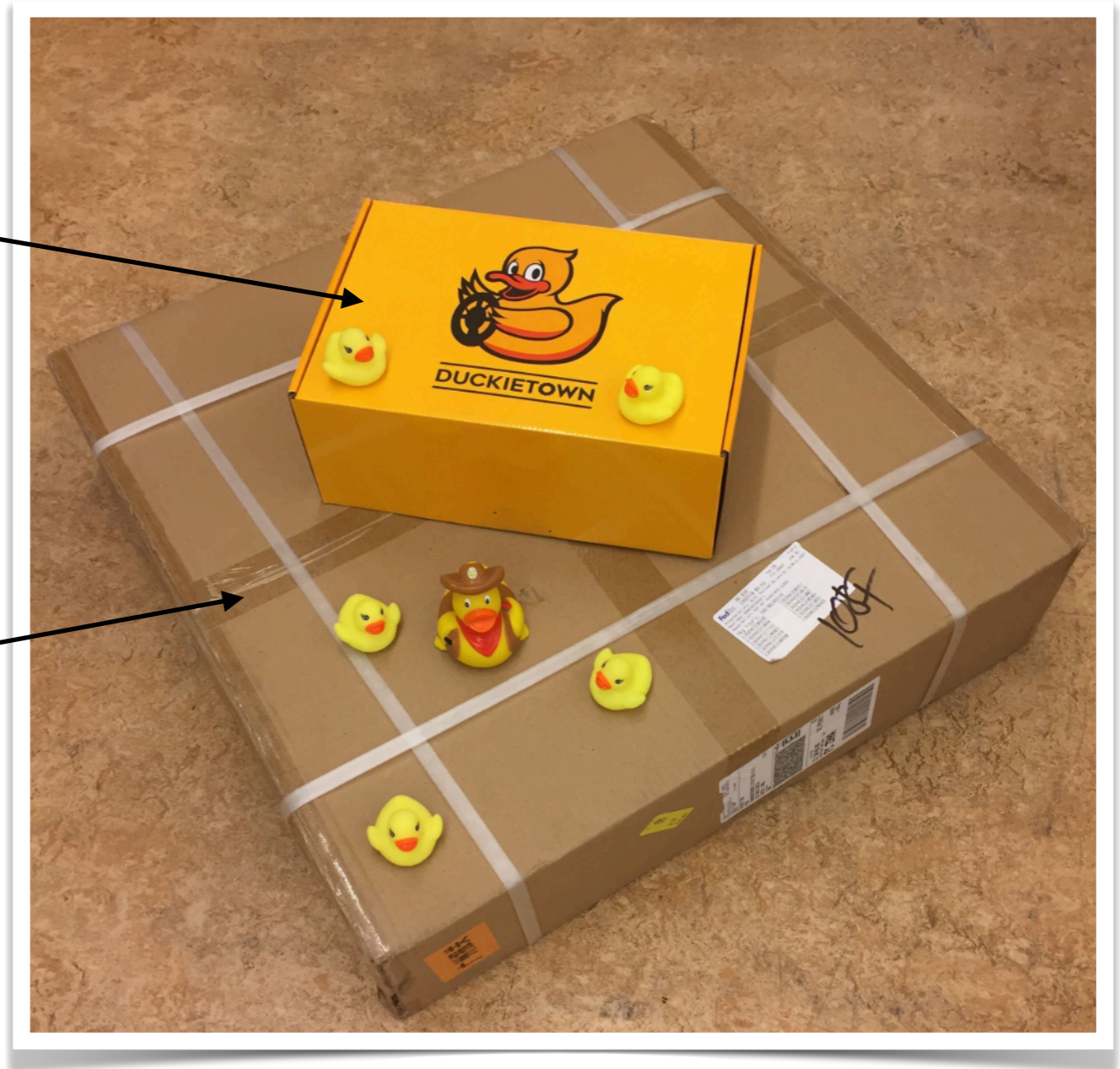
What's in the box?



The Duckietown DB-Beta Starter Kit

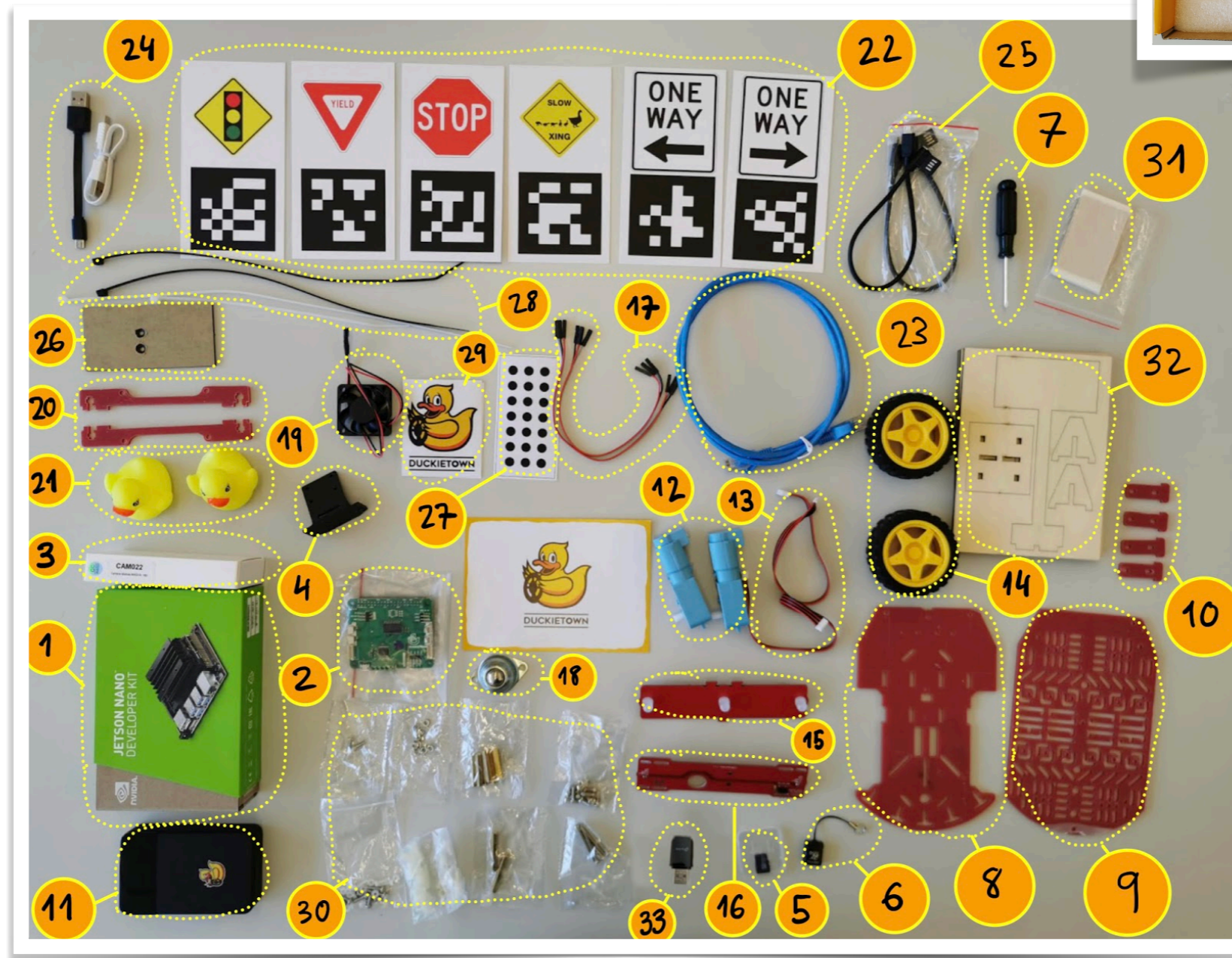
- Duckiebot (DB-Beta)

- Duckietown City Loop



Duckiebot

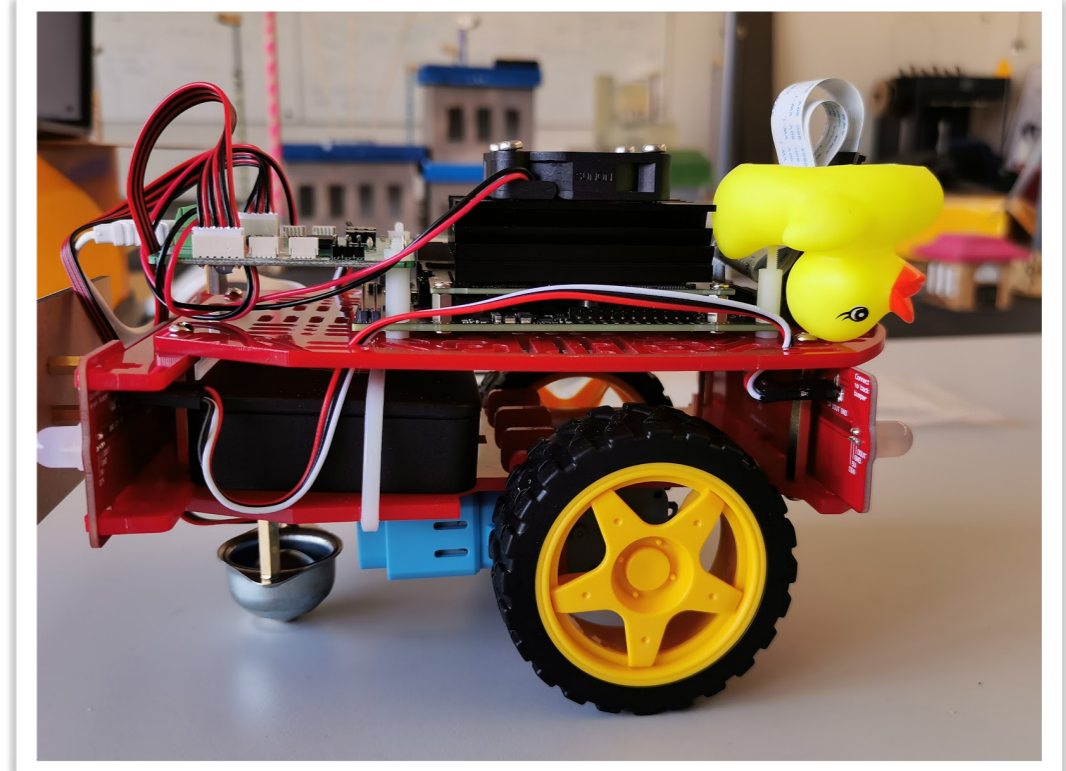
(version DB-Beta)



Duckiebot specifications

(version DB-Beta)

- **Chassis:** differential drive, passive omni-wheel
- **Sensors:**
 - 1 camera: 160deg field of view, front facing
 - 2 wheel encoders: ~2.7deg resolution
- **Actuators**
 - 2 DC motors
 - 5 RGB addressable LEDs
- **Computation:** Jetson Nano
- **Memory:** 32GB miniSD card, U3, Class 10
- **Power:** 5V, 4A, 2 USB outputs, 10Ah capacity

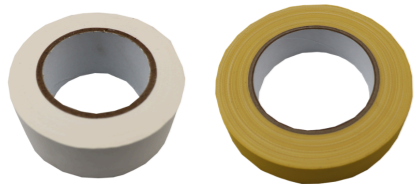


Assembly instructions: <https://tinyurl.com/dt-dbbeta-assembly>

Duckietown city loop



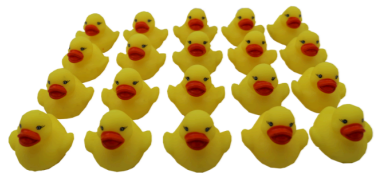
9 tiles (62x62x0.8cm)



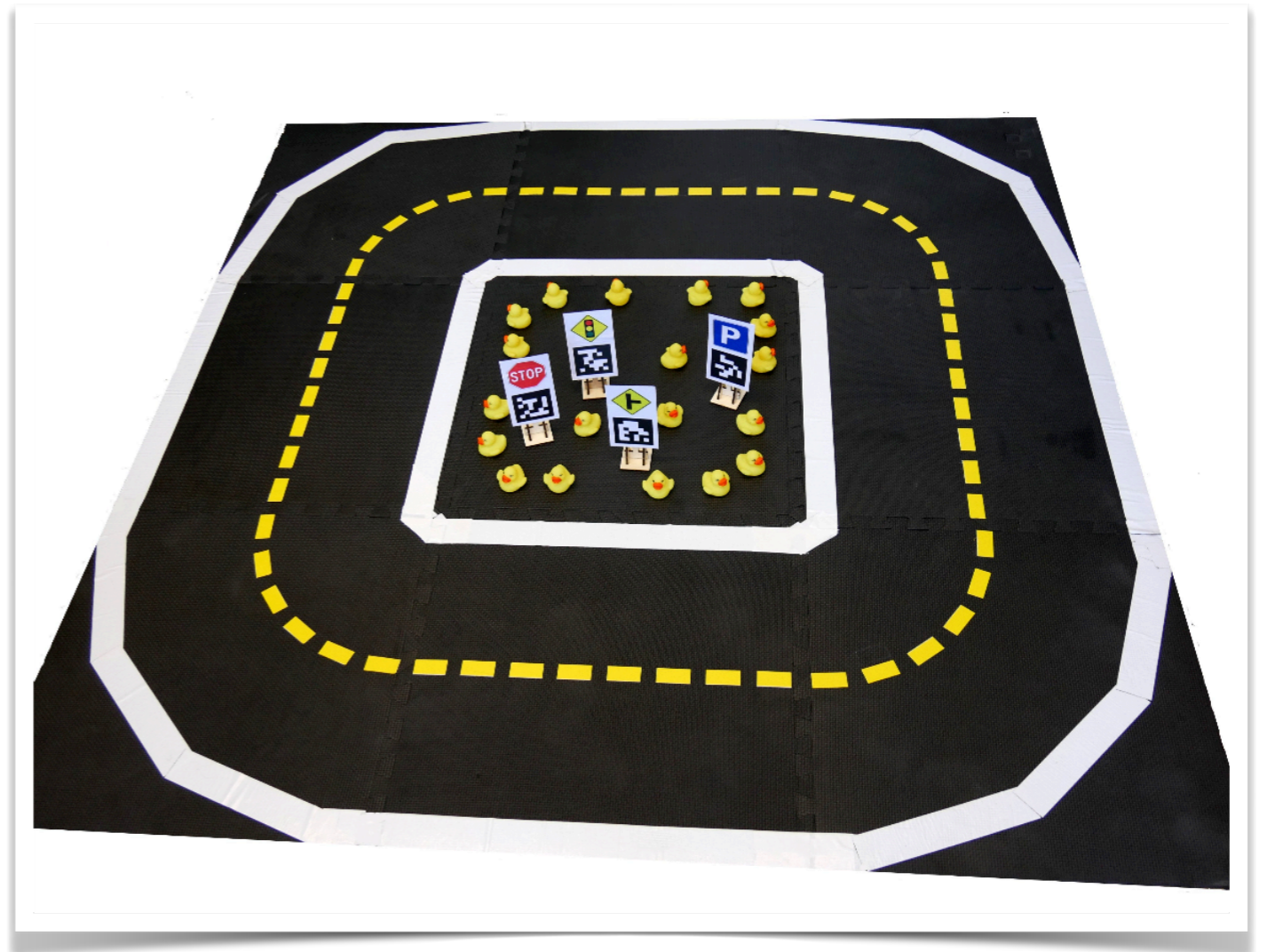
white and yellow tape



traffic signs



duckies!



Assembly instructions: <https://tinyurl.com/dt-city-assembly>

Final Result



Duckiebot in picture is for reference only