

Residential electricity demand for Spain: new empirical evidence using aggregated data

Leticia Blázquez
Nina Boogen
Massimo Filippini

CEPE Working Paper No. 82
February 2012

Residential electricity demand for Spain: new empirical evidence using aggregated data

Leticia Blázquez^a, Nina Boogen^b and Massimo Filippini^{b,c}

^a*Department of Spanish and International Economics, Econometrics and Economic History and Institutions, Toledo Faculty of Law and Social Sciences, University of Castilla-La Mancha, Cobertizo de San Pedro Mártir, s/n, 45071, Toledo, Spain. Phone number: (34)925268800-Ext 5163, Fax number (34)925 26880. Leticia.Blazquez@uclm.es. (Corresponding Author).*

^b *CEPE-Centre for Energy Policy and Economics, Federal Institute of Technology, Zürichbergstrasse 18(ZUE E) CH-8032, Zurich, Switzerland. nboogen@student.ethz.ch.*

^c *Department of Economics, Università della Svizzera Italiana, Via Giuseppe Buffi 13CH-690 Lugano, Switzerland. Massimo.filippini@usi.ch.*

Version: February, 2012

Abstract

This paper presents an empirical analysis on the residential demand for electricity. This analysis has been performed using aggregate panel data at the province level for 47 Spanish provinces for the period from 2000 to 2008. For this purpose, we estimated a log-log demand equation for electricity consumption using a dynamic partial adjustment approach. This dynamic demand function has been estimated using OLS, a fixed effect model, and a GMM estimator proposed by Blundell and Bond (1998). The purpose of this empirical analysis has been to highlight some of the characteristics of the Spanish residential electricity demand. Particular attention has been paid to the influence of price, income, and weather conditions on electricity demand. The estimated short and long-run own price elasticities are, as expected, negative, but lower than 1. Furthermore, weather variables have a significant impact on electricity demand.

JEL: D, D2, Q, Q4, R2.

Keywords: residential electricity demand, panel data, partial adjustment model, aggregate data.

Residential electricity demand for Spain: new empirical evidence using aggregated data

1. Introduction

The study of Spanish domestic energy demand is especially appealing for several reasons. Since the early nineties, Spain has experimented profound social, economic, cultural and demographic changes; changes which have accelerated in the last decade. These social and economic transformations have significantly conditioned the determinants of the residential energy demand. As an illustration, from 1990 to 2008, Spanish residential final energy demand accumulated a growth of 73%, with an annual growth rate four times higher than the one observed in other European countries. And in the particular case of electricity, Spanish residential electricity demand increased by 32% from 2000 to 2008, becoming the largest and most dynamic electricity consumption sector. This growth has been one of the highest among European countries. Specifically, the main reasons for this trend have been (i) an important population increase and an even larger increase in the number of new houses and apartments; (ii) a decreasing household size as a consequence of changes in the structure and composition of households; (iii) a convergence with the rest of Europe in household equipment as a result of more similar habits and behaviours; and (iv) a long lasting policy of low tariffs.

Together with economic and social variables, Spanish electricity demand is strongly related to climatic factors. These climatic factors can be summarized, for example, by the temperatures registered in different locations. Spain is a very suitable setting to examine the impact of weather conditions on electricity demand because the country is far from being a homogenous meteorological territory. In a simple approximation, six separate climate zones can be differentiated.

The significant increase in electricity consumption experienced in Spain during recent decades has also influenced its level of CO₂ emissions. A considerable portion (32%) of the electricity consumed in Spain is produced in coal and gas power plants. As a consequence, a systematic failure of Spain to comply with the Kyoto Protocol commitments has been observed during recent years. Therefore, environmental problems related to the electric power system and security of supply have made the encouragement of an efficient use of electricity by residential consumers a main objective of Spanish energy policy.

In order to design policy instruments that influence electricity demand, it is crucial to have information on price and income elasticities and to identify the determinants of this demand; i.e. to estimate Spanish residential electricity demand using an econometric approach.

Since the pioneer work of Houthakker (1951), vast literature on modelling the residential demand for electricity and examining its determinants has been published. Donatos and Mergos (1991); Burney (1995); Silk and Joutz (1997); Filippini (1999); Lariviere and Lafrance (1999); Christian and Michael (2000); García-Cerruti (2000); Miller (2002); Lin (2003); Holtedahl and Joutz (2004), Hondroyannis (2004); Narayan et al. (2007); Mohammadi (2009) and Alberini and Filippini (2011) are some of the most recent studies. Most of these works have estimated both the short-run and the long-run residential demand for electricity using aggregate data and applying different methodologies. The differentiation between short and long run is essential to analyse the electricity demand since their determinants are different. Electricity is used in combination with electrical appliances to produce energy services such as lighting, cooking and heating. And while in the short run the demand variation should be related to a higher or lower intensity use of current equipment (due to meteorological changes, for instance), in the medium and long term, the change of the types of electrical appliances used as well as changes in behaviour have an impact on electricity demand (Moral-Carcedo and Vicéns-Otero, 2005). The price and income elasticity values reported in the literature are fairly heterogeneous. The heterogeneity of the results could be due to differences in the period and region considered in the analysis and to the econometric approach used for the estimation.

Despite this extensive literature, there are few studies focusing on the demand for residential electricity in Spain. Two main contributions are Labandeira et al. (2006) and Labandeira et al. (2011). Both works analyse Spanish residential demand using household disaggregate data. The first paper estimates a residential energy demand system using data from a national statistical survey. They apply an extension of Deaton and Muellbauer's (1980) Almost Ideal Demand Model, and consider the following energy sources: electricity, natural gas, LPG (butane and propane gases) and car fuels. They found a price elasticity value of -0.80 and an income elasticity value of 0.7. In comparison to the aforementioned literature, these values are relatively high. The second work focuses on the estimation of Spanish industrial and residential electricity demand using monthly data from one of the largest electricity companies. The authors consider electricity and gas prices as well as some socioeconomic and climate factors to be explanatory variables. From an econometric point of view, a random effects model for panel data is used. The study reports a short-run electricity price elasticity of -0.25.

Due to the scarce attention paid so far in this field to the specific case of the Spanish economy and the disparate results obtained in the two main papers, it seems clear that further research must be carried out.

The objectives of this paper are the following: (i) provide new empirical evidence for Spanish residential electricity demand on the values of the short and long run price and income elasticities; (ii) analyse the impact of climate on electricity demand using different definitions for the computation of the climate variables.

In contrast to the previous papers, this analysis will be performed using aggregate panel data for 47 Spanish provinces for the period 2000 to 2008. For this purpose, we estimated a demand equation for electricity consumption using a dynamic partial adjustment approach. This dynamic demand function will be estimated using OLS, a fixed effect model, as well as the GMM estimator proposed by Blundell-Bond (1998).

The paper is organized as follows: Section 2 provides a description of the domestic Spanish sector from an energy perspective. Section 3 presents the empirical model. In section 4, data used in the analysis and the calculation of the weather variables are discussed, while section 5 offers the econometric approaches and the empirical results applied. Some concluding remarks appear in section 6 of the paper.

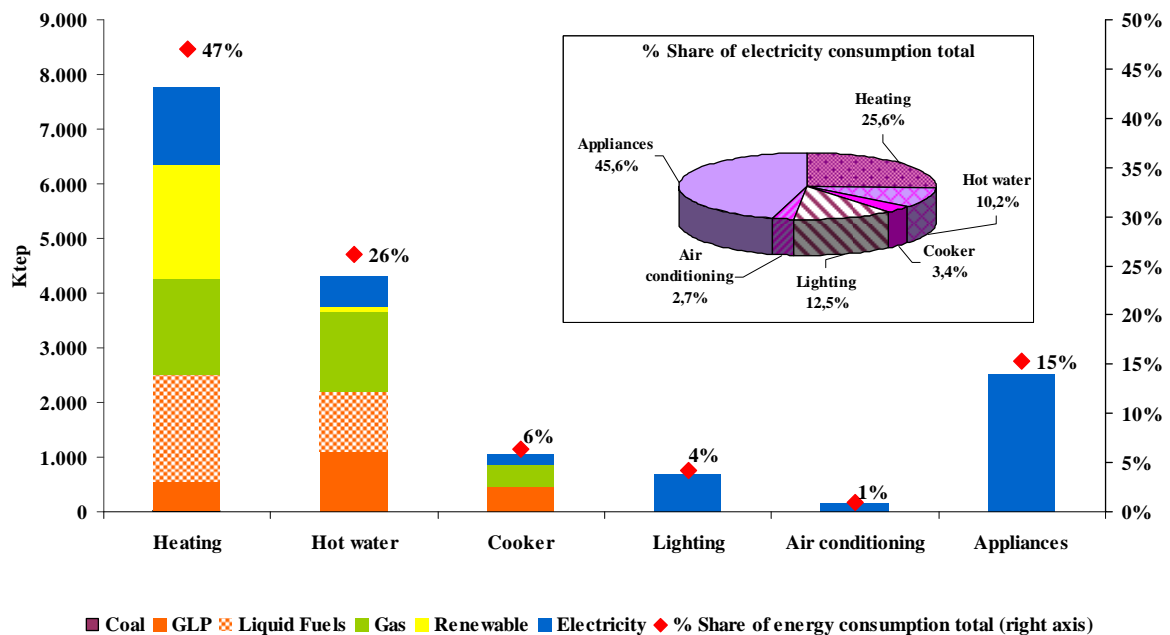
2. Spanish Residential Energy Demand

Spanish families represent a much lower percentage of the aggregate final energy consumption than in the EU: 16.4% versus 25.4% in 2008. The milder Spanish climate is the key factor in determining this difference. Although heating is the most relevant destination of energy in both areas, its participation in the energy consumption of Spanish households is much lower than in the EU average: 47% versus 70% (Graph 1). Excluding heating, a growing participation of air conditioning, lighting and hot water is observed in the last decade in contrast to the decreasing relative importance of energy consumption from appliances and cookers.

In connection with the dissimilar energy consumption destinations, while gas is the prominent energy source in the EU (39%), Spanish families consume primarily electricity (39%). The high share of electricity consumption in Spain is due to the inferior utilization of heating in Spain together with the high proportion of houses which still do not have any kind of heating system installed. These houses frequently utilize radiators or other auxiliary electrical heating systems. Despite the above

differences, a common trend is detected in both the EU and Spain: decreasing relative importance of solid fuels and oil products in favour of natural gas and electricity.

Graph 1. Final energy consumption in Spanish households by fuel and use (Ktep) (2009)



Source: Institute for Energy Diversification and Saving (Instituto para la Diversificación y Ahorro de la Energía (IDAE))

As mentioned in the Introduction, Spanish residential energy demand has grown steadily in recent years, well above other European countries. Two of the main factors explaining this increase are the spectacular increase in population, from 40.5 million inhabitants in 2000 to more than 46 million in 2008, and an even larger increase of the number of houses (20% in eight years). As a result of these two simultaneous dynamics, a reduction in the already small average household size was observed during this period across the whole country: from 2.8 persons per household in 2001 to 2.6 in 2008¹. This means a convergence with the EU-15 average. The main reasons for this increase was the growth of households composed of only one person², one-parent families and of couples without children. In fact, the increase in the number of houses follows an inverse relation to its size. Obviously, the more individuals living in a household the higher electricity consumption in it. However, the demand shows scale economies so that in aggregate terms the total consumption will be lower. The largest sized

households are better equipped to optimize time and common tasks and thus use the equipment more intensely. This effect is clear in hot water or cooker usage.

Another determinant of the vigorous increase in residential electricity demand has been the economic growth occurring in Spain. From 1993 to 2007, Spain has had the most lasting period of growth in its recent history. This has favoured a prompt convergence between Spanish per capita income and the EU-15 level, up to (in PPP) 88% in 2010.

All these socioeconomic advances, along with the progressive similarity in habits and behaviours have allowed for a convergence with the most advanced European countries in terms of household equipment which in turn has enhanced a faster growth in residential electricity demand in Spain (Table 1). We observe improvements in all kinds of equipment, but one of the most influential changes in the way electricity is consumed in Spain is the increase in the usage of air conditioning systems. Ten years ago, peak demand was reached on the coldest days of winter because of the functioning of electric heating systems, while the summer months did not have much influence on demand. In recent years, peaks have also been reached on the hottest days due to the utilization of air conditioning systems. It is very likely that in coming years peak demands will be reached on summer days instead of in winter.

Table 1. Spanish Household Equipment (Percentage of households)

	2000	2008
With installed heating system (individual and central)	42.43	65.10
<i>With gas heating^a</i>	38.35	45.94
<i>With electric heating^b</i>	12.01	25.60
Air Conditioning	15.52	35.5
Hot Water	98.77	99.27 ^a
<i>Hot water with electricity^b</i>	12.92	14.98 ^a
Independent Dryer	n.d	21.6
Electric Cooker	23.13	39.61 ^a
Dishwasher	24.56	43.50
Freezer	26.55	33.86 ^a
Microwave	54.28	78.01 ^a
Computer	30.54	59.60
Video	70.31	75.70 ^a
Music centre	59.83	64.78 ^a
Video games	n.d	27.70

^aData for 2005. ^bShare of households with installed heating and hot water.

Source: (ECPF and Survey of Households and Environment (Encuesta de Hogares y Medio Ambiente (2008))

Of course, together with the former socioeconomic and climate factors, tariffs should be considered as a significant determinant of electricity demand. The Spanish tariff scheme for domestic electricity consumption is a two-part tariff system, regulated in the majority of cases. This tariff is composed of two elements: a fixed monthly charge (or power term), which is based on the level of contracted power and the (regulated) price per kWh. Since 2007, there have been six levels of power able to be contracted by household consumers in Spain, ranging from 0 to 15 kW. Before that year, only two levels existed. Considering the evolution of the average price of electricity in the residential sector, calculated as the ratio between companies' revenues and their residential customers' electricity consumption³, a decrease of 26% in real terms is observed from 2000 to 2007. After the significant increase applied in 2008, this cumulative decrease has been 1.8%. This tendency is the consequence of both an incoherent electricity price policy and an imperfectly designed whole production market⁴. This combination has led the Government to accumulate a debt with electric companies of 20.000 million Euros (almost 2 points of the Spanish GDP); debt which must be paid via tariffs by current and future consumers. This is the reason why, since 2008 onwards, the tariff increases have been much more severe⁵. These lower prices make the weight that electricity expenditure has in a standard Spanish family's budget equivalent to 47% of the weight that it has in an average EU household. This means a small part of family budget: 2.15% in 2010⁶.

3. An electricity demand model

Residential electricity demand can be specified using the basic framework of household production theory (Flaig (1990); Filippini (1999) and Alberini and Filippini (2011)). According to this theory, households purchase inputs to produce "commodities" that appear as arguments in the household's utility function. In our specific case, a household combines electricity with electrical appliances to produce energy services such as heated rooms, lighting and hot water. In the long-term, the household is employing the optimal level of capital equipment and, therefore, is minimizing the electricity consumption. However, it is interesting to consider that, in some cases, electricity demand may depart from the long-term equilibrium consumption because the stock of electrical appliances cannot easily adjust to this long-term equilibrium. In order to take this potential situation into account, a partial adjustment model has been used.⁷

In line with the description of the electricity sector given in section 2 and the availability of data, we decided to specify the following dynamic model for Spanish residential electricity demand:

$$\ln E_{it} = \beta_P + \beta_{EP} \ln E_{it-1} + \beta_{PP} \ln PE_{it} + \beta_Y \ln Y_{it} + \beta_{POP} \ln POP_{it} + \beta_{HS} \ln HS_{it} \\ + \beta_{GAS} GAS_{it} + \beta_{HDD} \ln HDD_{it} + \beta_{CDD} \ln CDD_{it} + \beta_{DT} DT_t + \varepsilon_{it} \quad (1)$$

where E_{it} is aggregate electricity consumption; E_{it-1} is the aggregate electricity consumption in period $t-1$; Y_{it} is real disposable income of the household sector (in 2006 Euros); PE_{it} is the real average price of electricity (in 2006 Euros); HS_{it} is household size (total population/number of principal houses); POP_{it} is population; GAS_{it} is the percentage of households that have access to gas; HDD_{it} and CDD_{it} are, respectively, the heating degree days and the cooling degree days all for province i in year t ; DT is a series of time dummy variables and, ε_{it} is the disturbance term.

Let it be noted that, since electricity consumption and the regressors are in logarithms, the coefficients are directly interpretable as demand elasticities.

4. Data and the climate variable

The analysed period covers nine years, from 2000 to 2008, and 47 Spanish provinces⁸. Table 2 gives some details on the explanatory variables employed in the analysis. To begin with, the choice of the price variable considered in the estimation of equation (1) is not straightforward, because of the two part tariff structure used in Spain for the residential sector. In this case, two possibilities are available: (i) To use, as suggested by Nordin (1976), the marginal price and detract the fixed fee from the income; and (ii) To use, as suggested by Shin (1985), an average price. This approach has been used recently in several studies.⁹ However, it should be taken into account that the use of an average price could cause an endogeneity problem. In fact, the level of the average electricity price depends both on the amount of electricity consumed and on the level of power contracted. Nevertheless, Shin (1985) argues that, at the aggregate level, the potential for the price to be endogenous with consumption is mitigated by the presence of many different regulated block pricing levels, in our case many power block pricing levels. And, recently, this argument has been also employed by Bernstein and Griffin (2005) and Paul et al. (2009)¹⁰.

Table 2: Definition of variables and descriptive statistics (2000-2008)

Variables	1. Quartile	2. Median	3. Quartile
Electricity consumption (kWh)	451,834,000	788,745,000	1,384,952,000
Electricity Price (€/kWh)	0.081	0.101	0.111
Disposable Household Income (thousand 2006 €)	4,126,600	6,744,543	12,300,000
Population	356,437	580,077	955,045
Household size (HS)	2.633	2.732	2.856
Penetration Gas (%)	0.057	0.115	0.263
Heating degree days (HDD) 15	626	969	1,486
Heating degree days (HDD) 18	1,167	1,623	2,217
Cooling degree days (CDD) 22	59	191	356
Cooling degree days (CDD) 18	311	587	920

The income variable is measured as the net disposable income available for the sector “households”, expressed in real terms. The variable population stands for the total population in each province i in year t : The higher the population of a province the higher the domestic electricity consumption in it. Household size is included in the model to capture the impact of the number of members per household on the demand for electricity. This size has been calculated as the ratio between the population and the number of principal houses and a negative sign is expected for its coefficient.

To account for the impact of natural gas on electricity demand, we introduce the penetration rate of gas into the equation (2), measured as the number of gas consumers divided by number of houses. Of course, this variable is a proxy for the gas price, which is not available for all provinces. Nonetheless, since the price of natural gas for domestic use in Spain is considerably lower than electricity price, we consider that the penetration rate is a fairly accurate proxy. As substitute for electricity, a negative sign of the coefficient is expected.

There are several methods to measure the effect of climate on electricity demand. One approach is to use the average outside temperature (e.g. Dubin, 1985; Henley and Peirson, 1997; Sailor and Muñoz, 1997). The drawback of this measure is that the non-linear effect of temperature on electricity demand is not reflected. For instance, if the temperature decreases from 20 to 17 degrees Celsius, the level of heating and cooling activities within a house will not change or will do so marginally. This shortcoming is especially acute in Southern European countries, where the non-linearity is even more marked (Bessec & Fouquau 2008).

As an illustration, the annual average values for mean air temperature in Spain vary between values below 2.5 °C in areas of high altitude (Pyrenees) and of values higher than 17 °C, measured in the provinces of Huelva, Seville and Cadiz. Additionally, average monthly temperature values fluctuate

quite a lot throughout the year, with maximum values in the summer (July and August) above 27 °C in some areas of the Spanish provinces of Caceres, Badajoz, Toledo, Seville, Cordoba and Jaen, and minimum values in winter (December to February) below 0.0 °C in areas of high altitude¹¹.

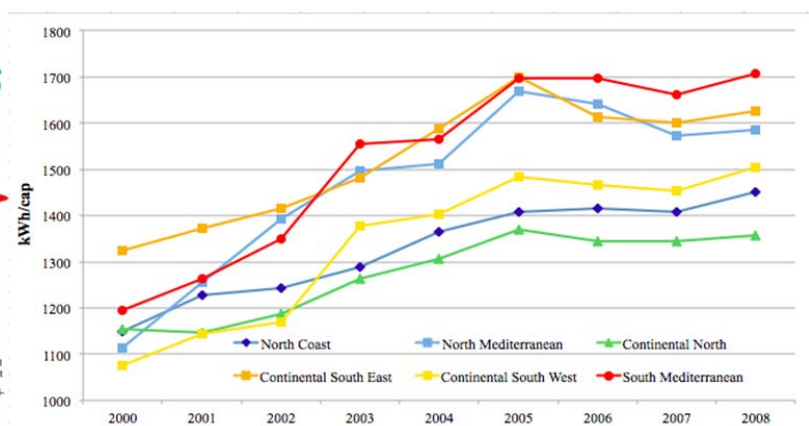
Another option is the one used by Aroonruengsawat and Auffhammer (2009), who include some dummy variables for climatic zones in their demand model. Although easy and convenient, these dummy variables might also capture other factors. Therefore, they should only be used in special cases. In the case of Spain, the country can roughly be divided into six different climate zones based on temperature (Figure 1): North Coast, North Mediterranean, South Mediterranean, Continental North, Continental South East and Continental South West (Red Eléctrica de España, 1998)¹². In accordance with this classification, different patterns of domestic electricity consumption are observed (Graph 2). Although an increasing trend is visible across the whole country, in 2008 the coldest zones of the country, the North Coast and Continental North, exhibited the lowest per capita electricity consumption while the hottest areas, the South Mediterranean and Continental South East, presented the highest figures. The most significant increases are observed in the South Mediterranean and North Mediterranean zones. In this sense we observe the effect of the rapid air conditioning penetration on these dynamics.

Figure 1. Climate Zones in Spain



Source: Authors' elaboration with data from REE (1998)

Graph 2. Domestic Electricity consumption per capita in Spain per climate zones



Source: Authors' elaboration

In order to take into account the non-linear relationship between demand and temperature, most of the existing studies use two climate variables (Table 3), i.e. heating degree days (HDD) and cooling

degree days (CDD). Usually, these two measures are defined as follows (Moral-Carcedo and Vicéns-Otero (2005)):

$$\text{HDD} = \sum_{nd} T^* - T_t; 0$$

$$\text{CDD} = \sum_{nd} T_t - T^*; 0$$

where nd is the number of days of a particular year, T^* is the threshold temperature of cold or heat, and T_t the observed temperature on day t . HDD and CDD represent the number of days on which the temperature is respectively below and above the predetermined thresholds of cooling and heating, and by how many degrees. The threshold is a “temperature-barrier” over or under which the heating or cooling appliances will be switched on. So, these two variables indirectly measure the demand for heating and cooling services. However, this method has also some drawbacks. There is no unique definition of the values of the “threshold” or comfort temperatures, generally set to 18°C (e.g., Pardo et al. 2002; Valor et al. 2001; Alberini and Filippini, 2011). However, such a value might not be appropriate for a county like Spain (Bessec and Fouquau, 2008).

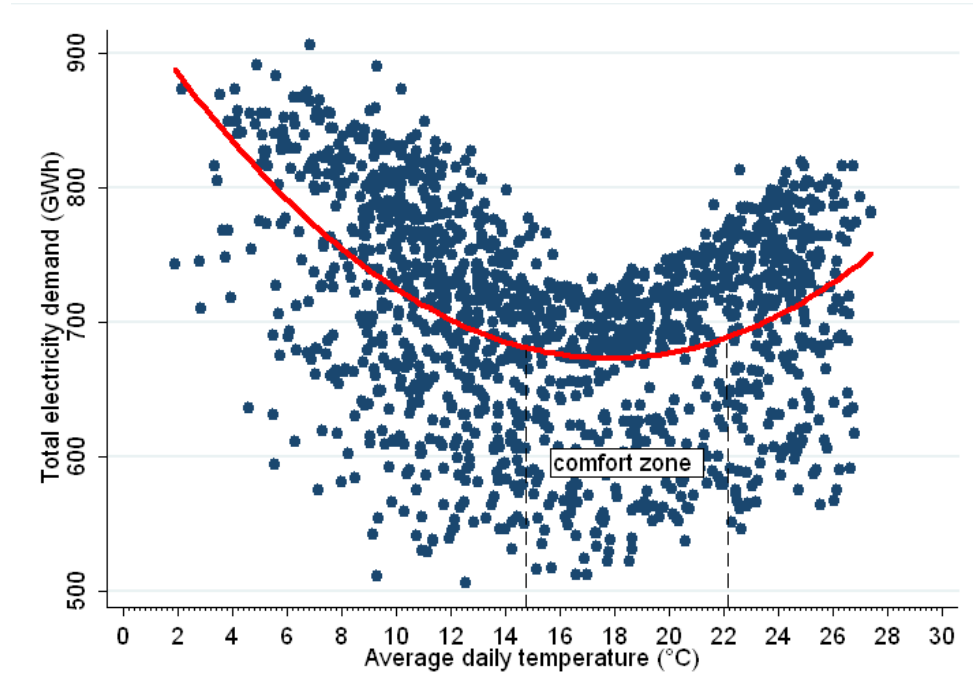
Table 3: Literature on electricity demand using the concept of heating and cooling degree days

Author	Study Location	Threshold
Sailor and Muñoz (1997)	USA	18.3°C except for Florida: 21°C
Pardo et al. (2002)	Spain	18°C
Reiss and White (2005)	California	HDD: 60°Fahrenheit≈15.56°C CDD: 70°Fahrenheit≈21.11°C
Beccali et al. (2008)	Palermo	For HDD: 18.7°C For CDD: 22°C
Psiloglou et al. (2009)	Athens and London	Athens: 20°C London: 16°C
Valor et al. (2010)	Spain	18°C
Eskeland and Mideksa (2010)	Europe	For HDD: 18°C For CDD: 22°C
Labandeira et al. (2011)	Spain	For HDD: 13°C For CDD: 23°C
Alberini and Filippini (2011)	USA	65°Fahrenheit≈18.33°C

The usage of two different thresholds for HDD and CDD is also recurrent in literature, with the threshold for HDD staying mainly at 18°C and the threshold for CDD set on a higher level (Sailor and Muñoz 1997; Beccali et al. 2008; Eskeland and Mideksa, 2010). Few papers try to use local thresholds other than 18°C, where the threshold for HDD is normally set lower than 18°C and higher than 18°C for CDD (Reiss and White 2005; Psiloglou et al. 2009; Labandeira et al. 2011). The same applies for the Spanish Technical System Operator, which uses 15°C as the threshold for HDD and 20°C for CDD. Furthermore, Moral-Carcedo and Vicéns-Otero (2005) used non-linear models, including the logistic smooth transition regression (LSTR), threshold regression (TR) and switching regressions (SR) models, to capture the non-linear response of demand to variation in temperature. In the LSTR model they estimate a lower threshold temperature of approximately 15.5°C. Therefore, 15°C seems to be a widely used threshold for HDD alongside the conventional 18°C.

To test the threshold value of 18°C for the case of Spain, Spanish daily total¹³ electricity demand is plotted against the daily average outside temperature (see Figure 2). The daily data only covers the years from 2007 to 2010. The average outside temperature was calculated with a weighted population average of the provincial temperatures. The minimum of the quadratic fitted curve is clearly visible, which represents the point of minimal sensitivity (electricity demand is inelastic to temperature change at this point). This can be calculated in this case at 17.83°C. We used an iterative linear regression method (steps of 0.1°C) in both directions from 17.8°C on to estimate a comfort zone. As soon as the regression was significant, we assume the temperature to have an influence on electricity demand from this point on. In this way, we could calculate a comfort zone between 14.7°C and 22.2°C.

**Figure 2. Response of total daily electricity demand to daily average outside temperature
2007-2010**



As a result of these disparate approaches, we decided to estimate two models; one model with the conventional threshold of 18°C (model B) and in addition, a more accurate model with 15°C as the threshold for heating and 22°C for cooling (model A). This model considers the estimated comfort zone between 15-22°C, in which no heating or cooling will take place. We believe this comfort zone to be much more realistic than a sharp switch from heating to cooling at 18°C. In our empirical analysis, we expect both coefficients of these climate variables to have a positive impact on electricity demand.

5. Econometric approach and estimation results

For the estimation of Spanish domestic electricity demand equations we have an unbalanced panel dataset. To account for unobserved heterogeneity, in panel data analysis we can specify models with either province-specific fixed effects (FE) or with province-specific random effects (RE). However, since the inclusion of a lagged dependent variable in the explanatory variables violates the strict exogeneity assumption, the estimation of the dynamic panel data model (2) using a FE or a RE model is not appropriate.¹⁴ One approach to solve this problem is to use instrumental variable (IV) estimators.¹⁵ For instance, Blundell–Bond (1998) propose a system GMM estimator (GMM-BB), which utilizes lagged first differences as instruments for equations in levels as well as the lag variable

in first-difference equations. Blundell-Bond (1998) had shown that with a small sample, like in our case, this estimator seems to be preferable to other IV and GMM estimators.

In this study we decided to estimate the dynamic demand model (2) using the following three estimators: i) the conventional FE, ii) the OLS model, and iii) the one-step system GMM-BB estimator proposed by Blundell and Bond (1998). Following Bond and Blundell (2011), we decided to estimate the model using also OLS. This procedure will give us the possibility to verify the consistency of our results. In fact, it is well known that in dynamics models OLS are upwardly biased whereas FE models are biased downwards. Therefore, the results of the coefficient of the lagged variable should lie between the two.

Further, as previously mentioned, we decided to apply two different definitions for the computation of the HDD and CDD variables. We use a unique threshold temperature for both HDD and CDD of 18 degree Celsius (Models A) and, additionally, we apply a threshold temperature of 15 degree Celsius for the computation of the HDD and 22 degree Celsius for the computation of the CDD (Models B).

The coefficients of the six versions of the dynamic demand model (2) are shown in Table 4. The GMM-BB estimates are shown together with the p-value of the test statistics of serial correlation (AR1, AR2) and over-identifying restrictions (Sargan). The p-values of these statistics show that in both models there is no significant second order autocorrelation. Moreover, the p-value of the Sargan test statistic shows that the null hypothesis that the population moment conditions are correct is not rejected in all models.

Table 4. Estimation results

<i>Variables</i>	Models A-15°C/22°C						Models B-18°C					
	LSDV		OLS		GMM-BB		LSDV		OLS		GMM-BB	
	<i>Coef.</i>	<i>t-val.</i>	<i>Coef.</i>	<i>t-val.</i>	<i>Coef.</i>	<i>t-val.</i>	<i>Coef.</i>	<i>t-val.</i>	<i>Coef.</i>	<i>t-val.</i>	<i>Coef.</i>	<i>t-val.</i>
<i>Lnq LI.</i>	0.15635	3.08	0.77970	23.29	0.54660	4.24	0.15539	3.05	0.77910	23.38	0.53333	4.14
<i>Ln_p</i>	-0.04927	-1.79	-0.05634	-3.10	-0.11180	-2.07	-0.04739	-1.71	-0.05528	-3.03	-0.11290	-2.05
<i>Ln_y</i>	0.02081	0.14	0.07189	2.21	0.13507	3.14	0.01728	0.11	0.07348	2.27	0.13775	3.26
<i>Ln_{pop}</i>	0.78419	5.28	0.16144	3.95	0.34858	3.23	0.80053	5.38	0.15966	3.91	0.35673	3.32
<i>Ln_{hs}</i>	-0.13374	-0.8	-0.17413	-3.79	-0.35514	-3.22	-0.17052	-1.02	-0.17225	-3.76	-0.36325	-3.30
<i>Ln_{hdd}</i>	0.06571	1.98	0.00585	0.56	0.03439	2.98	0.06105	1.32	0.01239	0.77	0.05213	2.90
<i>Ln_{cdd}</i>	-0.00495	-0.52	0.00730	2.00	0.01111	2.19	-0.03051	-1.42	0.01659	2.14	0.02653	2.57
<i>GAS</i>	-0.15194	-1.39	-0.14092	-3.06	-0.26479	-4.30	-0.15427	-1.41	-0.13929	-3.05	-0.25806	-4.34
<i>Cons</i>	5.95897	1.88	0.77009	1.84	1.46018	1.80	6.05042	1.89			1.30661	1.57
<i>Sargan test (p-value)</i>						0.149						0.138
<i>Arellano-Bond AR1 test (p-value)</i>						0.000						0.000
<i>Arellano-Bond AR2 test (p-value)</i>						0.838						0.787

Most of the parameter estimates are statistically significant and the coefficients generally display the expected signs. The results are satisfactory in so far as the coefficients of the price variables and the coefficient of the lagged variable are significant and carry the expected signs in all models: The coefficient of the lagged variable is used for the computation of the long-run elasticities. The value of the income coefficient has the expected sign and is significant in the OLS and GMM-BB models. As expected, the largest difference in the significant coefficients concerns the one of the lagged dependent variable. The coefficients of the lagged demand variables obtained with the one-step Blundell-Bond estimator are higher than those obtained with the FE estimators and lower than those obtained with the OLS. As mentioned previously, the results obtained using the FE and the OLS estimators are biased. For this reason, the explanation of coefficients and the computation of the short- and long-run price and income elasticities will refer specifically to the results obtained with the GMM-BB model. Further, as previously explained, we consider the computation of the HDD and CDD variables using different threshold temperatures more appropriate than the one that considers only one threshold temperature. Therefore, our comments on all coefficients will be based on model A-GMM-BB. It is worth mentioning, however, that the results reported for model B-GMM-BB are relatively similar.

In general, the results show that socioeconomic variables such as population and household size, as well as the variables reflecting the weather conditions and the penetration of gas, seem to have an important influence on Spanish residential demand for electricity.

The estimated coefficient of household size (HS) indicates that the more people living in each house, the less the aggregate electricity demand. The coefficients of the two climate variables, HDD and CDD, show the expected sign and are significant. The estimated heating degree days elasticity is 0.03. This suggests that a 1 percent increase in the number of heating degree days will (*ceteris paribus*) result in about a 0.03 percent increase in household consumption of electricity. The estimated cooling degree days elasticity is 0.01. This implies that a 1 percent increase in the number of heating degree days will (*ceteris paribus*) result in about a 0.01 percent increase in household consumption of electricity. Moreover, the comparatively low impact of the CDD could indicate that, in spite of its rapid extension, the penetration or the usage of such air conditioning appliances are still relatively low in Spain. To this respect, it is worth noting that the effects obtained in our models are opposite to those estimated for Spain in Labandeira et al. (2011), who find a higher sensitivity of electricity demand to hot rather than to

cold days. Finally, the significant and negative sign of the gas penetration rate indicates a clear competition between electricity and gas in the provision of Spanish household energy, particularly in heating and hot water systems: every additional percentage point in the gas penetration rate implies a decrease of 26 percent in domestic electricity consumption. It is more than likely that natural gas usage will expand in the coming years; therefore one could expect a considerable decrease in household electricity consumption, especially in urban areas.

Table 5 displays estimates of the short and long-run price and income elasticities. The estimated short-run own price elasticity is approximately 0.11. This value indicates that residential electricity demand is extremely inelastic. As explained in section 2, Spanish residential prices have been fairly low in the period analyzed and the percentage that electricity expenditure represents in a standard Spanish household's total budget is quite small. As expected, the long-run price elasticity is higher: 0.24. These numbers are lower than the ones obtained for Spain in Labandeira et al. (2006) and Labandeira et al. (2011). In comparison with other works on different countries, our short-run results are, in general, lower, while the long-run price elasticities are similar to the ones found, for example, in Høltedahl and Jøurtz (2004) for Israel or García-Cerrutti (2000) for California. Despite the price-inelastic nature of Spanish electricity demand, the long-run results allow us to be moderately optimistic about the effectiveness of future pricing policies to reduce electricity consumption in Spanish households. As long as steady increases of tariffs seem unavoidable in Spain during the coming years (or decades) in order to diminish the bulky tariff deficit, one can expect a long-run positive effect of this policy on electricity demand.

The demand for electricity is responsive to the level of income (Y) with a short-run elasticity of 0.14 and a long-run income elasticity of 0.30. Since these values are well below unity, income growth apparently results in a less than proportional increase in electricity demand. While these results are again lower than the one found in Labandeira et al. (2006) they are in consonance with other studies, for example Houthakker et al. (1974) for USA, Baker et al. (1989) for UK, García-Cerrutti (2000) for California, Leth-Petersen (2002) for Denmark, Hondroyannis (2004) for Greece, Høltedahl and Jøurtz (2004) for Taiwan, or Kamerschen and Porter (2004) for USA. They also suggest that further convergence in per capita income of Spain with the most advanced countries in the EU-15 will not be translated into proportional increases in electrical equipment and in turn into proportional electricity consumption. Therefore, although

there still is margin for Spanish households to acquire better equipment as they increase their per capita income, the level of saturation could be close.

Table 5. Short-run and long-run elasticities

	GMM-BB MODEL A-15°C/22°C	
	Short run	Long run
Price elasticity	-0.11	-0.24
Income elasticity	0.14	0.30

6. Concluding Remarks

In this empirical analysis we have examined the residential demand for electricity in Spain. For this purpose, a dynamic partial adjustment model has been estimated. Aggregated data referring to the period 2000-2008 and 47 Spanish provinces have been used in the estimation.

The paper aims to contribute to the literature on residential electricity demand analysis using aggregate data in two ways. First, by analyzing the impact of weather on electricity demand, using different climate variables for it. Special attention has been placed on the method to compute the heating and cooling degree days. Secondly, to provide Spanish policy makers with new values on the price and income elasticities.

The empirical results show relatively low short and long run price and income elasticities. Therefore, an increase in electricity prices will have a modest impact on the residential electricity demand. It is then clear that in order to limit the growth rate of electricity consumption, policy makers should introduce higher energy efficiency standards for electrical appliances.

Another interesting result is the relative higher sensitivity of electricity demand to cold than to hot days. The relatively low impact of the heating degree days on the electricity demand can be explained by the fact that Spanish households are not widely using electric heating

systems. On the contrary gas heating systems are more and more common in Spain. This can explain the relative high impact of gas penetration on electricity consumption. The relatively low impact of the cooling degree days on the electricity demand can be explained by the fact that so far only a small fraction of Spanish households are using air conditioning.

Acknowledgements

The authors are grateful to the Spanish Ministry of Science and Innovation (ECON2010-21242-C03-01) for financial support for the research results reported here. The authors also benefited from comments by Fabian Heimsch. Naturally, the authors remain solely responsible for any error or omissions.

References

- Agencia Estatal de Meteorología, 2010. *Atlas climático ibérico - Iberian climate atlas*. Gobierno de España.
- Alberini, A., Filippini, M., 2011. Response of Residential Electricity Demand to Price: The Effect of Measurement Error. *Energy Economics* 33(5), 889-895.
- Anderson, T.W., Hsiao, C., 1982. Formulation and estimation of dynamic models using panel data. *Journal of Econometrics* 18(1), 47-82.
- Arellano, M., Bond, S., 1991. Some tests of specification for panel data: Monte Carlo evidence and an application to employment equations. *The Review of Economic Studies* 58(2), 277-297.
- Arocena, P., Blázquez, L., Grifell-Tatje, E., 2011. Assessing the consequences of restructuring reforms on firms' performance. *Journal of Economic Policy Reform* 14(1), 21-39.
- Aroonruengsawat, A., Auffhammer, M., 2009. Impact of Climate Change on Residential Electricity Consumption: Evidence from Billing Data, California Climate Change Center.
- Baker, P., Blundell, R., Micklewright, J., 1989. Modelling household energy expenditures using micro-data. *The Economic Journal* 99(397), 720-738.
- Baltagi, B.H., 2002. *Econometric analysis of panel data*, New York: John Wiley.
- Beccali, M., Cellura, M., Lo Brano, V., Marvuglia, A., 2008. Short-term prediction of household electricity consumption: Assessing weather sensitivity in a Mediterranean area. *Renewable and Sustainable Energy Reviews* 12(8), 2040-2065.
- Berndt, E.R., 1991. *The Practice of Econometric*, New York: Addison Wesley.
- Bernstein, M.A., Griffin, J.M., 2005. Regional differences in the price-elasticity of demand for energy, The Rand Corporation Technical Report.
- Bessec, M., Fouquau, J., 2008. The non-linear link between electricity consumption and temperature in Europe: A threshold panel approach. *Energy Economics* 30(5), 2705-2721.
- Blundell, R., Bond, S., 1998. Initial conditions and moment restrictions in dynamic panel data models. *Journal of Econometrics* 87(1), 115-143.
- Bond, S., Hoeffler, A., Temple, J., 2011. GMM estimation of empirical growth models. Discussion Paper No. 3048, CEPR, London.
- Burney, N.A., 1995. Socioeconomic development and electricity consumption A cross-country analysis using the random coefficient method. *Energy Economics* 17(3), 185-195.
- Christian, V. H., Michael, A., 2000. Long-term electricity demand in China - from quantitative to qualitative growth. *Energy Policy* 28, 231-241.
- CNE (Comisión Nacional de la Energía), 2010. Informe sobre el mercado minorista de electricidad (in Spanish).
- Deaton, A., Muellbauer, J., 1980. An almost ideal demand system. *The American Economic Review* 70(3), 312-326.

- Donatos, G.S., Mergos, G.J., 1991. Residential demand for electricity: the case of Greece. *Energy Economics* 13(1), 41–47.
- Dubin, J.A., 1985. *Consumer durable choice and the demand for electricity*, Amsterdam: North-Holland.
- Eskeland, G.S. & Mideksa, T.K., 2010. Electricity demand in a changing climate. *Mitigation and Adaptation Strategies for Global Change* 15, 877-897.
- Filippini, M., 1999. Swiss residential demand for electricity. *Applied Economics Letters* 6(8), 533–538.
- Filippini, M., 2011. Short- and long-run time-of-use price elasticities in Swiss residential electricity demand. *Energy Policy* 39(10), 5811-5817.
- Flaig, G., 1990. Household production and the short-and long-run demand for electricity. *Energy Economics* 12(2), pp.116–121.
- Federico, G., Vives, X., 2008. Competition and regulation in the Spanish gas and electricity markets. Report of the Public-Private Sector Research Center, IESE Business School, University of Navarra.
- Garcia-Cerrutti, L.M., 2000. Estimating elasticities of residential energy demand from panel county data using dynamic random variables models with heteroskedastic and correlated error terms. *Resource and Energy Economics* 22(4), 355-366.
- Henley, A., Peirson, J., 1997. Non-Linearities in Electricity Demand and Temperature: Parametric Versus Non-Parametric Methods. *Oxford Bulletin of Economics and Statistics* 59(1), 149–162.
- Holtedahl, P., Joutz, F.L., 2004. Residential electricity demand in Taiwan. *Energy Economics* 26(2), 201–224.
- Hondroyannis, G., 2004. Estimating residential demand for electricity in Greece. *Energy Economics* 26(3) 319–334.
- Houthakker, H.S., 1951. Some calculations on electricity consumption in Great Britain. *Journal of the Royal Statistical Society. Series A (General)* 114(3) 359–371.
- Houthakker, H.S., Verleger, P.K., Sheehan, D.P., 1974. Dynamic demand analyses for gasoline and residential electricity. *American Journal of Agricultural Economics* 56(2), 412–418.
- Kamerschen, D.R., Porter, D.V., 2004. The demand for residential, industrial and total electricity, 1973–1998. *Energy Economics* 26(1), 87-100.
- Kiviet, J.F., 1995. On bias, inconsistency, and efficiency of various estimators in dynamic panel data models. *Journal of Econometrics* 68(1),53–78.
- Labandeira, X., Labeaga Azcona, J., Rodríguez Méndez, M., 2006. A residential energy demand system for Spain. *Energy Journal* 27, 87-112.
- Labandeira, X., Labeaga, J.M., López-Otero, X., 2011. Estimation of Elasticity Price of Electricity with Incomplete Information. *Energy Economics* <http://dx.doi.org/10.1016/j.eneco.2011.03.008>.
- Lariviere, I., Lafrance, G., 1999. Modelling the electricity consumption of cities: effect of urban density. *Energy Economics* 21(1), 53–66.
- Leth-Petersen, S., 2002. Micro econometric modelling of household energy use: testing for dependence between demand for electricity and natural gas. *The Energy Journal* 23(4), 57–84.
- Lin, B.Q., 2003. Electricity demand in the People's Republic of China: investment requirement and environmental impact: ERD Working Paper No. 37, Asian Development Bank.

- Miller, J., 2002. Modelling residential demand for electricity in the US: a semiparametric panel data approach. Unpublished Manuscript. Department of Economics, Rice University: Texas.
- Mohammadi, H., 2009. Electricity prices and fuel costs: Long-run relations and short-run dynamics. *Energy Economics* 31(3), 503–509.
- Moral-Carcedo, J., Vicéns-Otero, J., 2005. Modelling the non-linear response of Spanish electricity demand to temperature variations. *Energy Economics* 27(3), 477–494.
- Narayan, P.K., Smyth, R., Prasad, A., 2007. Electricity consumption in G7 countries: A panel cointegration analysis of residential demand elasticities. *Energy Policy* 35(9), 4485–4494.
- Nordin, J.A., 1976. A proposed modification of Taylor's demand analysis: comment. *The Bell Journal of Economics* 719–721.
- Pardo, A., Meneu, V., Valor, E., 2002. Temperature and seasonality influences on Spanish electricity load. *Energy Economics* 24(1), 55–70.
- Paul, A., Myers, E., Palmer, K., 2009. A Partial Adjustment Model of US Electricity Demand by Region, Season, and Sector. RFF Discussion Paper No. 08-50.
- Psiloglou, B., Giannakopoulos, C., Majithia, S., Petrakis, M., 2009. Factors affecting electricity demand in Athens, Greece and London, UK: A comparative assessment. *Energy* 34(11), 1855–1863.
- Red Eléctrica de España S.A., 1998. Proyecto INDEL - Atlas de la demanda eléctrica española (in Spanish).
- Reiss, P.C. & White, M.W., 2005. Household electricity demand, revisited. *Review of Economic Studies* 72(3), 853–883.
- Sailor, D.J., Muñoz, J.R., 1997. Sensitivity of electricity and natural gas consumption to climate in the U.S.A.—Methodology and results for eight states. *Energy* 22(10), 987–998.
- Shin, J.S., 1985. Perception of Price When Price Information Is Costly: Evidence from Residential Electricity Demand. *The Review of Economics and Statistics* 67(4), 591–98.
- Silk, J.I., Joutz, F.L., 1997. Short and long run elasticities in US residential electricity demand: A co-integration approach. *Energy Economics* 19, 493–513.
- Valor, E., Meneu, V., Caselles, V., 2001. Daily air temperature and electricity load in Spain. *Journal of Applied Meteorology* 40, 1413–1421.

Appendix

Table A1. Data Sources

Variable	Description	Source
Electricity Consumption (Mwh)	Number of Mwh consumed by residential consumers (<15 KW)	Ministry of Industry, Tourism and Trade (MITYC)
Real Average Price of Electricity 2006 (thousand €/kwh)	Companies' revenues from electricity consumed in the residential sector / Electricity consumption in residential sector	Own calculation with data from MITYC
Households' Real Disposable Income (2006 thousand €)	Real disposable income of the institutional sector: Households	National Institute of Statistics (Instituto Nacional de Estadística (INE)). Regional Accounts
Total Population	Total population in each province	INE. Active Population Survey. (Encuesta de Población Activa) (EPA))
Number of houses (Total)	Number of houses there are in each province	Ministry of Economy and Finance
Number of principal houses	Number of houses there are in each province	Ministry of Economy and Finance
Household size	Population / principal houses	Own calculation with data from INE and Ministry of Economy and Finance
HDD 18	Heating Degree Days with threshold of 18°C	Own calculation with data from Spanish Meteorology Agency (Agencia Española de Meteorología (AEM))
CDD 18	Cooling Degree Days with threshold of 18°C	Own calculation from AEM data
HDD 15	Heating Degree Days with threshold of 15°C	Own calculation from AEM data
CDD 22	Cooling Degree Days with threshold of 22.2°C	Own calculation from AEM data
Gas penetration rate	Number of gas consumers divided by number of houses	Own calculation with data from MICYT and Ministry of Economy and Finance

NOTES

¹This size is calculated considering only principal houses. National Institute of Statistics in Spain (INE) defines “household” as the group of people that commonly occupies a family principal house or part of it and consume and/or share food or other goods and housekeeping.

²The number of households with only one person grew 100% from 2000 to 2010 due mainly to the growth of people younger than 65 years who decided to live alone (193%) and also the ageing of population in Spain. The number of households with two persons grew 53% (data of the Household Budget Continuous Survey (Encuesta Continua de Presupuestos Familiares (ECPF)) and Household Budget Survey (Encuesta de Presupuestos Familiares (EPF))).

³Unfortunately, the data provided by Spanish authorities does not allow isolating the domestic segment’s revenues; therefore the average price is calculated by the residential sector, including the commercial segment. In spite of this shortcoming, this average price could be considered as a good proxy to domestic tariffs variation.

⁴See Arocena et al. (2011) for an analysis of the effects of Electricity Sector Law on the stakeholders of the electricity sector.

⁵One of the most damaging effects of the tariff deficit is that it is slowing down the effective liberalization of the residential segment and the transition toward a non-regulated price regime. Since 2003 all consumers have access to the liberalized market and contract their consumptions at market price. And since 2009 the regulated tariff system has been reduced to the so-called last resort tariff for low tension consumers. However, as long as incumbents offer regulated tariffs lower than market prices, the potential incoming companies are not able to compete: they face negative margins (Federico and Vives, 2008). As a result, in 2010, 85% of households were still consuming electricity at regulated prices. A side effect of this scenario is that the prices offered by retailers in the free market are indeed more related to regulated tariffs than to whole market prices (CNE, 2010).

⁶According to the Household Budget Survey. Expressed in 2006 prices.

⁷For a discussion of this type of models in the estimation of electricity demand see Berndt (1991), Alberini and Filippini (2011) and Filippini (2011).

⁸See Appendix for a detailed description of variables and data sources.

⁹See Bernstein and Griffin (2005), Paul et al. (2009) and Alberini and Filippini (2011).

¹⁰At this point, it is worth remembering that in 2010, 85% of domestic consumers in Spain were still in the regulated market.

¹¹This explanation is based on data from the Spanish Meteorology Agency (Agencia Estatal de Meteorología).

¹²These six homogeneous zones were defined by applying a cluster technique to a daily temperatures historical (time) series of 44 Spanish observatories.

¹³The daily data was not available on residential basis.

¹⁴To note, that a correction of the bias of the FE estimator has been proposed by Kviat (1995).

¹⁵For a discussion on this issue and for a presentation of econometric models for panel data see Baltagi (2002).