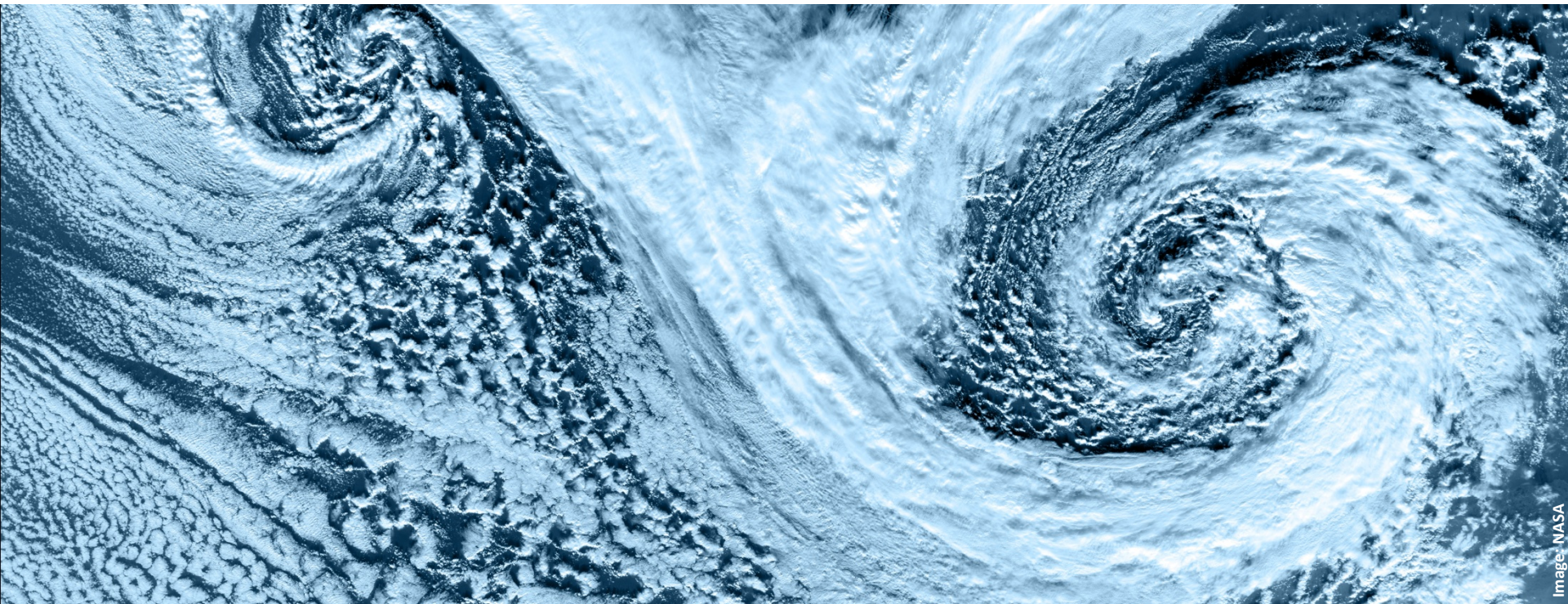
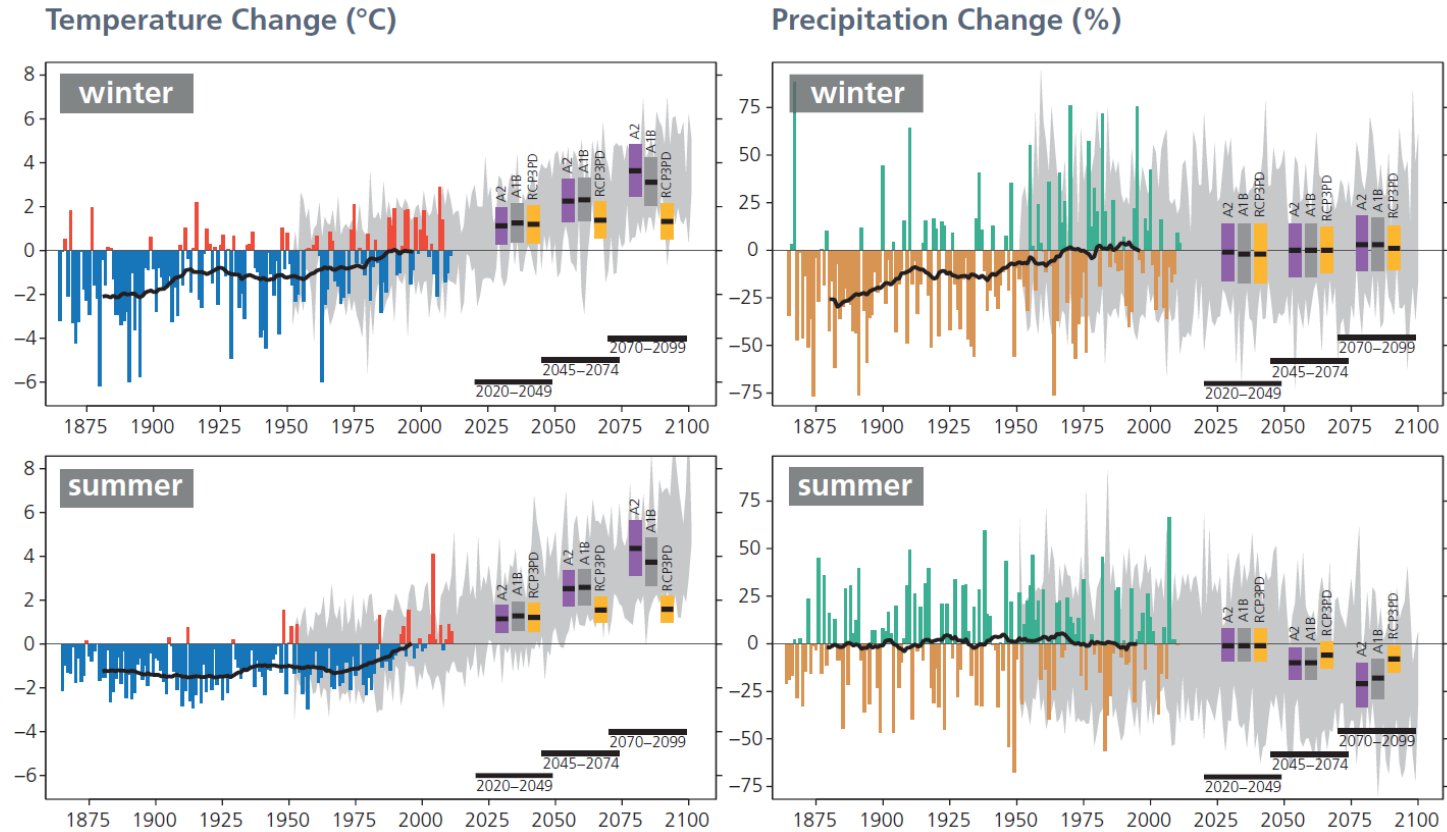


# Regional Climate Modeling

Anne Roches, [anne.roches@env.ethz.ch](mailto:anne.roches@env.ethz.ch)



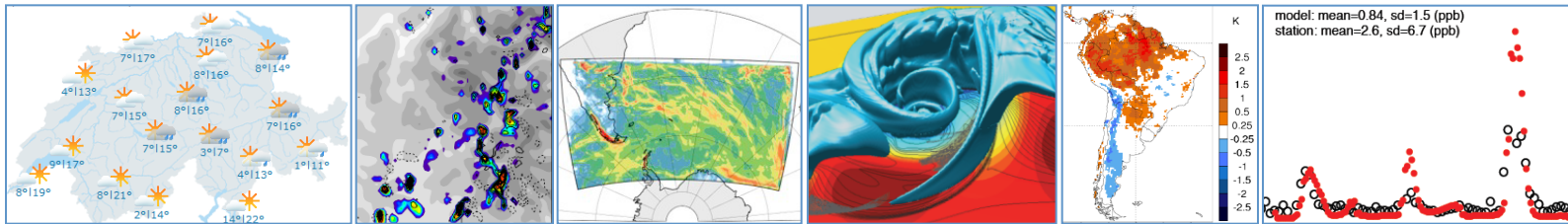
# Regional Climate Modeling



© CH2011 published by C2SM, MeteoSwiss, ETH, NCCR Climate and Occc

# Regional Climate Modeling @ C2SM

- A community (70 scientists)
- Several realities expressed in different realizations



© MeteoSwiss

© W. Langhans, ETH © D. Byrne, ETH

© S. Schemm, ETH

© Q. Lejeune, ETH

© C. Knote, EMPA

- Common modeling system components, computing platforms and challenges
- Central role of the COSMO-CLM model

# Regional Climate Modeling @ C2SM

- Each alpinist climbs his/her own peak
- Using (partly) the same material
- How can we help?



© <http://www.alexandrebuisse.org/>

## C2SM's staff involvement

- Software effort
  - “Product engineering”
  - “Store and rental”
  - “Ranger”
  - “Alpine school”
- Code management
- Regulations enforcement
- Workshops/training

## C2SM's staff involvement

- Software effort
  - “Product engineering”
- Code management
  - “Store and rental”
- Regulations enforcement
  - “Ranger”
- Workshops/training
  - “Alpine school”

## C2SM's staff involvement

- Software effort
  - “Product engineering”
  - “Store and rental”
  - “Ranger”
  - “Alpine school”
- Code management
- Regulations enforcement
- Workshops/training
- Project support
  - “Expedition backup”
  - “Tour guiding”
  - “Rescue service”
- Advice for first/special steps
- Punctual help

## C2SM's staff involvement

- Software effort
    - “Product engineering”
  - Code management
    - “Store and rental”
  - Regulations enforcement
    - “Ranger”
  - Workshops/training
    - “Alpine school”
- Project support
    - “Expedition backup”
  - Advice for first/special steps
    - “Tour guiding”
  - Punctual help
    - “Rescue service”



## C2SM's staff involvement

- Software effort
    - “Product engineering”
  - Code management
    - “Store and rental”
  - Regulations enforcement
    - “Ranger”
  - Workshops/training
    - “Alpine school”
- 
- Project support
    - “Expedition backup”
  - Advice for first/special steps
    - “Tour guiding”
  - Punctual help
    - “Rescue service”

# C2SM's staff involvement

- Software effort
  - “Product engineering”
- Code management
  - “Store and rental”
- Regulations enforcement
  - “Ranger”
- Workshops/training
  - “Alpine school”
- Project support
  - “Expedition backup”
- Advice for first/special steps
  - “Tour guiding”
- Punctual help
  - “Rescue service”

# Software effort: Tracer module in COSMO-CLM

- Easy introduction of new (prognostic) variables
- Code more readable and less error prone
- Large potential user community
- Part of the next official COSMO-CLM release
- Opens the door for new scientific work



© <http://www.achat-saintmarcellin.com>

## C2SM's staff involvement

- Software effort
  - “Product engineering”
- Code management
  - “Store and rental”
- Regulations enforcement
  - “Ranger”
- Workshops/training
  - “Alpine school”
- Project support
  - “Expedition backup”
- Advice for first/special steps
  - “Tour guiding”
- Punctual help
  - “Rescue service”

# Code management: SVN for COSMO

- System for the management of several codes:
  - COSMO-CLM model
  - Extpar, Int2Im, FieldExtra
  - Flexpart, Lagranto, ...
  - Some “utility tools”
- Preparation of code versions ready to use at CSCS
- “Diary” or “log” of your work

## C2SM's staff involvement

- Software effort
  - “Product engineering”
- Code management
  - “Store and rental”
- Regulations enforcement
  - “Ranger”
- Workshops/training
  - “Alpine school”
  
- Project support
  - “Expedition backup”
- Advice for first/special steps
  - “Tour guiding”
- Punctual help
  - “Rescue service”

# Workshops/trainings

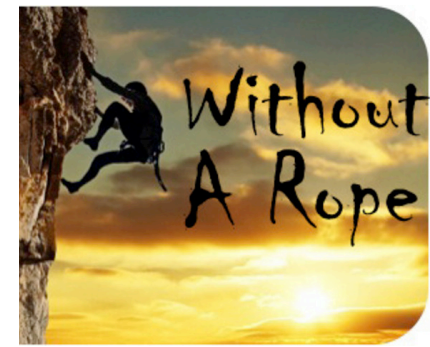
- Annual COSMO User Workshop
- SVN sessions
- In prep.: Technical Clinics
  - First edition: “Good practices in code development”



© fr.fotolia.com



© fr.fotolia.com



© <http://www.kickstarter.com>

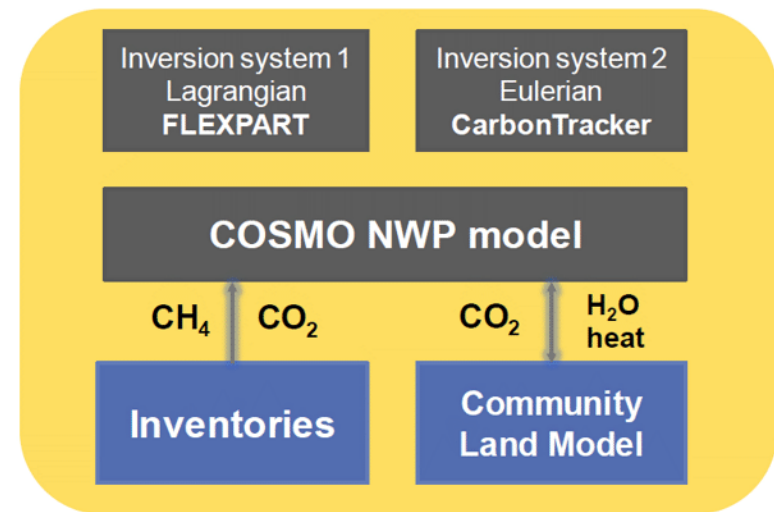
## C2SM's staff involvement

- Software effort
    - “Product engineering”
    - “Store and rental”
    - “Ranger”
    - “Alpine school”
  - Code management
  - Regulations enforcement
  - Workshops/training
- 
- Project support
    - “Expedition backup”
    - “Tour guiding”
    - “Rescue service”
  - Advice for first/special steps
  - Punctual help
- 



# Project support: CarboCount

- Modeling of CO<sub>2</sub> contributions
- Making use of the tracer module
- Support:
  - Application of the module
  - Further developments
  - Setup of other tools
  - Computing resources
  - Organizational tasks



© D. Brunner

# You need help? You have ideas?

- Software effort
  - Contact the RCM WG
  - Use & contribute
  - Give them a try
  - Use & contribute
- Code management
- Regulations enforcement
- Workshops/training
  
- Project support
  - Contact the RCM WG
- Advice for first/special steps
  - Ask for a tour
  - Shout for help
- Punctual help

[anne.roches@env.ethz.ch](mailto:anne.roches@env.ethz.ch), CHN M15.1, 044 632 79 75



# Let's climb peaks together!

