

# Bridging the gap between Places and Sites in Carbon Capture and Storage

Juanita v. Rothkirch, Olivier Ejderyan and Michael Stauffacher

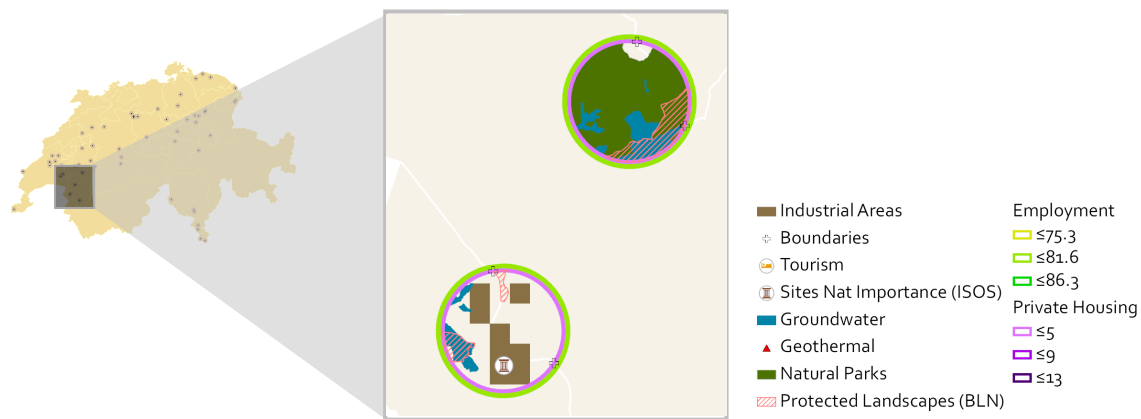
- **Opposition from communities** has led to the cancellation of CCS projects in Poland, UK, Germany, the Netherlands and the US
- Several cases show a **mismatch** between the proposed project and the local characteristics and concerns
- While experts focus on technical characteristics of sites, **local characteristics and concerns** are often overlooked in site screening processes

Which characteristics of local contexts have been relevant in cases of support or opposition to CCS projects around the world?

→ Literature review of characteristics of projects and places which mattered for the acceptance of projects

Can maps of local contexts' characteristics support the site selection process?

→ GIS mapping of the factors identified previously, using Switzerland as an example



- Characteristics such as **familiarity with risks, experiences and expectations** have contributed to the support or opposition of projects around the world
- Maps and lists of non-visualizable factors can serve as an iterative **platform for discussion** around the alignment of projects and locations
- Due to the complexity of local contexts and the dynamicity of processes, **interaction with local stakeholders** is key in siting processes