

Creating a Service in ArcMap for ArcGIS Online for the Example „Urban Gardening“

(based on ArcMap version 10.2 of Esri)

This document explains,

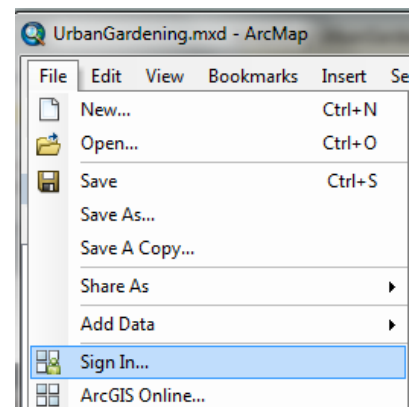
- how the connection between ArcMap and ArcGIS Online is made,
- how a feature service is constructed and
- which steps and settings are necessary in ArcGIS Online to create the map and make it public.

In order to carry out these steps, you require an ArcGIS for Desktop licence and an ArcGIS Online subscription. If you do not have an ArcGIS Online licence, you can use the 60-day trial version:

<http://www.esri.com/software/arcgis/arcgisonline/evaluate>

1. Connecting ArcMap and ArcGIS Online

At first, it is necessary to connect with ArcGIS Online in the menu under **File > Sign In ...**.

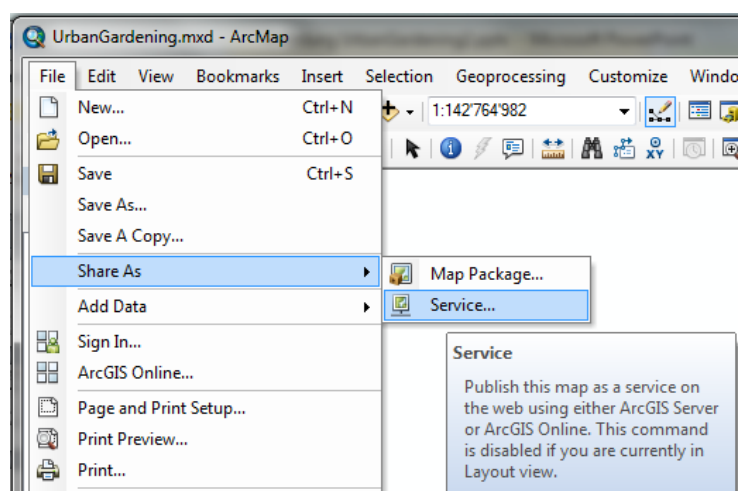


2. Creating Feature Service in ArcMap

In a second step, the dataset is provided as a service in ArcGIS Online.

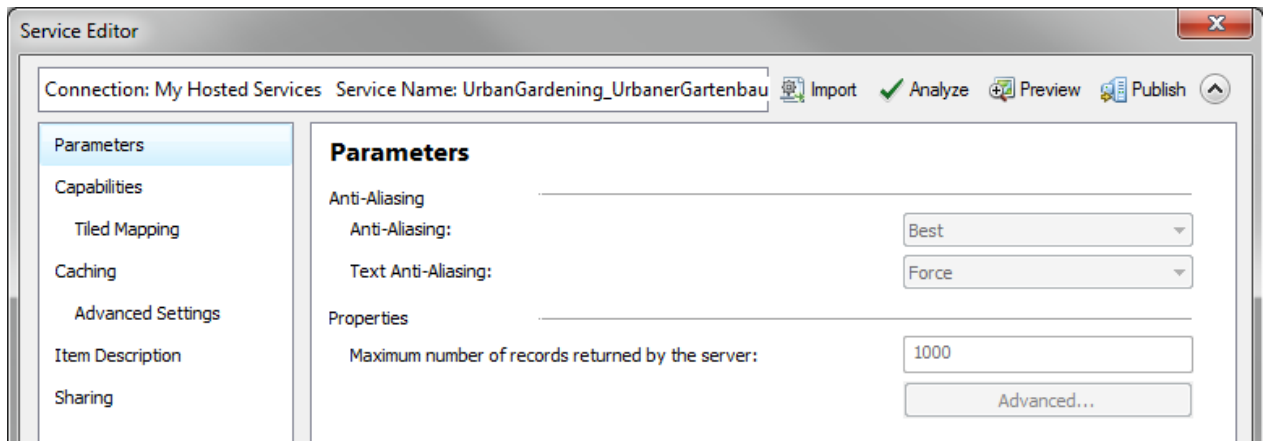
This is possible in the menu via **File > Share As > Service ...**

The **Share as Service** window opens. Choose **Publish a service** and click on **Next >**

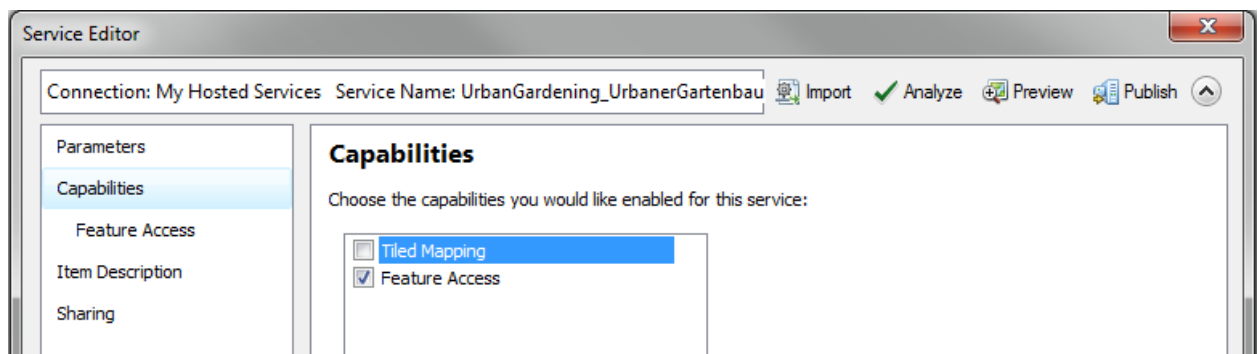


A further window opens in which the connection and the service name have to be entered. Choose your ArcGIS Online connection here and enter a **service name**, e.g. urban gardening.

Click on **Continue ...**. The window **Service Editor** opens under which you can choose the different service parameters:

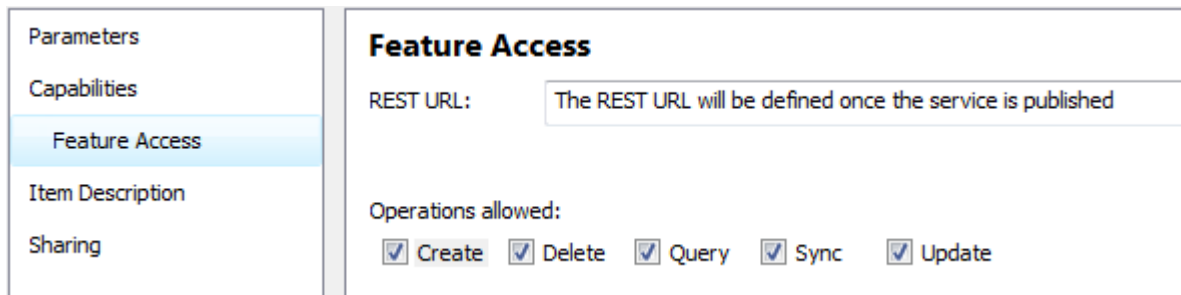


Click on **Capabilities** and choose **Feature Access**. Subsequently, deactivate **Tiled Mapping**!

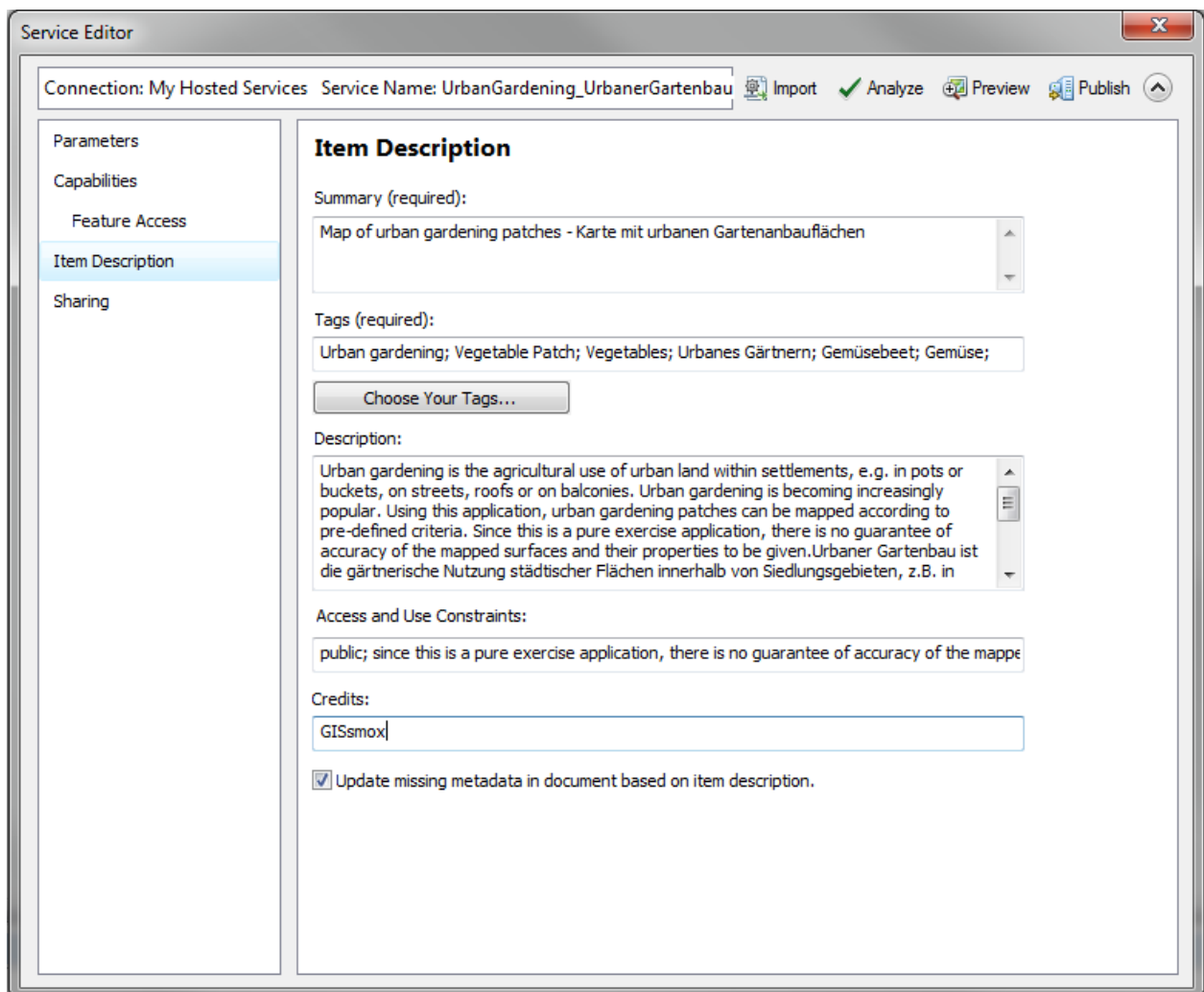


Under **Capabilities** a new entry appears: **Feature Access**

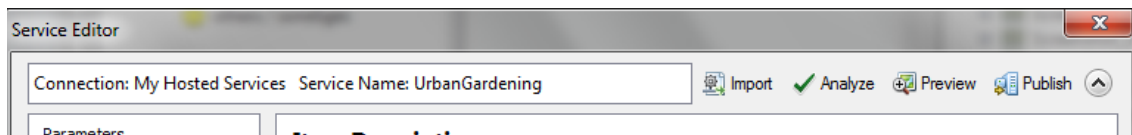
Click on this. For the example “urban gardening” all operations were allowed by activating them.



Next, the metadata (**Item Description**) for this service is added (see image below). Enter your own information here.



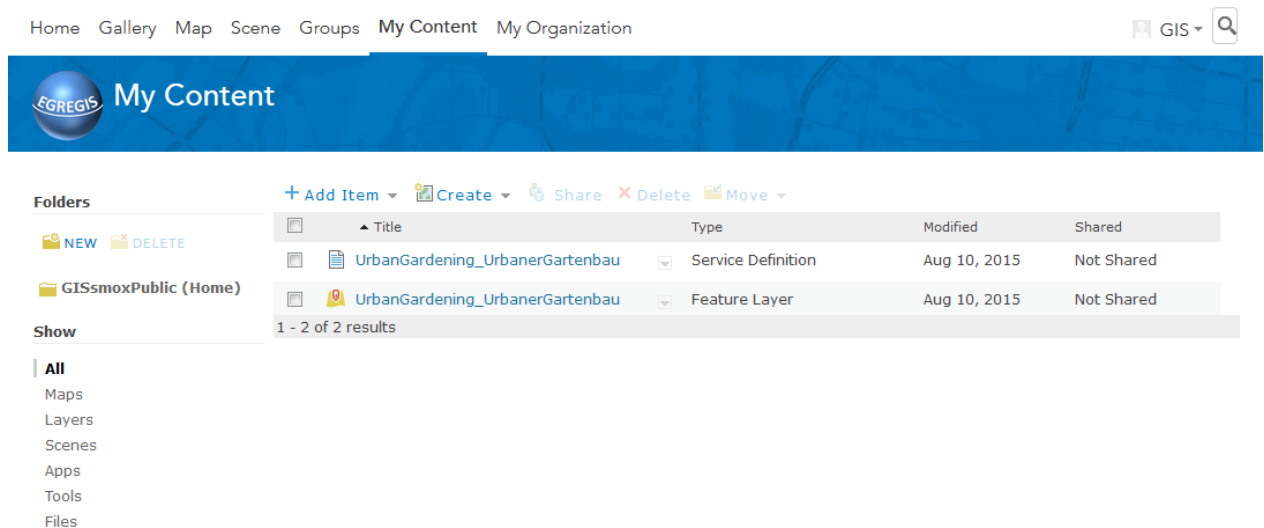
With the help of the **Analyze** tool the service can be checked for errors.



The so-called **Prepare** window opens, which may show error messages, hints or messages. Read these and, if necessary, carry out corrections.

With the tool **Publish** the service is published on ArcGIS Online. This step may take a few minutes. You can see an image of the published service in ArcGIS Online below. It consists of two files:

1. the published dataset = **Feature Layer** and
2. the **Service Definition**



To view this, you have to log on to your **ArcGIS Online account** and go to **My Content**.

3. Settings in ArcGIS Online

For the following steps, you need to be logged in with your ArcGIS Online subscription.

For the example “urban gardening” further settings have to be adapted, because it should be possible to

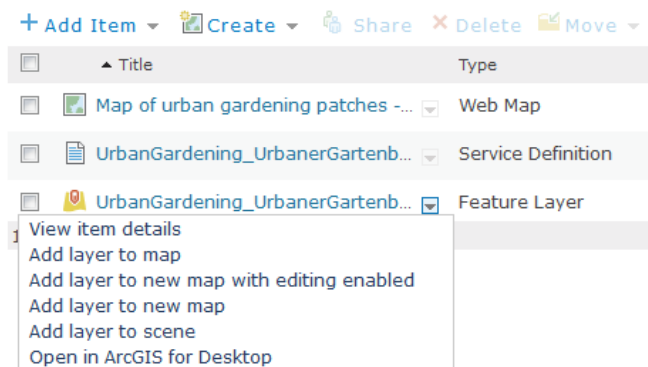
- attach a photo to the recorded object and
- the dataset should be publicly available.

In addition, the datasets should be integrated into a map which should be publicly available.

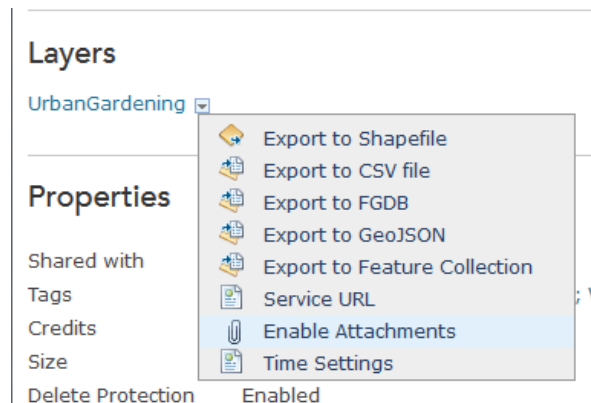
Initially, however, the metadata of the created feature layer *Urban Gardening* are tested.

Go to **My Content**.

The metadata of a published feature layer can be inspected under **View item details**. These can be opened with the dropdown menu on the right side of the feature layer.



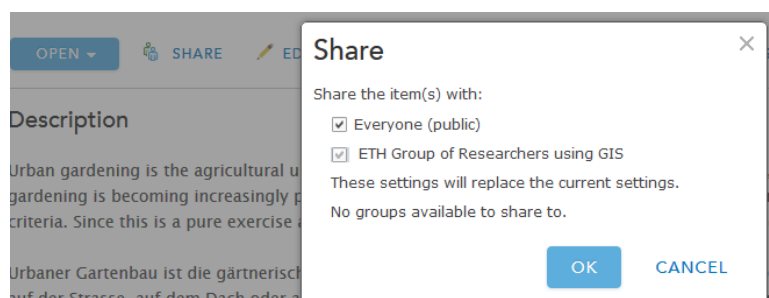
You can activate attachments under **Layers > Urban Gardening** with **Enable Attachments**. Now, photos of garden horticulture areas, for example, can be attached to the recorded object.



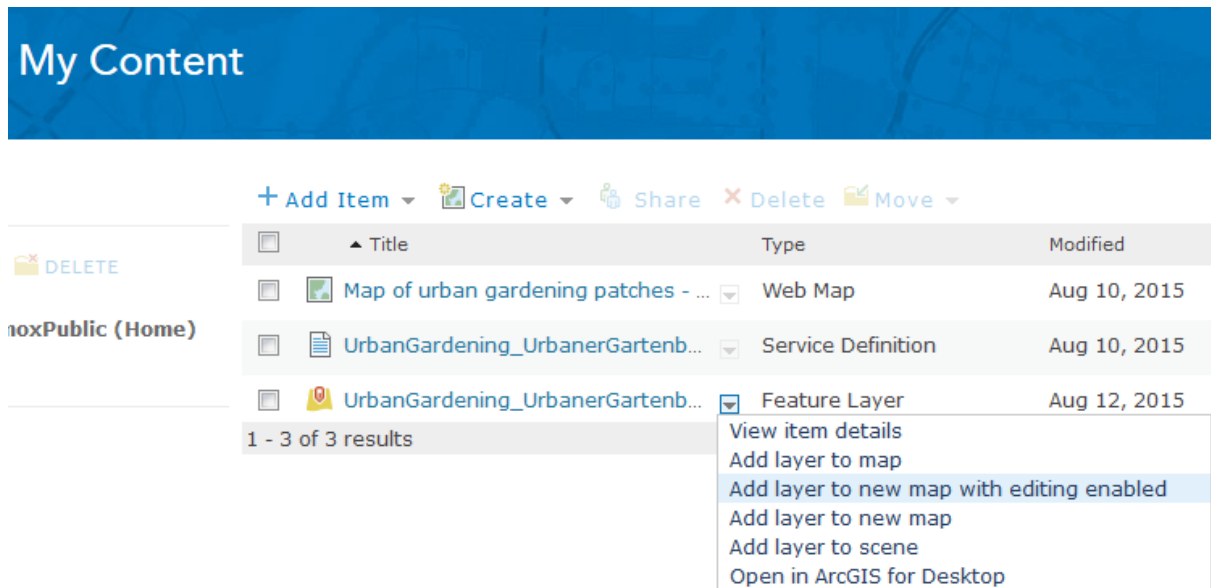
A feature layer can also be made publicly available under **View Item Details**.

Click on **SHARE** and select **Everyone (public)**.

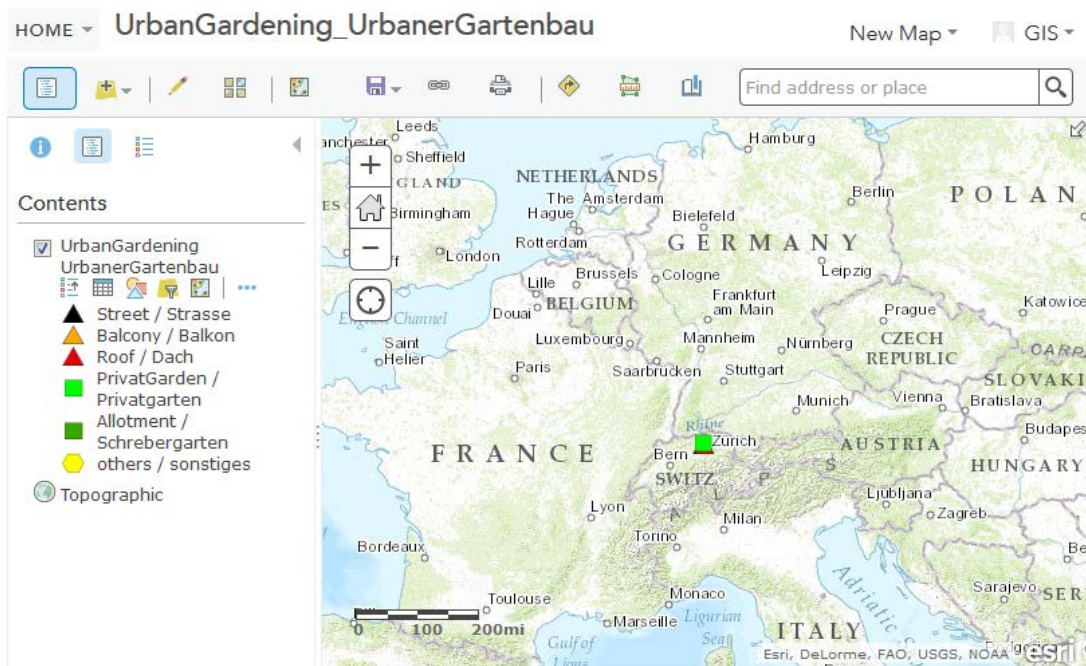
Click on **OK** and go back to **My Content**.



After that, the feature layer should be integrated into an editable map. For this, use the dropdown menu next to the feature layer again and choose **Add layer to new map with editing enabled**.



A map with the dataset and a topographical basemap of Esri opens up as can be seen in the image below.



Control if the symbology is correct and save your map.

Finally, the map is saved and – as with the feature layer – made available publicly.

In the map view, click on the symbol for **Share**.

Select the setting **Everyone (public)**. The URL is created automatically and can be forwarded to interested persons, respectively, found in the internet.

Share

Choose who can view this map.

Your map is currently shared with these people.

- Everyone (public)
- ETH Group of Researchers using GIS

Link to this map

 Facebook

- Share current map extent

Embed this map

EMBED IN WEBSITE

CREATE A WEB APP