

ArcGIS for Developers

EGREGIS-Meeting - 05.02.2018

Markus Schlager
m.schlager@esri.ch
+41 58 267 19 38

ArcGIS – A Platform for Developers



Automate ArcGIS



Extend ArcGIS



Create Apps

Automate ArcGIS

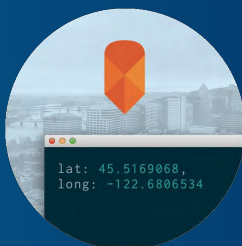
ArcPy

- Python 2.x (ArcGIS Desktop | Server)
- Python 3.x (ArcGIS Pro)
-
- Data Conversion | Data Management
-
- Geographic Data Analysis
-
- Map Making and Automation
-
- Build ArcMap AddIns



ArcGIS API for Python

- Python 3.x (ArcGIS Online | Portal)
-
- Data Conversion | Data Management
-
- Geographic Data Analysis
-
- Map Making and Automation
-
- Managing/Administering ArcGIS Online | Portal



Extend ArcGIS | Build Apps

Building Apps Client APIs



Portal | ArcGIS Online

Extending ArcGIS Server and Desktop APIs



- C++
- Java
- Android
- Qt
- QML
- HTML5
- Python
- C#
- .NET
- REST
- Swift
- JavaScript
- Objective-C



Extend ArcMap

ArcObjects
.NET | Java

ArcMap Add-Ins (Tools | Buttons | Menus | ...)

Custom Renderers | GP Tools | GDB Class Extensions

Plug-in data sources

Stand-alone ArcGIS Engine application



Extend ArcGIS Pro

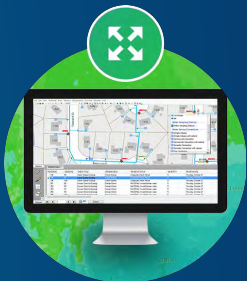
ArcGIS Pro SDK .NET

ArcGIS Pro Add-Ins (Tools | Buttons | Menus | ...)

ArcGIS Pro Configurations (Completely Custom UI Experience)

Access to Core- and Extension-Libraries

Stand-alone WPF-applications



Extend ArcGIS Server

ArcObjects
.NET | Java

Server Object Extensions (SOE)
Add Custom Functionality to ArcGIS Server

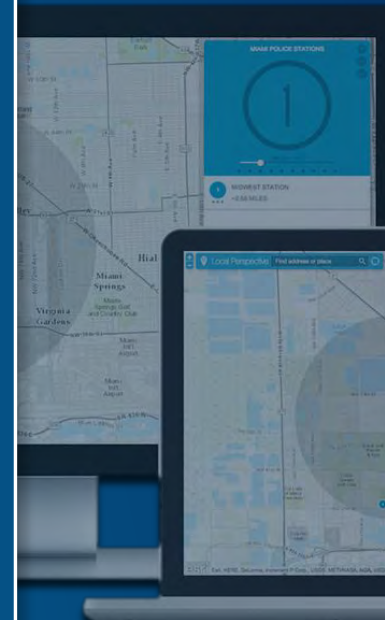
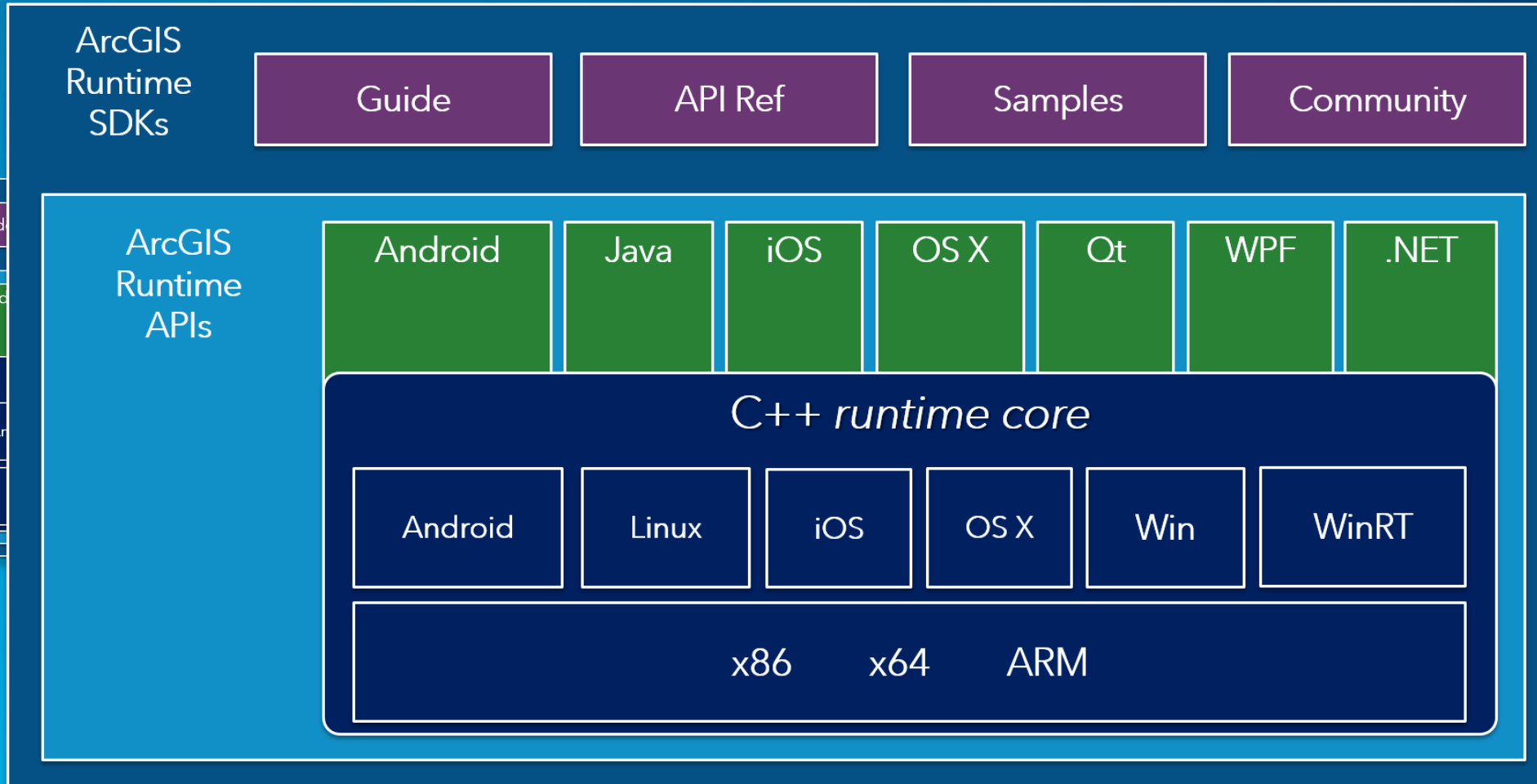
Exposed Through a REST-Interface

Server Object Interceptor (SOI)
Change the Behavior of Existing Service Operations

Encapsulate Existing Service-Interfaces



Build Apps - Runtime SDKs



Build Apps – ArcGIS API for JavaScript



Manipulate Imagery



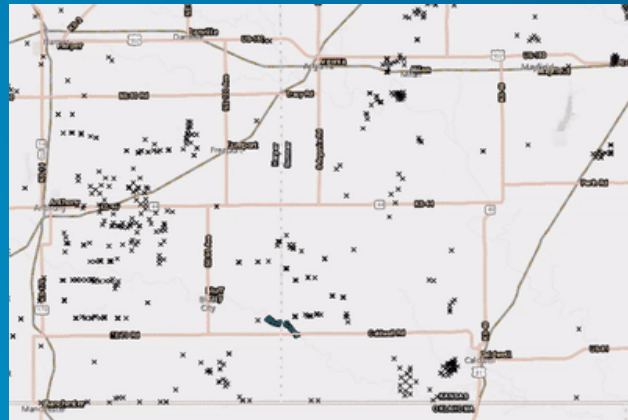
Integrate Basemaps



Full 3D Applications



Create Realistic Scenes



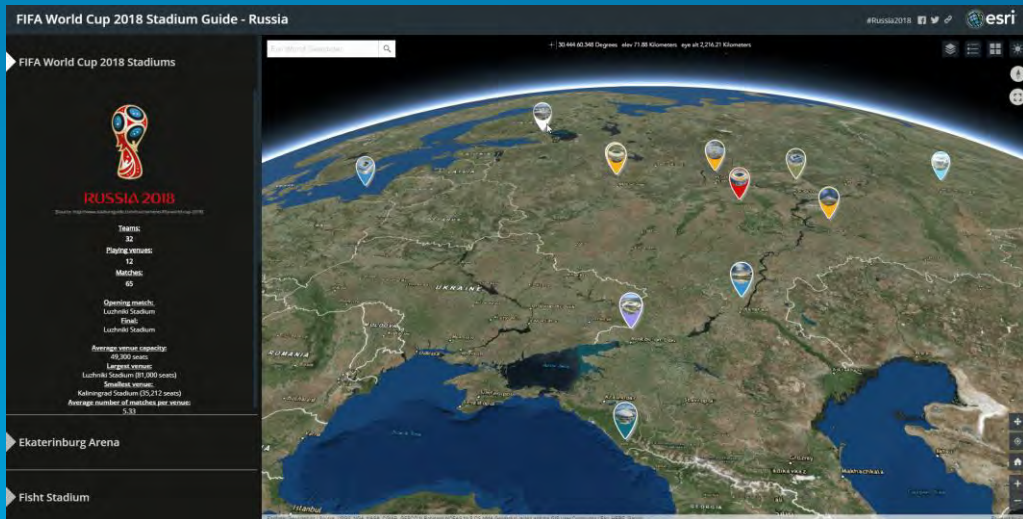
Work with Subsurface Data



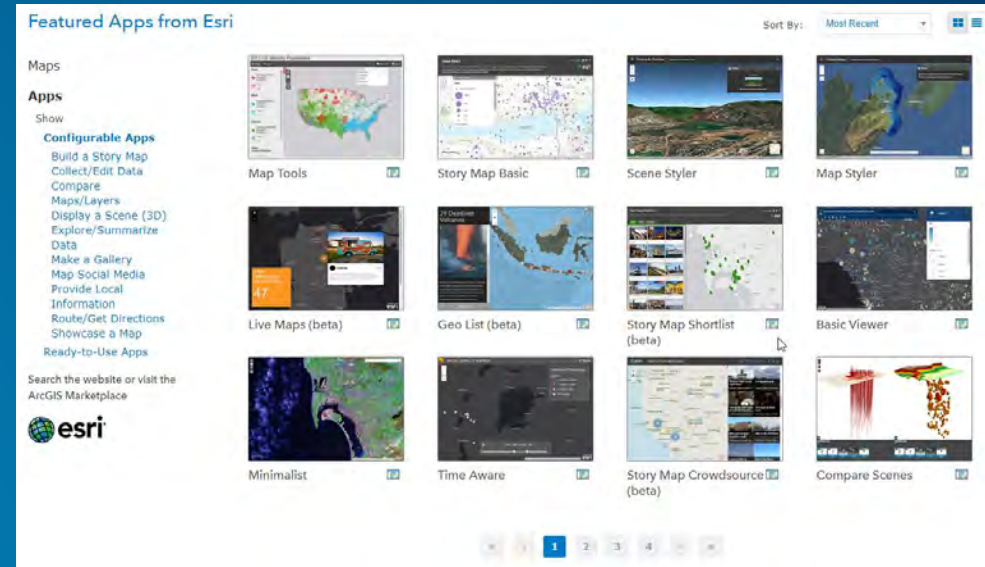
Perform Analysis



Build Apps – Configurable Apps



Story Maps

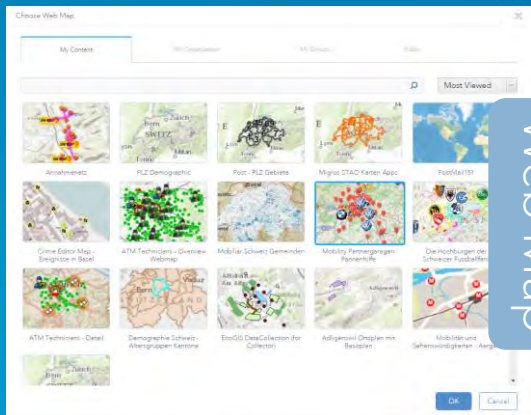


Featured Apps Gallery

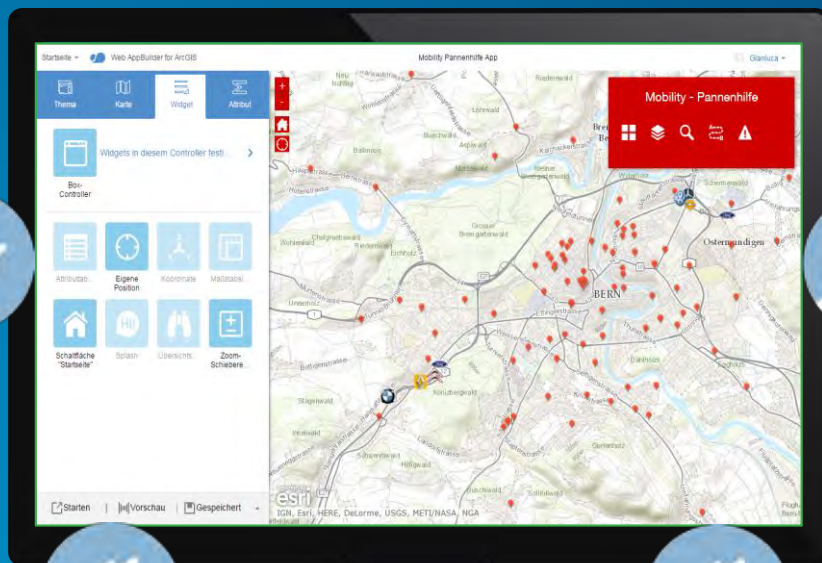
Redeployable | Customizable
JavaScript-Code



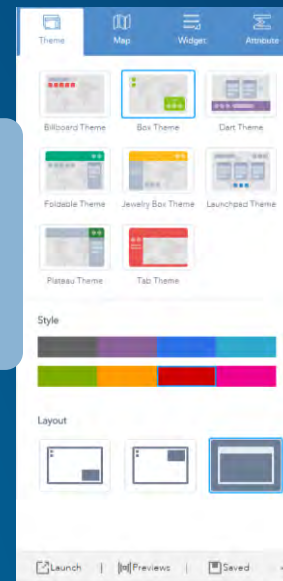
Build Apps – WebApp Builder for ArcGIS



Web Map



Theme



Builder

Widgets



Build Apps – AppStudio for ArcGIS



QML | JavaScript + JSON + CSS

Qt Creator

AppStudio Cloud Make



Symphony of ArcGIS Apps



Links

General

<https://developers.arcgis.com>

<https://doc.arcgis.com>

<https://www.esri.com/training>

<http://proceedings.esri.com>

Code

<https://codesharing.arcgis.com>

<https://github.com/Esri> (z.B. <https://github.com/Esri/esri-leaflet>)

App Builders | App Templates

<https://storymaps.arcgis.com>

<https://appstudio.arcgis.com>

<https://www.arcgis.com/home/gallery.html>

<https://developers.arcgis.com/web-appbuilder>



The background of the slide features an aerial photograph of Berlin, Germany, with the prominent TV Tower (Fernsehturm) on the left. The image is overlaid with a semi-transparent green and yellow map of Europe, with Germany highlighted in a bright yellow color. The overall aesthetic is modern and tech-oriented.

2018

Esri Developer Summit Europe

October 23-25 | bcc Berlin Congress Center, Germany

ArcGIS for Developers

EGREGIS-Meeting - 05.02.2018

Fragen?



ArcGIS for Developers

EGREGIS-Meeting - 05.02.2018

Markus Schlager

m.schlager@esri.ch

+41 58 267 19 38

